

THE EAGLE EYE



The Eagle and Swinethorpe Parish Trig Point is now reinstated in its towering position on the “peak” of Slacks Hill, following many years being laid on its side.

More about trig points on page 18!

The next issue of the Eagle Eye will appear at the beginning of December
Please send in your contributions before the copy deadline - **Friday Nov 19th**

Seasonal Flu Vaccination Campaign 2021

We will be holding 2 Saturday morning flu clinics on

Saturday 18 September 2021, from 8.00 am – 12.30 pm
Saturday 23 October 2021, from 8.00 am – 12.30 pm

We are aiming to vaccinate 100% of eligible patients this year, as defined by NHS guidelines. We may be able to open our offer beyond those eligible after 31 October 2021 (dependent on stocks/uptake).

Saturday clinics will focus on patients who are able to walk and stand unaided for up to 20 minutes. No seating available. Flu Vaccinations (and possibly 3rd COVID vaccine once details are confirmed) will be administered with patients stood up and a strict one-way system through the Practice will be in operation. We will continue to wear face coverings to protect your healthcare setting.

For patients with mobility issues we will be holding weekday flu clinics. Our PCAs will triage at the time of booking.

Housebound patients will be contacted by the practice in due course.

These are appointment only clinics. Appointments will be available to book from 1 September 2021. Please contact the number below, book online or ask at Reception.

For Appointments telephone: 01636 892156 8.00am – 6.15pm

Website: www.collinghammedicalcentre.co.uk

E-Mail: collingham.medicalcentre@nhs.net

PRESCRIPTION ROTA

October 6th	Mari Dawson	868310
October 13th	Rodney Fagg	869123
October 20th	Lynda Williams	869225
October 27th	Mari Dawson	868310
November 3rd	Clare Kelly	07847 966803
November 10th	Betty Spackman	869676
November 17th	Clare Kelly	07847 966803
November 24th	Betty Spackman	869676
December 1st	Lynda Williams	869225
December 8th	Rodney Fagg	869123

WHAT'S ON DIARY

October		
Tuesdays	Coffee Stop in Church	10—12
Thursdays	Baby and Toddler group	9:30—11:00
Friday 8th	Cash Bingo, Village Hall	8:-00pm
Monday 15th	PCC meeting in vestry	10:00 am
Tuesday 19th	Bag2School	By 8:30am
Tuesday 26th	Parish Council meeting, VH	7:30pm
November		
Tuesdays	Coffee Stop in Church	10-12
Thursdays	Baby and Toddler Group	9:30 –11:00
Sunday 3rd	Remembrance service for loved ones	7:00pm
Tuesday 9th	VPA AGM in Village Hall	7:00pm
Tuesday 30th	Parish Council meeting VH	7:30pm
December		
Sat 11th	OAP Christmas dinner	

MOBILE LIBRARY DATES

Outside Eagle Post Office

October—Tuesday 12th 15:15—16:30

November - Tuesday 9th 5:15—16:30

For more info go to https://capitadiscovery.co.uk/lincolnshire/assets/-/docs/mobile_timetables/E.pdf

EDITOR'S NOTE

Advance warning—minor rant below.



Eagle is a village. It is a community, a fortunate community because it has great community assets—the Village Hall, the Playing Field, the Eagle Eye, School, Toddler Group, Bowls club.....

These all need resources—people to make things happen, money for upkeep. Put simply, if something doesn't change, these assets will disappear—the Playing Field will fall into further dilapidation, the Village Hall will struggle to be kept in its current condition—and there will be no social outlets like bowls, toddlers, craft groups, events on the field.....

It's clear that people do care about the village and it being a safe and pleasant place to live—this is apparent from the concerns that are raised on facebook posts.

Please, if you have ideas and thoughts about how things can improve, go one step further and Get Involved. Below are opportunities to become part of this erstwhile-vibrant and happy village (in no particular order). Let's have a post-Covid reset and get going again.

Village Produce Association—contact Clare Evans (p9)

Community School Governor—contact faye.dick@eagle.lincs.sch.uk (p15)

Friends of Eagle School helpers—contact foeseagle@gmail.com (p16)

Parish Councillors x2—contact parishclerk@eaglevillage.co.uk (p26)

Playing Field Kitchen upgrade—contact parishclerk@eaglevillage.co.uk (p26)

Eagle Eye Editor—contact janewallis41@btinternet.com

Eagle Bowls Club players—contact Ted 01522 704340

Village Hall Committee members—contact Simon on 869490

Thank you for reading—now Just Do It!!



Jane

All Saints Church, Eagle

Services for October

Friday 1 st	Harvest Service	6.30p.m.
Thursday 7 th	Holy Communion	10.00a.m.
Sunday 10 th	Morning Prayer	11.00a.m.
Sunday 17 th	Evening Prayer	6.30p.m.
Thursday 21 st	Eagle School Harvest	2.00p.m.
Sunday 24 th	Holy Communion	11.00a.m.
Sunday 31 st	Group Holy Communion at Thorpe	10.30a.m.

Services for November

Wednesday 3 rd	Remembrance Service for Loved Ones	7.00p.m.
Thursday 4 th	Holy Communion	10.00a.m.
Sunday 14 th	Remembrance Service	10.50a.m.
Sunday 21 st	Evening Prayer	4.00p.m.
Sunday 28 th	Holy Communion	11.00a.m.

Harvest – Friday October 1st

We will be accepting gifts for the Foodbank/Larder at the service, and the collection will go to the Lincolnshire Rural Stress Network.

Thursday Holy Communion – is starting again on October 7th at 10am. It will be in the Church, not the Vestry.

Evening Prayer – Starting in November the Evening Prayer Service will move to 4.00pm during the winter months.

Coffee Stop – has started again on Tuesday mornings between 10am and 12 noon.

P.C.C. Meeting – Monday, 15th November in Church at 10am.

Roddy Cordon Remembered

Roddy, who died in May, aged 103, was dedicated to Eagle Church and was always a great support to the P.C.C. She will be remembered with love and thankfulness for having known her.

For Pastoral Matters and Memorial Stones please contact the Churchwardens, Chris and Sue Stiles 869296.

Jean Roberts

Letter from Rev. Andrew Vaughan

Hello everyone

May I take this opportunity to thank those who supported the activities surrounding the Journey of Faith Sunday on September 5th. The services at each church were well supported, people were refreshed from meeting with friends and neighbours at the socials, and the sponsored run raised a good amount for each of the Churches. As the Just Giving page closed we had raised £1410, to be split between the group, and each church raised a couple of hundred directly. One of the runners has suggested we do it again next September, which I am happy to do, So for your support, thank you.

As we start to look forward, our attention begins to turn to the sad occasion of All Souls Day, when we take time to remember the departed. This year our churches are conscious that for so many there is special need to mark this service, as so many had to mourn the passing of loved ones in strange ways, due to the Covid-19 pandemic. We will be writing to as many people who have lost loved ones to attend services in each church. However, if with the closure of the office we have not properly recorded details, please feel free to attend. At the service we will remember by name each person, we are asked to, there will be any opportunity to light a candle in their memory, and take home a memory pebble.

The services will be as follows:

2nd November

19.00 North Scarle

19.00 Swinderby

3rd November

19.00 Eagle

19.00 Thorpe on the Hill.

You will also see the details of our Harvest Services, we will be making a donation to Lincolnshire Rural Stress Network (LRSN), and if people bring non perishable food we will donate that to the Foodbank.

Next month we will also be confirming details of our Remembrance Sunday services.

As things start to open up let us work together to keep each other safe, but start to mix again.

As ever, Andrew

CASH

BINGO

EAGLE VILLAGE HALL

Friday 8 October

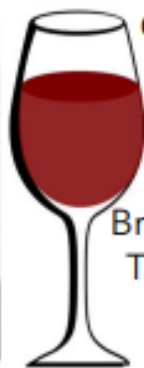
Eyes down for 8pm

Prizes for One Line
& Full House

Tickets £10 per book
Or £5 for Half a book

Raffle

Bring your own refreshments
Tea and Biscuits provided



Collingham Patient Participation Group (September)

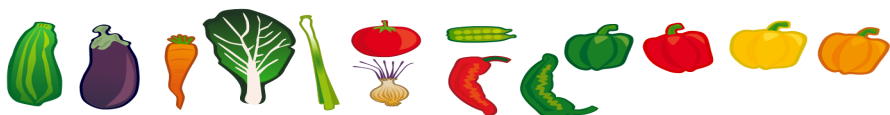
Just a brief note from the Patient Participation Group (PPG) working with Collingham Medical Centre (CMC)

Flu vaccination clinics are scheduled to take place on Saturday 18th September and Saturday 23rd October. Like last year, in order to operate in a Covid safe way you will need to be able to stand for 15 mins as you wait, no seating will be available. If you are unable to stand for 15 mins please ring the Medical Centre on 01636 892156 for an alternative appointment. Members of the PPG will be on hand to assist at these clinics. It is good news that there is no delay in the first round of vaccinations as CMC have secured their supply in good time. Please wear a mask to attend appointments at CMC.

CMC have welcomed two new GPs, Dr Edda Schuerch and Dr Kate Rees, to work alongside Drs Suresh, Li, Walker, Coulton and Fearn. Evie Hall has also joined the team as Patient Care Advisor.

A public virtual meeting about vaccinations was held on 14th September by CMC.

Members of the PPG look forward to meeting in the old library on 4th October.



Eagle Village Produce Association

A big thank you to everyone who supported the 60th Open Show on the 11th September; we had a great turn out with lots of entries (220 overall) across most of the classes, especially the floral art, which is fantastic.

Cup winners are

The WB Lincoln Cup (vegetable & fruit) – Philip Mulligan,

Sturges Cup (flowers), Birkett Cup (roses) – Margaret Andrews,

Clark Cup (floral art) – Margaret Andrews,

Ladies Cup (home produce) – Sarah Gilkes,

Handicraft Cup (craft) – Stuart Hayes,

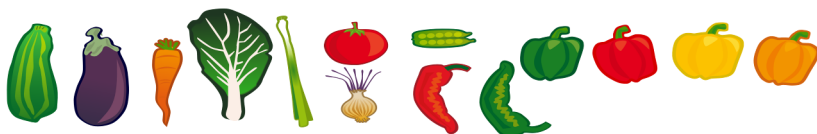
Watson Cup (men & beginners) – Chris Styles/Stuart Hayes

Margaret Duckenfield Memorial Award went to Deborah Law.

Our Annual General Meeting is on Tuesday 9th November in Eagle Village Hall at 7pm, so please come along and volunteer be part of our small and friendly committee.

Clare Evans (Treasurer) 07825 160985

Clare.3vans@hotmail.co.uk



EAGLE EYES PAINTING AND DECORATING SERVICES

Female painter and decorator.

All aspects of inside painting and decorating
undertaken.

Also outside - including fence panels, sheds,
garage doors etc.

Competitive prices.

Over 25 years experience.

For more information and a free quotation
please contact - Vicky Aldous 07799467189

Telephone
Lincoln 01522 / 684825
Mobile 07850 / 418744

35 Station Road
Thorpe On The Hill
Lincoln
LN6 9BS

CHRIS MARTIN

*Painter & Decorator
Builder*

*Specializing in all aspects of building work to properties, including kitchen &
bathroom fitting, wall & floor tiling, plumbing, joinery, plastering,
laminated wood floor laying & much, much more.*

No job too small, so call now for a free quote & friendly expert advice

HOME IMPROVEMENTS

PROPERTY REPAIRS

Ian Sheldon Plumbing Services

Oil Fired Boiler
Installation, Maintenance & Repairs

07970 064703

imsheldon36@aol.com



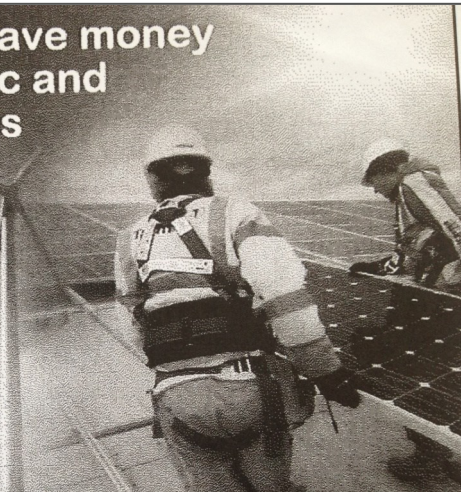
Registered
Business

Boiler Installation/Repair
Full Bathroom Installation
General Plumbing Maintenance

Make electricity and save money with Solar Photovoltaic and Solar Thermal Systems

- PV and Solar Thermal Installer
- Full Design & Installation
- Domestic and Commercial
- PV Solar Panels
- Wind Power Specialists
- All Electrical Work Undertaken

We will talk you through the procedure
and work out examples of potential savings
on your household energy bills.



EAGLE ELECTRICAL



is an approved MCS Solar PV installer

Call for a FREE quote today:

01522 868072

07966 436944

www.eagleelectrical.co.uk



- ✦ TRADITIONAL BRUSH AND VACUUM SERVICE
- ✦ SWEEPING CERTIFICATES ISSUED
- ✦ NESTS REMOVED
- ✦ PROFESSIONAL, CLEAN SERVICE
- ✦ CAGES, CAPS AND COWLS FITTED
- ✦ FULLY INSURED
- ✦ POLICE CHECKED

01636 616425

wilkinschimneysweep.co.uk/newark 

Taylor Tree Services

Gary Taylor
N.D.A

All aspects of tree and hedge work
Undertaken
NPTC Qualified

Fully Insured

Domestic and Commercial

24 Fosse Lane
Thorpe On The Hill
Lincoln LN6 9BE

Mobile: 07845720099
tel: 01522 685690
gary.taylor.10@gmail.com



PETE COWAN

DpT ADI / Fleet
Driver Trainer

RoSPA Diploma in
Advanced Driving
Instruction

www.a1drivertraining.co.uk



Beginners,
Theory, Advanced,
Defensive & Corporate
Training

Tel: (01522) 778266
Mob: 07885 106284

Chestnut House, Wigsley Road,
North Scarle, Lincoln. LN6 9HD
e-mail: pete@a1drivertraining.co.uk



The Boiler Man

shhh...
save it!



**Have your
boiler regularly
serviced and
save money**

**Evening Tel: 01 522 789840
Mobile Tel: 07946 11 4955**

Mark Wood Heating Ltd.

Oil Boiler Specialist

Servicing - Installation - Repairs

OFTEC REGISTERED

Full Central Heating Systems

Boiler Replacements

System Additions & Upgrades

Radiators - Pumps - Controls

Unvented Hot Water Systems

Power Flushing.

01427 628004 / 07703 217875



Our new school term

We have been treated with some glorious weather to begin our school year and it seems only right that the sun has shone for us as our school is now the most normal it has been for what seems like an age. Visiting the classrooms has been an absolute pleasure as everyone has been so happy, focused and calm - just perfect. Our first Whole School Assembly in over 18 months was a treat and so nice to have everyone in the same room smiling and sharing school.



We'd like to welcome Tommy, Lachlan, Tommie and Willow to Little Eagles; Alex, Jack, Evie, Henry, Hugo, Primrose, Max, Ernie, Toby, Jaylen, Malachi, Charley, Bertie and Fynnley into our Reception Class; George and Mr Holmes to Class 3 and Miss Arnold in Class 2. They have all settled brilliantly and we look forward to sharing their school journey with them.



Governors

We are currently looking for a new Community Governor to join our friendly Governing Body and would be delighted to hear from anyone from the local community who would be interested in

taking on this rewarding role.

You will join a team of experienced Governors who share a common interest in wanting the best possible education for the children in our village school community.

If you are interested please contact our Clerk to the Governing Body (faye.dick@eagle.lincs.sch.uk) by Monday 1st November.

Bins, bins and more bins!



Just as you will be working out quite where to put the vast array of wheelie bins we now have, we at school are doing exactly the same. Although we have had to have a bin audit which involved our rubbish being reviewed to

make sure that we are sorting everything properly as otherwise we will be fined. Unfortunately, over the summer our large wheelie bins had been used for rubbish that we couldn't account for; thankfully on this occasion we were given grace. A polite request therefore, to please not use our bins during the holidays when they are typically empty. Thank you

Handyman

We often have small jobs that need doing around school; typically too small for our normal contractors and quick jobs that they struggle to schedule. So we got thinking and wondered if there is anyone local who is able to turn their hand to d.i.y.-type jobs for which they could invoice for payment that wouldn't mind leaving us with their contact details to call upon if something outside our skill-set cropped up. We look forward to hearing from you.



Head Teacher: Mrs H Adams BEd (Hons) QTS, NPQH

Eagle CP School, Scarle Lane, Eagle, Lincoln LN6 9EJ
T: 01522 868354 F: 01522 868354 E: enquiries@eagle.lincs.sch.uk

www.eagleprimary.org.uk



Friends of Eagle School

Eagle CP School, Scarle Lane, Eagle, Lincoln LN6 9EJ

— Helping to raise money and opportunities —



Welcome back to the new academic year! A new school year means new exciting fundraising ideas and events! This will be kick started by Bag2School on the 19th October, and we have lots of other ideas and opportunities to come, so please keep an eye on the Facebook page (Friends of Eagle School – FOES) for more details.

We have a range of preloved uniform for sale on our website, please take a look on

www.pta-events.co.uk/friendsofeagleschool

This year we have a new committee, Katie Downes remains as treasurer, Sian Hilton as chair, Kelly Smith has joined as secretary, and Leanne Crew as committee member.

We are very much on the look out for new committee members and helpers for events, so if you enjoy events planning, have ideas for fundraising to benefit the pupils of Eagle Community Primary school, or simply want to meet new people by lending an hour or so of time at a future event, please don't hesitate to message the facebook page or email us at

foeseagle@gmail.com

We look forward to seeing you all soon, and as ever, thank you for your continued support,

FOES.





Eagle Baby and Toddler Group resumed in September and we were delighted to welcome several new families and a new helper, Annalisa.

We are a weekly playgroup for children from birth to 5 with their parents, grandparents or carers. We meet every Thursday in termtime from 9.30 – 11am at Eagle Village Hall.

Nanny Sue runs a different craft activity every week, and during the first week she helped the children to make a beautiful poppy wreath, which won first prize in the children's category of the Village Produce Association's Autumn Show. Congratulations to all the children who helped!

Over the next few weeks we will be offering Autumn and Halloween activities, along with the usual toys, games and songs.

New families from Eagle and local villages are always welcome to attend, and the first session is free. Please see "Eagle Baby and Toddler Group" on Facebook for more information.

Jessica M

A bit about Trig points:



A **triangulation station**, also known as a **trigonometrical point**, and sometimes informally as a **trig**, is a fixed surveying station, used in geodetic surveying and other surveying projects in its vicinity.

It was in 1935 that Ordnance Survey, in a mapping project led by Brigadier Martin Hotine, decided to implement a new control network for Great Britain and at the same time unify the mapping from local county projections on to a single national datum, projection, and reference system. Thus, the OSGB36 datum and The National Grid were born, both of which are still with us today.

More than 6,500 trig pillars were built across the country and used for the retriangulation between April 18, 1936, and June 4, 1962, when the trig pillar at Thorney Gale, Westmorland, was used for the final calculation.

Retriangulation helped in the rewriting of the British map as we now know it. Triangulation is basically a mathematical process that makes accurate map-making possible. It works by determining the location of a point by measuring angles to it from known points at either end of a fixed baseline and, in this case, 6,500 trig pillars.

Trig pillars are mostly made of cast concrete but a few are built from local stone cemented together. A benchmark is usually set on the side, marked with the letters "O S B M" (Ordnance Survey Bench Mark) and the reference

number of the trig point. Within and below the visible trig point there are concealed reference marks whose National Grid References are precisely known.

The highest trig pillar sits on the top of Ben Nevis, the lowest trig pillar is at Little Ouse, sited at -1m.

Eagle's trig point is 35.18m or 115.4ft above sea level—the lowest point in the Parish is 8.1m or 24.5ft, except for the bottom of the quarry on Beehive Lane which is about 6.0m, and Nth Scarle is 7.1m or 23.3ft.

Modern technologies now mean that the traditional trig pillar is obsolete in its original guise. They are no longer used to help shape our maps, although they still act as a beacon for walkers and cyclists.

The modern equivalent of the trig is the OS Net network of 110 Global Navigation Satellite System (GNSS) receivers. The surveyors use OS Net and GNSS technology every day to instantly position new map details to within a few centimeters. What took many hours at Cold Ashby in 1936, can now be done in seconds and to a far greater degree of accuracy.

In Scotland, there are some pillars called Vanessas, which are taller, cylindrical concrete pillars.

Credits go to Mr Michael Chennells for the local information and photos, and to Google/Wikipedia for the rest.





BIN COLLECTION DATES 2021/22



- Please ensure your bins are out by 7.30am on collection day
- To check what can go into each bin please refer to the A-Z recycling guide (www.n-kesteven.gov.uk/recycling)

North Kesteven
DISTRICT COUNCIL

WEDNESDAY

		Black Bin		Green-Lidded Bin		Purple-Lidded Bin	
2021	September	8	September	15			
	September	22			September	29	
	October	6	October	13			
	October	20			October	27	
	November	3	November	10			
	November	17			November	24	
	December	1	December	8			
	December	15			December	22	
	December	29					
2022			January	5			
	January	12			January	19	
	January	26	February	2			
	February	9			February	16	
	February	23	March	2			
	March	9			March	16	
	March	23	March	30			

**CAN YOU SPARE A FEW HOURS A WEEK TO SUPPORT PEOPLE
DETAINED UNDER IMMIGRATION POWERS NEAR LINCOLN?**



Morton Hall Visitors' Group is looking for new volunteers who can commit to visiting people detained under immigration act powers near Lincoln on a weekly basis starting in September.

No experience is necessary as full training and supervision will be provided. We just ask that you are able to listen with empathy and offer non-judgemental emotional support and signposting.

If you believe that immigration detention is harmful and inhumane and are looking to make a positive difference to people trapped in the system, we want to hear from you.

Contact us today and become part of our friendly group of befrienders.

For more information:
Email: beth@mhdetentionvisitors.org
Tel: 07482 193120
Website: www.mortonhallvisitors.org.uk



EAGLE VILLAGE HALL 200 CLUB

JULY

<u>NUMBER</u>	<u>NAME</u>	<u>AMOUNT</u>
33	MR N BOTTOM	£100.00
87	MISS L CHENNELLS	£50.00
142	MR E COTTON	£50.00
156	MRS J JINKS	£20.00
168	MRS J CROWDER	£20.00
149	MR & MRS HAYLOCK	£20.00
82	MR R SMITH	£10.00
43	MR D PHILLIPS	£10.00
108	MRS M PROCTER	£10.00
175	MISS S LEE	£10.00

AUGUST

<u>NUMBER</u>	<u>NAME</u>	<u>AMOUNT</u>
133	MRS J WALLIS	£100.00
124	MR D CALDOW	£50.00
60	MRS C McDONNELL	£50.00
55	MRS O CLEMENTS	£20.00
153	MRS W COE	£20.00
50	MR P DUCKENFIELD	£20.00
161	MR K MOORE	£10.00
121	MRS A BOOTH	£10.00
64	MR M WATERTON	£10.00
192	MRS M ANDREWS	£10.00

Useful phone numbers, email addresses and websites

NEIGHBOURHOOD POLICING

Sgt Kenneth Whyte your Community Beat Sergeant, North Hykeham Police
kenneth.whyte@lincs.pnn.police.uk

Hykeham Rural Villages Email : EMAIL: hykehamrural.npt@lincs.pnn.police.uk

Facebook : <https://www.facebook.com/HykehamPolice>

@HykehamNPT

Community Beat manager PC Mark Wood 07973 846976

PCSO Sarah Lingard 07973 842 364

PCSO Jo Mackie 07973 845 791

Report Potholes 01522 782070

<http://www.lincolnshire.gov.uk/faultreporting> 01522 782070

Report Litter 01529 414155

Adult Concern 01522 782151

Report fly tipping

<https://www.n-kesteven.gov.uk/residents/waste-recycling-and-environment/report-or-request-a-waste-service/>

Non urgent police and medical

Health 111 Police 101

Transport and Travel

Call Connect 0845 234 33 44 or 01522 553143

8.30am - 7pm Weekdays and to 5pm Saturdays

Dial a ride 01522 544983 Disabled door to door

Car-sharing www.lincshare.co.uk

Trains www.thetrainline.com

Roadworks

roadworks@lincolnshire.gov.uk

To receive info on twitter #lincscs_roads

Report **illegal parking** 01522 511142 or email

ParkingServices@lincolnshire.gov.uk

Parish Council website

<https://eagle-swinethorpe.parish.lincolnshire.gov.uk/>

Lock Matters

Small, Friendly, Mobile Locksmiths

Lock Openings

Locks Fitted

UPVC Door Specialist

Call Ian on 01522 681697 or

mobile 07949 293134

8 Tacitus Way North Hykeham LN6 9ZE



For a hassle free
service by a workshop
that comes to you



@MobileCamperCare

Professional, local mobile workshop, caring for your
Motorhome, Caravan or Camper at your home, in storage
or on-site.

* or if you're thinking of buying a van we also offer
Pre-Purchase Inspection allowing you to buy with confidence.

Telephone (01522) 716920 Mobile (07864) 630767

Email mobilecampercare@gmail.com



Little bot bots

child minding



Ofsted registered childminder, offering a home from home day-care service in Eagle with spaces available now.

Please ring or email Victoria to discuss requirements or to arrange a visit.

Tel: 07789 010452

Email: Victoria@littlebotbots.co.uk

Address: Eagle, Lincolnshire

Scouts



27th Lincoln
Thorpe-on-the-Hill

Providing Scouting for ages 5 – 18
years old

Join our next great adventure.....

For meeting times and enquiries
contact:

Fran Firth
Group Scout Leader

Fran27lincoln.gsl@gmail.com

Or call 07952 480708



Swinderby
Pre-School



A local, friendly pre-school playgroup run by dedicated, qualified and experienced staff. Ofsted registered & inspected, providing quality care & education to children aged 2 to 5 years (government funding available for those eligible).

Opening times (term time only):

Monday: 8am - 12.05pm

Tuesday: 8am - 3.05pm

Wednesday: 8am - 3.05pm

Thursday: 8am - 3.05pm

Friday: 8am - 12.05pm

This includes breakfast club 8am–9am and early drop off 8.30am–9am, subject to minimum numbers.

For more information, please contact us on
01522 869362 or email us @
swinderbyppg@googlemail.com



EAGLE & SWINETHORPE PARISH COUNCIL

Eagle Parish Council

Two sets of minutes have been approved since the last edition of the Eagle Eye for the 29th June & 27th July 2021. A full copy of the minutes can be found on the Parish Council website.

[Homepage – Eagle and Swinethorpe Parish Council
\(lincolnshire.gov.uk\)](http://lincolnshire.gov.uk)

The parish council can be contacted by either email at – parishclerk@eaglevillage.co.uk or by phone – 01522 868936

The dates of the next parish council meetings are –
26th October 2021, 30th November 2021, 21st December 2021

The Parish Council has two vacancies, if you are interested in becoming a Parish Councillor or would like some more information, please contact The Clerk or any of the Parish Councillors.

Policies

The following policies were adopted –

- Data Protection
- Disciplinary Policy
- Grievance Policy
- Councillor Vacancy (Co-option) Policy

Planning

The parish council submitted ‘no comment’ for the following planning applications:

Proposed alterations comprising formation of new internal door and frame insertion of partition wall, re-opening of brick up internal wall and lowering steps to bathroom.

Village Farm, 20 High Street, Eagle Lincoln
Ref – 21/0787/LBC

Proposed single storey rear extension & alterations.

Hy-cenjo, High Street Eagle, Lincoln.
Ref – 21/0808/HOUS

Application for a lawful development certificate for an existing use or operation activity Equestrian Centre comprising a showground and other uses associated to include training, showing, eventing, competitions, reining & training.

White House Farm, Eagle Moor. Ref – 21/0098/
LDEXI.

Conversion of an existing stables into a residential annexe.

6 High Street Eagle Lincoln Lincolnshire LN6 9DH
Ref - 21/0791/HOUS

General Information

All four of the new speed signs have been installed, purchased with the £10,000 COVID19 grant monies received from North Kesteven District Council. In total the village has received nearly £30,000 in COVID grants with £20,000 granted to the Village Hall.

New signs are to be installed in the MUGA, to remind everyone that noise travels and to be mindful of the neighbours near to the park.

The Parish Council would like to get a team of volunteers together to refurbish the kitchen & toilet block. So, if you have skills in project management, filling in grant applications, local tradesman or just an enthusiastic volunteer that would like to get involved in a community project please contact the parish clerk, we would love to hear from you.

Rachel Popplewell, Parish Clerk

call CONNECT

CALL. CLICK. CONNECT

YOUR FLEXIBLE BUS SERVICE

Free to Register

Simply call us or go online to receive your membership number. It's that easy.

Book Your Journey

Give your membership number and journey details to our booking agent and we'll do the rest. You can also request your journey online 24 hrs a day.

Hop on the CallConnect Bus

Pay your fare, show your saver ticket or concessionary bus pass and enjoy the journey!

0345 234 3344 - LINCOLNSHIRE
0345 263 8153 - STAMFORD AREA

LINCSBUS.INFO



Service operates:
Monday - Friday 7am - 7pm
Saturday 7:30am - 6:30pm

Lincolnshire
LOCAL GOV. UNITS
Working for a better future

48 - Lincoln to Witham St Hughs

Monday to Saturday

Lincoln Bus Station, Stand N	06:40	09:00	11:00	13:00	15:00	17:00
Lincoln Debenhams	06:44	09:03	11:03	13:03	15:03	17:03
Lincoln, Valentine Retail Park	06:46	09:06	11:06	13:06	15:06	17:06
North Hykeham, Asda Layby	06:52	09:20	11:20	13:20	15:20	17:20
North Hykeham Station Cross roads	06:55	09:22	11:22	13:22	15:22	17:22
North Hykeham Pennells	06:58	09:25	11:25	13:25	15:25	17:25
Thorpe on the Hill, Post Office	07:02	09:30	11:30	13:30	15:30	17:30
Whisby, Thorpe Rd	07:06	09:34	-	13:34	-	17:34
Eagle Moor, Telephone box	07:09	09:36	-	13:36	-	17:36
Eagle, Primary School	07:11	09:38	-	13:38	-	17:38
North Scarle, Eyres Lane	07:17	09:43	-	13:43	-	17:43
Swinderby, Railway Station	07:22	09:48	-	13:48	-	17:48
Swinderby, The Plough	07:25	09:53	-	13:53	-	17:53
Witham St Hughs, Greenfinch Cres	07:35	10:03	11:43	14:03	15:43	18:03
Witham St Hughs, Juniper Way	07:38	-	-	-	-	-
Witham St Hughs, Juniper Way	07:40	-	-	-	-	-
Witham St Hughs, Greenfinch Cres	07:44	10:03	11:43	14:03	15:43	18:03
Swinderby, The Plough	-	-	11:52	-	15:52	-
Swinderby, Railway Station	-	-	11:57	-	15:57	-
North Scarle, High Street	-	-	12:02	-	16:02	-
Eagle, Primary School	-	-	12:07	-	16:07	-
Eagle Moor, Telephone box	-	-	12:09	-	16:09	-
Whisby, Thorpe Rd	-	-	12:11	-	16:11	-
Thorpe on the Hill, Post Office	07:50	10:15	12:15	14:15	16:15	18:15
Pennells	07:57	10:19	12:19	14:19	16:19	18:19
North Hykeham Station Cross roads	08:00	10:22	12:22	14:22	16:22	18:22
North Hykeham, Asda layby	08:03	10:25	12:25	14:25	16:25	18:25
Lincoln, Valentine Retail Park	08:23	10:39	12:39	14:39	16:39	18:39
Lincoln Bus Station, Stand N	08:35	10:50	12:50	14:50	15:50	18:50

Wright Foot Care

Richard Wright TCFCP
Foot Health Practitioner

Start on the
WRIGHT
foot



Fully Qualified & Insured
DBS Checked

Treatments include:

Nail Trimming • Thickened Nails • Verrucas • Corns • Callus • Cracked Nails
Ingrown Toe Nails • Athletes Foot • Fungal Nail • Diabetic Foot Care

Free Phone Consultation

07366 395 307

www.wrightfoot.care

 [@wrightfootcare](https://www.facebook.com/wrightfootcare)

Appointments:
Monday - Saturday
In the comfort
of your own home

 **ncfe**

Mobile Foot Health Practitioner



- Nail trimming
- Corn removal
- Callus reduction
- Home visits
- Routine foot care
- Diabetic foot care
- Fungal infections
- Cracked heels
- Ingrown toenails
- Thick nails reduced



Foot care in the comfort of your own home!

Ray Hotchin DipCFHP

07591 653995

www.rayhotchinfootcare.co.uk



Wet

or Dry Grooms, Clipping, De-Shedding, Claw Clipping, Kitten Introductory Sessions, Pick Up & Drop Off Service and so much more!

Grooms starting at £45

Thomas' Professional Cat Grooming is the feline department of Thomas'

Professional Dog Grooming

Contact us today to book your appointment or more information!

(01636 626411 (07568 990991

: www.thomasdoggrooming.com

Lucas Court, Fenton, Newark, NG23 5DE

Full Grooms, Clipping, De-Shedding,
Wash & Blow Dry, Nail Trimming,
Parasite Removal,

Puppy Introductory Sessions,
Pick Up & Drop Off Service and so much more!

Full Grooms starting at £35

Wash & Blow Dry starting at £20

Contact us today to book your appointment or more information!

(01636 626411 (07568 990991

: www.thomasdoggrooming.com

LJM
HOMECARE
LINCOLN

You can't help getting older,
but you don't have to get old.



We take the time to get to know you and understand your needs.

- ✓ COVID-19 Framework
- ✓ Client Satisfaction
- ✓ Affordability
- ✓ Experience
- ✓ Reliability
- ✓ Quality

info@ljmcare.com

01522 700400

www.ljmcare.com

Body and Sole

The Country Clinic with the Calming Air

Are you feeling stressed? Do you find it hard to switch off? Are you struggling to sleep?



Either a Therapeutic **NO HANDS**® massage or a Reflexology session may be able to help.

Call Sally Smith on the number below or visit www.sallysmith.co.uk to find out more

“My feet are killing me”

If this sounds like you then call to book your appointment NOW!

Pain-free feet are just a phone call away. Most foot problems can be treated quickly and easily, there’s no need to suffer in silence.

Sally Smith

Chiropodist, Reflexologist, NO HANDS® massage Therapist

Body and Sole, Lime Grove Clinic, High St, Harby, Newark, Notts NG23 7EB

01522 704294 or 07974 580 262

Reflexology – helping you to relax and rebalance

Reflexology is a non-intrusive complementary therapy based on the theory that different points on the feet and hands correspond with different organs and systems in the body. Reflexologists work on these reflexes to help re-balance the vital energy in the body, which in turn improves the general feeling of wellbeing, and aids deeper relaxation.

Reflexology may also provide relief from a wide range of acute and chronic conditions, complementing allopathic medicinal approaches.

Using gentle massaging techniques on feet and hands, I have had success in helping my clients with a range of conditions including menopausal symptoms, spinal injuries, sleeping difficulties, autoimmune diseases and arthritic pain.



I have a Centralia Reflexology Mastership (incorporating Agored Cymru Units at Level 5) in Clinical Reflexology and belong to the Association of Reflexologists.

If you would like to find out more or come for treatments, contact me, Jane, on 01522 869094 or 07976 638822 or email jane@balancedreflex.com. My treatment rooms are located in Eagle, Lincoln. www.balancedreflex.com @BalancedReflex

**INDEPENDENT FAMILY
OPTICIAN
FRIENDLY PROFESSIONAL
EYECARE**

**j:d
opticians**

**17/19, Appletongate,
Newark**

- Private and NHS Work
- Eye Examinations available 6 days a week
- Childrens Eyecare
- Home visits available for the housebound
- Contact lens service
- Same day repair service
- On site glazing for most prescriptions
- Large range of frame styles on display
- Expert advice always available

01636 611133
(opposite the Palace Theatre)



Mobile Hairdresser

Fully qualified
Based near Swinderby
Also with home salon

Reasonable rates!

For Ladies & Gents

From a trim to highlights
Call Julie on
07970 699 204



SING DANCE ACT Come and join in the fun!!

Saturdays 10am-12.30pm
at
Swinderby Village Hall

Musical Theatre classes taught by friendly
qualified teachers

BALLET TAP JAZZ

Classes on Tuesdays from 4pm
at
Swinderby Village Hall
Ages 3-18

For more information please call:
Danielle – 01522 696100
or Carol – 01522 791898
Visit – www.dancelincoln.co.uk

Information from Lincolnshire County Council : **Highways contact details and useful information**

A few things we don't deal with:

We look after the majority of issues within the highway but there are some that we don't:

Foul sewers and water leaks

Anglian Water www.anglianwater.co.uk

Severn Trent Water www.stwater.co.uk

Mud on the Road

Lincolnshire Police **Call 101**

Street name plates, dog fouling, litter, street cleansing and fly tipping on the Highway

City of Lincoln Council www.lincoln.gov.uk

Boston Borough Council www.boston.gov.uk

East Lindsey District Council www.e-lindsey.gov.uk

North Kesteven District Council www.n-kesteven.gov.uk

South Kesteven District Council www.southkesteven.gov.uk

South Holland District Council www.sholland.gov.uk

West Lindsey District Council www.west-lindsey.gov.uk

To report a fault

A fault is something wrong with the highway network that requires fixing.

Typical examples are potholes, street lights that are not working and broken or missing drain covers. The best way to report a fault is to log it on the web portal

at www.lincolnshire.gov.uk/faultreporting

To enquire about highways services

Typical examples include when will the road improvements in my area be carried out.

There is lots of useful information on our web pages at www.lincolnshire/transport-and-roads

If you can't find what you are looking for or the enquiry is about something very specific please email us at

cschighways@lincolnshire.gov.uk

Keep up to date with roadworks

Visit www.roadworks.org to find up to date information about all roadworks carried out by Lincolnshire County Council and utilities such as Anglian Water.

To talk to us

Our Customer Service Centre number is 01522 782070

Our Service Centre Advisors can help with a wide range of questions and can look up what action has been taken with reported faults and enquiries between 08:00-8:00 Monday to Friday.

If you have a highway emergency outside of these times please call Lincolnshire Police on 101

Learn more about services we provide

To find information on all our services for example grass cutting, street lighting, grit bins, patching and surface dressing visit www.lincolnshire.gov.uk/transport-androads/highways-maintenance/

You can also view our programme of works for the current financial year and download our publications and policies.

Follow us on Twitter

You can follow us on Twitter. We regularly tweet roadworks updates, incident details and in the winter when we are gritting.

[@LincsCC_roads](https://twitter.com/LincsCC_roads)

Your local trusted Independent Mortgage Advisor

Established in Lincoln for
nearly 30 years, specialising in

- MORTGAGES
- PERSONAL PROTECTION
- REMORTGAGES
- PROPERTY INSURANCE
- BUY TO LET
- EQUITY RELEASES

Call today and arrange a meeting in our
office in the Bailgate or at your home



FINANCIAL SERVICES

10 Gordon Road
Bailgate
Lincoln LN1 3AJ

01522 511177

SW Financial Services are authorised and regulated by the Financial Conduct Authority.
Your home may be repossessed if you do not keep up with your mortgage repayments.

BUTCHER & BLOCK

YOUR ONLINE
LINCOLNSHIRE
BUTCHER
EST. 2020

 Find us on
Facebook

 Instagram

WWW.BUTCHERANDBLOCK.CO.UK



Michael Waterton

Cavendish, 12 Church Lane, Eagle LN6 9DJ

Tel: 07765 910281

Mick the Stitch,

a Saville Row-trained tailor, now working from home is able to undertake all types of alterations.

✂ Suits

✂ Top Coats

✂ New Zips

✂ Wedding and Bridesmaid dresses, boys' waistcoats



✂ Jackets, Trousers, Vests

✂ Leather and Motorbike gear

✂ School Uniforms

✂ Mother of the Bride outfits



FARM SHOP

Open daily 9am-5pm (Sun 10am-4pm)

Everyday essentials, estate produce, locally sourced Hambletons meat and all your Farm Shop favourites.



CHRISTMAS AT DODDINGTON

23 November - 24 December (Wed-Sun)

Explore magical secret gardens this Christmas as our Elizabethan Hall is once again transformed for the festive period. Booking essential.



PYO PUMPKINS

2-31 October, free entry

Carve up a creepy scene for your doorstep or pick up delicious seasonal recipe ideas from the Farm Shop when you take your pick at our Pumpkin Patch.

EXPLORE • EAT • SHOP • STAY

DODDINGTONHALL.COM

01522 694308 • info@doddingtonhall.com • Lincoln LN6 4RU

NOTICE FROM LINCOLNSHIRE HIGHWAYS DEPT: REPORTING HIGHWAYS ISSUES

All highways issues should be reported via www.lincolnshire.gov.uk/faultreporting. The online system is the quickest and easiest way to report problems and is available 24/7.

However, you can also raise matters via customer services (by calling 01522 782070 or emailing cschighways@lincolnshire.gov.uk) or by contacting your local county councillor.

While we realise that you may prefer to speak to the local highways officer directly, we need them out dealing with highways issues not in the office on the phone.

For more complex, ongoing issues, you can request an annual meeting with your local member and the highways team.

In addition, my support councillor, Cllr Perraton-Williams, and I are currently committed to visiting each parish and town council with the local highways team.

I can assure you that all issues reported will be dealt with.

Kind regards CLLR RICHARD DAVIES

EXECUTIVE COUNCILLOR FOR HIGHWAYS, TRANSPORT AND IT



Powell Legal Consultancy

Providing solutions, cutting costs

Wills and Powers of Attorney



Local personal service
Competitive fees
Legally qualified Will Writer (LLB Dip LP)
FSWW

Free home visits

call: 01522 306326/0778 658

5728

Email:

liz@powelllegalconsultancy.co.uk

www.powelllegalconsultancy.co.uk

Member of Society of Will Writers –

Fully Insured

Old Chandlery Apartments

Do you have friends or relatives visiting?

Not enough bedrooms or sofa-space?

We can solve your problem...

We offer a bed and breakfast solution combined
with the luxury of a small serviced apartment.

Visitors can relax and cater for themselves
(Continental / English breakfast ingredients included)
in a quiet, rural setting - plenty of off-road parking.

Please call Jane on **01522 868123** for
details, prices and information.

Old Chandlery Apartments, Morton, Swinderby.
jane@ocapartments.co.uk www.ocapartments.co.uk



COLLINGHAM PHARMACY



YOUR local pharmacy dispensing NHS, Private and Veterinary prescriptions.
Offering a wide range of medicines, vitamins, toiletries, pet medicines and seasonal gifts.

NHS Services Include:

- ✓ **Medicine Use Review**
- ✓ **Morning After Pill**
- ✓ **Blood Pressure Measurement**
- ✓ **Minor Ailments Scheme**

High Street, Collingham, Newark, NG23 7LB Tel: 01636 893038

email: collingham.pharmacy@nhs.net

Mon 8.45am-6.30pm Tue-Fri 8.45-6pm Sat 9am-12.30pm Closed 1pm-2pm daily

EAGLE VILLAGE SHOP & POST OFFICE

Now stocking local produce & offering an ordering service for:

- *Meat / Pies from the Lakeside Butcher
- *Fresh bread / pastries from The Welbeck Bakehouse
- *Cakes and bread from Curtis & The Wilcox Bakery
- *Fresh fruit & vegetables from Mark Cheatham
- *Locally made cards, gifts, honey, fresh sandwiches, alcohol and much more!

Post Office services incl: Free cash withdrawals & deposits / pay in cheques

By supporting your local shop you are supporting other local businesses too!

OPENING HOURS *CLOSED FOR LUNCHEVERY DAY 1-2PM*****

MONDAY	8:30AM - 5:30PM	(POST OFFICE 9AM - 5:30PM)
TUESDAY	8:30AM - 5:30PM	(POST OFFICE 9AM - 5:30PM)
WEDNESDAY	8:30AM - 1PM	(POST OFFICE 9AM - 1PM)
THURSDAY	8:30AM - 5:30PM	(POST OFFICE 9AM - 5:30PM)
FRIDAY	8:30AM - 5:30PM	(POST OFFICE 9AM - 5:30PM)
SATURDAY	8:00AM - 1PM	(POST OFFICE 9AM - 12:30PM)
SUNDAY	- CLOSED	



Are you a Silver Fox Globe Trotter or want to improve your lifestyle?

LATER LIFE LENDING enables you to enjoy your money
that is tied up in your property, for the over 55's

Do you want to?

- Enhancing your Lifestyle?
- Go on a Trip of a Lifetime?
- Repay your interest only mortgage?
- Buy a new home or buy a holiday home?
- New Car or Campervan?
- Home Improvements, New Kitchen or add a Conservatory?
- Help your Children or Grandchildren get on the property ladder? or
- maybe help with University fees.
- Debt Consolidation
- Annual draw down to enhance your pension income
- RETIRE!!

This all comes with...

- No Monthly Commitment
- The option to pay interest.
- Inheritance Protection
- You always own your own home
- Fix interest rate for life, with rates as low as 2.35%
- Whole of the Market Advice
- No obligation meeting and quotation from highly experience Advisers - who are members of the Equity Release Council.



Mandy Belt
CeMap, CeRER

**38 Years in the
Financial Services**

**We are a local company serving Local people,
we pride ourselves in always offering excellence in customer service;
to arrange a meeting with Mandy**

**Call 03455 443 499 or
e: info@yourmortgagehub.co.uk**

Approval Number:
Sol7670

Your home may be at risk if you do not keep up with your
repayments on your mortgage or any other debt secured on it.



Approval Number: Sol7771



Your Mortgage Hub are a Local company helping local people

Whole of Market Lending for...

- First Time Buyers
- Re-Mortgages
- Home Movers
- Help to Buy Specialists
- Forces Help to Buy – Approved and recommended By the MoD
- Buy To Let
- Retirement Mortgages & Equity Release
- Shared Ownership
- Debt Consolidation
- Home improvement Loans
- Protection & insurance advice for you and your property

We pride ourselves in always offering the very best advice and excellence in customers service to arrange a no obligation meeting with **Jenny Holt** who is your local adviser.....

Call: Jenny Holt on 0345 5443499 or Mobile number 07720976688

Email: jenny@yourmortgagehub.co.uk



Your home may be at risk if you do not keep up with your repayments on your mortgage or any other debt secured on it

Think carefully before securing other debts against your home. Your home may be repossessed if you do not keep up repayments on your mortgage

EAGLE VILLAGE HALL - HIRE CHARGES

24 September 2021

VILLAGE RESIDENTS

Sunday to Thursday £8.00 per hour

NON-RESIDENTS

Sunday to Thursday £10.00 per hour

...

VILLAGE RESIDENTS

Fridays & Saturdays - Daytime up to 6pm £8.00 per hour

Evenings £13.00 per hour

NON-RESIDENTS

Fridays & Saturdays - Daytime up to 6pm £10.00 per hour

Evenings £13.00 per hour

(a £100 refundable deposit is required for evening bookings)

...

FURNITURE HIRE - Residents only (per day)

Large Tables £2.00 each, Small Tables £1.50 each, Chairs £1.00 each

...

Set-up Time (before 6pm) - Charged at day rates

Minimum booking period 1 hour - Bookings must be for the total time the hall is in use. (Please include preparation & clear up time.)

Eagle Village Hall are **LICENSED PREMISES** for the consumption of Alcohol. The Village Hall Committee is the licensee of these premises and you will need permission from the committee to sell or supply alcohol, our licence regulations must be observed & costs may apply.

Please contact us for details.

Please contact bookings secretary for details:

Jackie Jinks 01522 868418

THE EAGLE EYE

Editor Jane Wallis, 15 Church Lane, Eagle LN6 9DJ
01522 869094 janewallis41@btinternet.com

Treasurer Anne Rogers, 4 Church Lane, Eagle, LN6 9DJ
Anne.horsman@outlook.com 01522 869996

Distribution Mike Waterton 01522 869876

Advertising Rates (6 issues)

Full Page	£90
Half page	£50
Quarter page	£30
One-off advertisements	Full page £20, Half page £14, Quarter page £10
Family announcements	Free
Diary entries	Free

Publication date 1st week in February, April, June, August, October, December

The views expressed in the magazine represent those of the individual contributors and not necessarily those of the Editor. Readers are advised to take their own precautions before entering into any agreement with advertisers to obtain goods or services.

Village Facebook Pages

‘Eagle Local Information and What’s On in our Village’ - for posting information re events in the village, weekly groups/ clubs, useful numbers, suspicious activity etc.

‘Eagle Sales and Wants’ For those looking to sell or gift items and others who are looking for that specific something.

‘Eagle & Swinethorpe Parish Council’ for notices from the Parish Council

‘Friends Of Eagle School - FOES’ for information on what FOES are up to.



USEFUL TELEPHONE NUMBERS

Collingham Medical Centre	General Enquiries	01636 892156
Collingham Pharmacy		01636 893038
Community Beat Team	See inside	Page 6
Eagle Bowls Club	Ted Coulson	704340
Eagle Indoor Bowls	Roger Bishop	869557
Eagle Post Office		868212
Eagle Primary School		868354
Eagle Churchwardens	Sue and Chris Stiles	869296
OAP Party Fund	Roy Bell	868567
Parish Clerk	Rachel Popplewell	Parishclerk@eaglevillage.co.uk
District Councillor NKDC	Cllr Sally Appleby*	07714 271450
Playing Field Committee	Parishclerk@eaglevillage.co.uk	
Village Hall Bookings	Jackie Jinks	868418
Village Hall Committee	Simon Spear	869490
Village Produce Ass'n	Clare Evans	07825 160985
Village Website		www.eaglevillage.co.uk
200 Club	Rodney Fagg	869123
Fellowship Lunch	Jean Roberts	868797

*Cllr Appleby's email address is cllr_sally_appleby@n-kesteven.gov.uk

If you would like your telephone number added to this list or any of the above are incorrect please contact the Editor on 869094 or janelwallis41@btinternet.com

EAGLE & SWINETHORPE NEIGHBOURHOOD WATCH CO-ORDINATORS

Jon Faiers , Fallowfields, Doddington Road, Whisby	694352
Sue Ross , 7 Kestrel Rise, Eagle	868411

Publisher accepts no responsibility for the validity of any of the advertisements.
Printed by Pott Morton Printers, Lincoln