

THE EAGLE EYE



Do you enjoy walking?

Need a friend or two to walk with?

Contact Angela on 07969428167 for further details.

Do you know the health benefits of walking for your physical AND mental health?

'Hilltop Eagles' are a small group of ladies who love walking and would love you to join them. ([local](#) routes)

The next issue of the Eagle Eye will appear at the beginning of February

Please send in your contributions before the copy deadline - **Friday Jan 21st**



COLLINGHAM MEDICAL CENTRE

High Street
Collingham
Newark NG23 7LB
Tel: 01636 892156

Email: collingham.medicalcentre@nhs.net

SURGERY OPENING HOURS
Monday – Friday 8.00am - 6.15pm

For Appointments telephone: 8.00am – 6.15pm
For Prescriptions telephone: 10.00am – 12.00pm

CHRISTMAS 2021

Monday 27 December – **CLOSED**
Tuesday 28 December – **CLOSED**
Monday 3 January 2022 – **CLOSED**
(Normal opening hours all other days)

The Collingham Medical Centre team would like to wish everyone a very Merry Christmas and Happy New Year.

We also offer a very warm welcome to new team members Dr Edda Schuerch, Dr Kate Rees and Sarah Holt, Respiratory Specialist Nurse.

Our communication with patients relies on current information. If your personal details change, including telephone numbers, please let the practice know. Thank you.

Out of Hours Service is provided from 111 when the surgery is closed.
Website: www.collinghammedicalcentre.co.uk

PRESCRIPTION ROTA

DECEMBER		
8th	Rodney Fagg	869123
15th	Mari Dawson	868310
22nd	Betty Spackman	869676
29th	Betty Spackman	869676
JANUARY		
5th	Clare Kelly	07847 966803
12th	Lynda Williams	869225
19th	Rodney Fagg	869123
25th	Mari Dawson	868310
FEBRUARY		
2nd	Betty Spackman	869676

WHAT'S ON DIARY

December		
Sat 11th	OAP Christmas dinner	
Sun 12th	Carols in church	4:00 pm
Tuesdays	Coffee Stop in Church	10-12 am
January		
Tues 4th	Youth Club	5:30—7pm
Tuesdays	Coffee Stop in Church	10-12am
Mon 24th	PCC Meeting, vestry	10:00am
Fri 28th	Ladies' quiz night, Village Hall	
February and beyond		
Tues 1st Feb	Youth Club	5:30—7pm
Sat 9th April	VPA Spring Show	

MOBILE LIBRARY DATES

Outside Eagle Post Office

December—Tuesday 7th 15:15—16:30

January - Tuesday 4th 15:15—16:30

For more info go to https://capitadiscovery.co.uk/lincolnshire/assets/-/docs/mobile_timetables/E.pdf

EDITOR'S NOTE

Welcome to the Christmas edition of the Eagle Eye—fingers crossed it unfolds into a more “normal” one than last year. There are opportunities to sing carols and participate in Christmas events in the Village Hall—see adverts for details.

Seven years on from editing my first Eagle Eye, I am handing over to the capable hands of Judith Waters.

I'd like to thank all contributors past and present for making it the valuable community resource that it is. Anne Rogers will continue as treasurer, and the distributors remain the same. Thank you to all of you for your time and effort.

Ali Bottom	Glenda Spacey
Roger Anderson	Mrs Malpass
Carmel Nickolson	Chris Patty
Sue Ross	Stuart Hayes
Judith Eaton	Jane Copley
Clare Kelly	Jackie Jinks
Rose Afford	Roy Bell
Sue Stevens	Shaun Clare
Chrissy Munks	Mike Waterton

Judith has passed on the following message:

Hello All, My name is Judith, Roddy Cordon's granddaughter, I will be endeavouring to take over from Jane as Editor of the Eagle Eye. J A Waters

Judith can be contacted via email at judith.waters@hotmail.com or 07896475418 .

Have a very enjoyable, peaceful and healthy Christmas, and a prosperous New Year.

Jane

Church Notices

All Saints Church, Eagle

Services for December

Thursday 2 nd	Holy Communion	10.00a.m.
Sunday 12 th	Carols Singalong	4.00p.m.
Sunday 19 th	Morning Prayer	11.00a.m.
Christmas Eve 24 th	Midnight Mass	11.30p.m.
Sunday 26 th	Group Said Communion at Swinderby	10.30a.m.

Services for January 2022

Thursday 6 th	Holy Communion	10.00a.m.
Sunday 9 th	Morning Prayer	11.00a.m.
Sunday 16 th	Evening Prayer	4.00p.m.
Sunday 23 rd	Holy Communion	11.00a.m.
Sunday 30 th	Group Holy Communion at Eagle	10.30a.m.

Coffee Stop – on Tuesday mornings between 10am and 12 noon.

P.C.C. Meeting – Monday, 24th January in Church at 10am.

For Pastoral Matters and Memorial Stones please contact the Churchwardens, Chris and Sue Stiles 869296.

Eagle P.C.C. wishes everyone a happy and peaceful Christmas.

Jean Roberts



Eagle Church
Christmas Carols Singalong
with
Christmas Cake, Mince Pies & Mulled Wine
on
Sunday 12th December at 4.00p.m.

Come along and choose a carol to sing
whilst enjoying seasonal refreshments.

We shall also be collecting hats, scarves
and gloves for the Nomad Trust.



Letter from Rev. Andrew Vaughan

Hello everyone,

As I write these notes it seems hard to believe that this Eagle Eye will be looking ahead to Christmas. I am sure I am not alone in hoping and praying that this year we will be able to spend more time with our loved ones, to enjoy all that brings us joy and wholeness.

The incarnation, the story of Jesus' birth is very much about God blessing our human nature, and how this flourishes in relationship to others.

Perhaps as we look at the revelation of God in the crib it will open our eyes to see God all around us, in others we encounter and the world around us.

I look forward to seeing many of you with our various services to celebrate the story of God with us.

As ever

Andrew

Please find below a list of services for the group for Christmas that you may not have gathered.

Carol Services

December 12th 16.00 Eagle

December 13th 18.30 Swinderby

December 17th 19.00 North Scarle

December 19th 16.00 Thorpe

Christmas Communion Services

24th December

10.30 Carols around the Christmas Tree Thorpe

21.00 Midnight Mass Thorpe

23.30 Midnight Mass Eagle

25th December

10.00 Christmas Communion North Scarle

10.00 Christmas Communion Swinderby

VOLUNTEERS REQUIRED

Please do not stop reading this plea at the mention of the word “church”. In a village community like Eagle the church is not just a spiritual home nor is it just used for hatch, match and dispatch (christenings, marriages and funerals).

Eagle Church also has non-religious activities it is a centre for coffee stop, concerts, art and craft fairs and much more. The church is a beautiful and peaceful building which is open to anyone.

This is a plea for anyone who has a couple of hours to spare every six to eight weeks and is willing to help out with cleaning duties at Eagle Church.

Unfortunately the building, like any other, needs to be cleaned. We currently have three teams of two people who clean the church on a rota basis which presently involves approximately two/three hours work every six weeks.

More volunteers are needed to keep the church clean and welcoming for the local and wider community.

If you feel able to help out please contact Margaret Melton at 47 High Street or telephone 861818 or 07752679358.

Thank you for reading this plea and I hope someone out there will be able to help. Take care.

Collingham Patient Participation Group

The Patient Participation Group (PPG) working alongside Collingham Medical Centre (CMC) was able to meet in person for the first time since the first lockdown. It was good to meet everyone face to face, albeit masked, in well ventilated and well-spaced area (in fact it was the new patient observation area for the COVID Vaccine campaign known to many of us as the former Collingham Library).

COVID vaccinations were first to be discussed. CMC informed us that there are two routes available to receive the third (booster) dose. The national system in designated centres which can be booked via the National Booking Service (119) or at CMC once the vaccine has arrived. Our GP practice will be supporting the campaign for the locality and clinics will be over weekends so as not to disrupt GP services during the week. Eligible patients need a minimum of 6 months between their last COVID Vaccine and booster. You will be contacted as soon as receipt of the vaccine is confirmed; there is no need to contact the Medical Centre.

FREE Lateral Flow Test Devices are available from the Collingham Pharmacy - it is important to continue to test to protect you, your family and our community. Follow national guidance to isolate on a positive test and attend a PCR testing Centre for any COVID symptom (please do not assume it's a cold). Lateral Flow Testing offers reassurance that you are not carrying the virus, even if symptom free. If you have symptoms, please book PCR test and isolate.

The dispensaries at the CMC and Pharmacy continue to work to **3 working days** from order to collection, please try not to present early this is frustrating for all parties as the supply chain and our team members continue to see daily disruption to our dispensing services.

The PPG has undertaken a recent poster campaign highlighting how long some common ailments may last and also a reminder to sign up for the NHS app. Please keep a lookout for these posters on notice boards in the 34 villages served by CMC. Patients can access their Covid-19 vaccination status through the NHS app. Patients are advised by [gov.uk](https://www.gov.uk) that there is no need to contact CMC for their vaccination status.

The NHS App, a simple and secure way to access a range of NHS services on your smartphone or tablet.

You can use the NHS App to check your symptoms and get instant advice, book appointments, order repeat prescriptions, view your GP medical record and more. If you already use SystmOnline you can continue to use it. You can use the NHS App as well. For more information go to www.nhs.uk/nhsapp

The Rural Advice Centre holds an updated directory of local groups which is available on their website.

The CMC has been affected by the **national shortage of blood bottles** which has meant only essential blood tests were taken. Supplies are now beginning to come through and CMC hope to be in a position to offer the annual reviews in your birthday month from the end of October. However, if you are concerned about your medicines please seek advice and not wait until your routine review.

COVID continues to affect our communities and CMC as team members and their families are required to isolate – this does sometimes means appointments are rescheduled at short notice. Please bear with them. The current infection rates are available on the Nottinghamshire County Council website. CMC continue to work in a safe way and offer telephone triage for some symptoms so that you can be seen in red zones to protect all.

CMC are **pleased to welcome new staff** Dr Francis Da Silva (is supporting over the Winter months), Dr Kirsty Wilson and Dr Gerty Gertrude Agbedeyi are our current GP Registrars. New permanent GPs have recently joined the team – Dr Edda Schuerch and Dr Kate Rees.

Collingham Medical Centre continues to welcome new patients, the patient list currently standing at 7,489 and do have the physical space to support all the new developments in our area. Welcome to all those who move into our communities.

The PPG continue to be very proud and happy to support and work with the amazing team at Collingham. Thank you for all you do.

EAGLE EYES PAINTING AND DECORATING SERVICES

Female painter and decorator.

All aspects of inside painting and decorating
undertaken.

Also outside - including fence panels, sheds,
garage doors etc.

Competitive prices.

Over 25 years experience.

For more information and a free quotation
please contact - Vicky Aldous 07799467189

Telephone
Lincoln 01522 / 684825
Mobile 07850 / 418744

35 Station Road
Thorpe On The Hill
Lincoln
LN6 9BS

CHRIS MARTIN

*Painter & Decorator
Builder*

*Specializing in all aspects of building work to properties, including kitchen &
bathroom fitting, wall & floor tiling, plumbing, joinery, plastering,
laminated wood floor laying & much, much more.*

No job too small, so call now for a free quote & friendly expert advice

HOME IMPROVEMENTS

PROPERTY REPAIRS

Ian Sheldon Plumbing Services

Oil Fired Boiler
Installation, Maintenance & Repairs

07970 064703

imsheldon36@aol.com



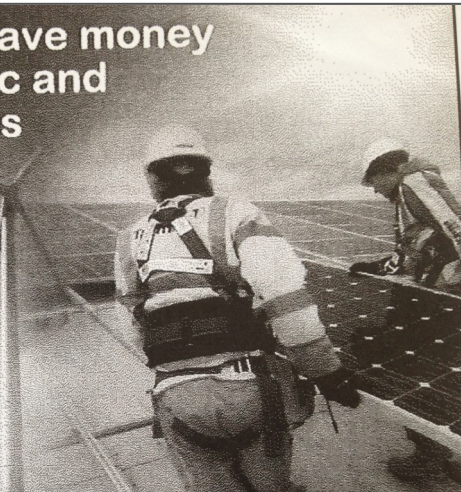
Registered
Business

Boiler Installation/Repair
Full Bathroom Installation
General Plumbing Maintenance

Make electricity and save money with Solar Photovoltaic and Solar Thermal Systems

- PV and Solar Thermal Installer
- Full Design & Installation
- Domestic and Commercial
- PV Solar Panels
- Wind Power Specialists
- All Electrical Work Undertaken

We will talk you through the procedure
and work out examples of potential savings
on your household energy bills.



EAGLE ELECTRICAL



is an approved MCS Solar PV installer

Call for a FREE quote today:

01522 868072

07966 436944

www.eagleelectrical.co.uk



- ✦ TRADITIONAL BRUSH AND VACUUM SERVICE
- ✦ SWEEPING CERTIFICATES ISSUED
- ✦ NESTS REMOVED
- ✦ PROFESSIONAL, CLEAN SERVICE
- ✦ CAGES, CAPS AND COWLS FITTED
- ✦ FULLY INSURED
- ✦ POLICE CHECKED

01636 616425

wilkinschimneysweep.co.uk/newark 

Taylor Tree Services

Gary Taylor
N.D.A

All aspects of tree and hedge work
Undertaken
NPTC Qualified

Fully Insured

Domestic and Commercial

24 Fosse Lane
Thorpe On The Hill
Lincoln LN6 9BE

Mobile: 07845720099
tel: 01522 685690
gary.taylor.10@gmail.com



PETE COWAN

DpT ADI / Fleet
Driver Trainer

RoSPA Diploma in
Advanced Driving
Instruction

www.a1drivertraining.co.uk



Beginners,
Theory, Advanced,
Defensive & Corporate
Training

Tel: (01522) 778266
Mob: 07885 106284

Chestnut House, Wigsley Road,
North Scarle, Lincoln. LN6 9HD
e-mail: pete@a1drivertraining.co.uk



The Boiler Man

shhh...
save it!



**Have your
boiler regularly
serviced and
save money**

**Evening Tel: 01 522 789840
Mobile Tel: 07946 11 4955**

Mark Wood Heating Ltd.

Oil Boiler Specialist

Servicing - Installation - Repairs

OFTEC REGISTERED

Full Central Heating Systems

Boiler Replacements

System Additions & Upgrades

Radiators - Pumps - Controls

Unvented Hot Water Systems

Power Flushing.

01427 628004 / 07703 217875



News from Eagle School

The theme running through our new school year for all classes has been considering how we are all able to demonstrate how we can be responsible and show our school values in all that we do. With important dates in the calendar, we have certainly seen this in action.

Our older children have stepped into new roles including Head Boy, Head Girl, School Councillors and House Captains. Our Councillors meet with the classes to talk about the school, routines and how we all work together; whilst our House Captains look for evidence of our school values in action to award certificates across the whole school. The connections and relationships are something to behold and the children are pleased as punch to receive an award from their peers – happy times.

Harvest Festival

Every year we reflect in school about sharing and gathering the harvest - considering our locality and the ways in which we can 'harvest' to support others. This year we continued supporting the Lincoln Larder by asking for food donations. Together we recognised the growth of food banks over the recent years has been huge, alongside the amount of families who rely on these facilities, all donations were gratefully received.

We usually offer our thanks for the donations by gathering together in Church to share our learning for our wider school family. Whilst we didn't visit the church this year, we all still contributed to a harvest service and streamed the videos on our School link. The children were still able to learn about presentational voice and the skills required to stand up and perform. And we all got a treat watching the video clips from the comfort of our classrooms or home – together whilst apart.

Remembrance Day

As part of Remembrance Day, we 'dressed like a poppy' in as much red as we could muster in honour of 100 years of the Royal British Legion. Our Head Boy and Head Girl then visited the war memorial to pay their respects.

Before we came together as a school beneath our flag to mark the two minutes silence. The children were incredibly respectful, led the service beautifully and did Eagle School proud.

The sound of meaningful song was listened to and pondered. The singular bugle played the last post as we stood silently and our service children raised the school flag. Our children shared thoughts and read poems – lest we forget. One of the most moving and proudest events which was spectacularly supported by our school family raising funds for the Royal British Legion

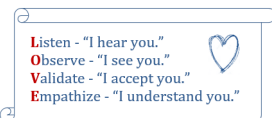
Children in Need

Our giving and thoughts still haven't stopped as we have also supported Children in Need this term with a 'mobile cake sale' – the trolley of delights was wheeled through the school so that everyone could spend their pennies on a sweet treat in aid of this worthy charity. We really did have a cake mountain generously donated by the school staff, so in the spirit of 'childhood' we all enjoyed an extra cake and had a mini-disco – smiles, laughter, dancing and fun! We raised a total of £69!



Ink Cartridges

With working from home on the increase you may find your printer is being used lots more. We have signed up for a recycling programme which will actually help to raise funds for school by bringing us your rubbish! If you can find a used ink cartridge at home or in the office, please pop them in the collection box in the school office vestibule. Thank you.



Mindful Mantra

“Children are whole people. They are separate individuals. They are humans with problems and plans and goals and opinions and preferences and interests and wants and needs and feelings and good

days and bad days and ideas and anxieties and hopes and fears and dreams and disappointments that are just as valid as ours.

Give them space to grow and explore. Help them if and when they ask for help. Encourage them when they struggle. Support them when they fail. And guide them gently when they get off course. Love is the answer to every question, every problem, every challenge. ” (L.R.Knost)

Everyone at Eagle School wishes everyone in our village community love, health and mindfulness.



Head Teacher: Mrs H Adams BEd (Hons) QTS, NPQH

Eagle CP School, Scarle Lane, Eagle, Lincoln LN6 9EJ
T: 01522 868354 F: 01522 868354 E: enquiries@eagle.lincs.sch.uk

www.eagleprimary.org.uk



Friends of Eagle School

Eagle CP School, Scarle Lane, Eagle, Lincoln LN6 9EJ

— Helping to raise money and opportunities —



We have a calendar full of exciting events planned for the year, so please keep an eye on the Facebook page (Friends of Eagle School – FOES) for more details.

We have the 12 days of Christmas event coming up for the children to take part in during December, and the ladies' quiz night in January. Get your quiz teams ready!

We have a range of preloved uniform and PE hoodies for sale on our website, please take a look on

www.pta-events.co.uk/friendsofeagleschool

Sadly, we are saying goodbye to Katie as our current treasurer and we are in need of someone new to take on the role. We are also on the look out for new committee members and helpers for events, so if you enjoy events planning, have ideas for fundraising to benefit the pupils of Eagle Community Primary school, or simply want to meet new people by lending an hour or so of time at a future event, please don't hesitate to message the facebook page or email us at

foeseagle@gmail.com

We look forward to seeing you all soon, and as ever, thank you for your continued support, FOES.





Eagle Baby and Toddler Group is a weekly playgroup for children from birth to 5 with their parents, grandparents or carers. We meet every Thursday in termtime from 9.30 – 11am at Eagle Village Hall.

We have welcomed lots of new families this term and enjoyed seeing the group get busier and the children playing together and making new friends.

Nanny Sue runs a different craft activity every week, and this term she helped the children to make a beautiful poster for the village's Harvest Festival. They have also made necklaces, pumpkin faces and treat or treat bags for Halloween. We are very grateful to Sue for her hard work and creativity, and to everyone else who helps every week to keep the group running.

New families from Eagle and local villages are always welcome to attend, and the first session is free. Please see "Eagle Baby and Toddler Group" on Facebook for more information.



HALL FARM CHRISTMAS SHOP

Newton on Trent, Lincoln LN1 2LL

- ★ **FRESHLY CUT HOME GROWN**
Nordmann Fir and Norway Spruce **CHRISTMAS TREES**
available from 27 November - delivery can be arranged
- ★ **TREE AND HOME DECORATIONS**
- ★ **INDOOR AND OUTDOOR LIGHTS**
- ★ **GIFT WRAP AND BAGS**
- ★ **FRESH WREATHS AND HOLLY**

OPEN EVERY DAY FROM
TUESDAY 16TH NOVEMBER

10am – 5pm

Also on site is The Courtyard Tearoom



Tel. 01777 228215 or 07879 885379



Eagle Village Produce Association (VPA)

Spring gardening and produce show Saturday 9th April 2022

Calling all gardeners, growers, bakers and hen fanciers...

Eagle VPA is pleased to announce the date of *your* Spring show – its open to everyone in the village and beyond ...you don't need to be a Monty Don or a Prue Leith – let's just have some fun and celebrate the start of Spring together. We want to fill the village hall with your daffodils, narcissi (small daffodils), tulips and other spring flowers. Now is the perfect time to plant spring bulbs... you don't even need a garden as they grow well in pots. There are lots of varieties to buy at garden centres or online and they are not expensive. Top tips for planting in pots – make sure there is good drainage (add a bit of fine gravel or broken up old pot pieces to the compost) and stand your pots outside on 'pot stands' or bits of wood, anything really just to keep the bottom of the pot off the ground so water can drain out – bulbs don't like getting cold and soggy over winter. You can also plant bulbs in two or three layers in the same pot – just make sure none of the bulbs are touching each other and make sure you plant them at least as deep as the bulb is high. Please use peat-free compost as it is so much better for wildlife, nature and the climate.

There are lots of different categories to enter in the show and these will be published in Eagle Eye nearer the time – for now just have fun choosing your bulbs and get planting...and why not get your kids or grandkids to plant a pot of their own bulbs – young entries always welcome. And there will be a children's art category.

There will be a chance to enter any spring veg you have grown – now is a great time to plant hardy broad beans and its not too late to get plugs in of spring greens, or try planting some salad leaves under cover in the new year.

The show will be the week before Easter so there will be seasonal baking categories to enter. Its not all just chocolate nests and mini eggs...there will be an 'eggstranordinary' category for those of you who keep chickens, its no yoke this, so get cracking!

Save the date and start saving...its 30p to enter an item into the show but there are big cash prizes up for grabs, do well and you could be going home with enough for a Cream Egg from the village shop.



BIN COLLECTION DATES 2021/22



- Please ensure your bins are out by 7.30am on collection day
- To check what can go into each bin please refer to the A-Z recycling guide (www.n-kesteven.gov.uk/recycling)

North Kesteven
DISTRICT COUNCIL

WEDNESDAY

	Black Bin		Green-Lidded Bin		Purple-Lidded Bin	
2021	September	8	September	15		
	September	22			September	29
	October	6	October	13		
	October	20			October	27
	November	3	November	10		
	November	17			November	24
	December	1	December	8		
	December	15			December	22
	December	29				
2022			January	5		
	January	12			January	19
	January	26	February	2		
	February	9			February	16
	February	23	March	2		
	March	9			March	16
	March	23	March	30		

EAGLE YOUTH CLUB

IS COMING BACK

Starting again in January

NEW registration forms need to be filled in please on first attendance

Changing to the first Tuesday of the month, 5:30pm - 7pm, dates for you to note are:

4 th Jan	5 th July
1 st Feb	Aug Closed
1 st Mar	6 th Sept
5 th Apr	4 th Oct
3 rd May	1 st Nov
7 th Jun	6 th Dec

50p entry, tuck shop (sweets and drinks)

Community yoga practice.

Eagle Stragglers winter training now takes place in the form of a yoga practice in the village hall, every week on Wednesday at 7pm. No need to book, just turn up, £1 a session to cover the cost of the hall. You don't need any equipment but if you have a mat and blocks or a cushion please bring them.

All abilities are welcome, the worse your flexibility the more you will get from the session. Practice will be in the form of a hatha/vinyasa style class with some breath work and relaxation.

For more information check the Eagle Stragglers Facebook page, or just come along and see if you like it.

I look forward to seeing you there -

Fay Laluk.

EAGLE VILLAGE HALL 200 CLUB

SEPTEMBER

<u>NUMBER</u>	<u>NAME</u>	<u>AMOUNT</u>
198	MISS R POPPLEWELL	£100.00
177	MR K PROCTER	£50.00
20	MR & MRS HAMILTON	£50.00
91	MR & MRS BOWER	£20.00
24	MR R ADKIN	£20.00
3	MR J ANDERSON	£20.00
100	MR B RIDOUT	£10.00
15	MR & MRS RICHARDS	£10.00
32	MISS G COMPTON	£10.00
167	MISS K SHILLITTO	£10.00

OCTOBER

<u>NUMBER</u>	<u>NAME</u>	<u>AMOUNT</u>
81	MRS W COE	£100.00
93	MICHAEL EVANS	£50.00
38	MRS J BREWER	£50.00
184	MRS J COLLINS	£20.00
14	MRS S DINSDALE	£20.00
66	MR J BUTLER	£20.00
40	MRS L BELSHAW	£10.00
119	MR N WALLIS	£10.00
140	MISS K CHENNELLS	£10.00
118	MR R CLIFTON	£10.00

Useful phone numbers, email addresses and websites

NEIGHBOURHOOD POLICING

Sgt Kenneth Whyte your Community Beat Sergeant, North Hykeham Police
kenneth.whyte@lincs.pnn.police.uk

Hykeham Rural Villages Email : EMAIL: hykehamrural.npt@lincs.pnn.police.uk

Facebook : <https://www.facebook.com/HykehamPolice>

@HykehamNPT

Community Beat manager PC Mark Wood 07973 846976

PCSO Sarah Lingard 07973 842 364

PCSO Jo Mackie 07973 845 791

Report Potholes 01522 782070

<http://www.lincolnshire.gov.uk/faultreporting> 01522 782070

Report Litter 01529 414155

Adult Concern 01522 782151

Report fly tipping

<https://www.n-kesteven.gov.uk/residents/waste-recycling-and-environment/report-or-request-a-waste-service/>

Non urgent police and medical

Health 111 Police 101

Transport and Travel

Call Connect 0845 234 33 44 or 01522 553143

8.30am - 7pm Weekdays and to 5pm Saturdays

Dial a ride 01522 544983 Disabled door to door

Car-sharing www.lincshare.co.uk

Trains www.thetrainline.com

Roadworks

roadworks@lincolnshire.gov.uk

To receive info on twitter #lincscs_roads

Report **illegal parking** 01522 511142 or email

ParkingServices@lincolnshire.gov.uk

Parish Council website

<https://eagle-swinethorpe.parish.lincolnshire.gov.uk/>

Lock Matters

Small, Friendly, Mobile Locksmiths

Lock Openings

Locks Fitted

UPVC Door Specialist

Call Ian on 01522 681697 or

mobile 07949 293134

8 Tacitus Way North Hykeham LN6 9ZE



For a hassle free
service by a workshop
that comes to you



@MobileCamperCare

Professional, local mobile workshop, caring for your
Motorhome, Caravan or Camper at your home, in storage
or on-site.

* or if you're thinking of buying a van we also offer
Pre-Purchase Inspection allowing you to buy with confidence.

Telephone (01522) 716920 Mobile (07864) 630767

Email mobilecampercare@gmail.com



Little bot bots

child minding



Ofsted registered childminder, offering a home from home day-care service in Eagle with spaces available now.

Please ring or email Victoria to discuss requirements or to arrange a visit.

Tel: 07789 010452

Email: Victoria@littlebotbots.co.uk

Address: Eagle, Lincolnshire

Scouts



27th Lincoln
Thorpe-on-the-Hill

Meet weekly in Thorpe-on-the-hill

Cubs meet on a Tuesday
Beavers & Scouts on a Thursday
All 3 sections are full, and we are
in urgent need of adult
volunteers.

If you could spare an evening
once a week during term time and
would like to know more, please
contact

Fran Firth 07952 480708



Swinderby Pre-School



A local, friendly pre-school playgroup run by dedicated, qualified and experienced staff. Ofsted registered & inspected, providing quality care & education to children aged 2 to 5 years (government funding available for those eligible).

Opening times (term time only):

Monday: 8am - 12.05pm

Tuesday: 8am - 3.05pm

Wednesday: 8am - 3.05pm

Thursday: 8am - 3.05pm

Friday: 8am - 12.05pm

*This includes breakfast club 8am-9am and
early drop off 8.30am-9am, subject to
minimum numbers.*

For more information, please contact us on
01522 869362 or email us @
swinderbyppg@googlemail.com



EAGLE & SWINETHORPE PARISH COUNCIL

Eagle Parish Council

Two sets of minutes have been approved since the last edition of the Eagle Eye for the 31st August and 28th September. A full copy of the minutes can be found on the Parish Council website.

[Homepage – Eagle and Swinethorpe Parish Council
\(lincolnshire.gov.uk\)](http://lincolnshire.gov.uk)

The parish council can be contacted either by email at –

parishclerk@eaglevillage.co.uk or by phone – 01522 868936

The dates of the next parish council meetings are 7:30pm on
21st December 2021, 25th January 2022

The Parish Council has one vacancy, if you are interested in becoming a Parish Councillor or would like some more information, please contact The Clerk or any of the Parish Councillors.

Policies

The following policies were adopted –

Social Media

Freedom of Information Publication Scheme

Communications Policy.

Eagle House Care Home

Public representation was made raising concerns about the residents at the Home.

Names and contact details for the manager and director of the Home were made available so that anyone with concerns going forwards could raise them directly:

Kiri Abrams, Manager

kiri@hatzfeld.co.uk 07704425760 or 01522 457999

John Weldrick, Director johnweldrick@outlook.com

General Information

The External Audit report had been received back from PKF Littlejohn – no issues had been raised.

The parish council renewed its insurance policy, changing to BHIB this year, saving over £1000.

The Parish Council would like to get a team of volunteers together to refurbish the kitchen and toilet block.

So, if you have skills in project management, filling in grant applications, are a local tradesman or are an enthusiastic volunteer that would like to get involved in a community project, please contact the parish clerk, we would love to hear from you.

Rachel Popplewell

Parish Clerk

Would your next event benefit from a hot-drinks facility?



Coffee61 is a non-profit organisation. All monies going back into the community locally and beyond, helping food bank, 'Butterflies' (pamper and friendship for lonely ladies), Betel (drug rehab), 'Night-light' (supporting mental health cafe's) and Alive Church's building fund.

We serve ethically sourced, fair-trade, locally roasted coffee from 'Seven Districts', Lincoln. Plus many other hot/cold drinks and treats.

Coffee61 is a brilliantly converted horse-box with the top 'Food Safety' rating of 5!! (you may have seen us parked up in the village). Contact Ray or Ange on 07977120153 for any further details.

call CONNECT

CALL. CLICK. CONNECT

YOUR FLEXIBLE BUS SERVICE

Free to Register

Simply call us or go online to receive your membership number. It's that easy.

Book Your Journey

Give your membership number and journey details to our booking agent and we'll do the rest. You can also request your journey online 24 hrs a day.

Hop on the CallConnect Bus

Pay your fare, show your saver ticket or concessionary bus pass and enjoy the journey!

0345 234 3344 - LINCOLNSHIRE

0345 263 8153 - STAMFORD AREA

LINCSBUS.INFO



Service operates:
Monday - Friday 7am - 7pm
Saturday 7:30am - 6:30pm

Lincolnshire
LOCAL GOV. UNITS
Working for a better future

48 - Lincoln to Witham St Hughs

Monday to Saturday

Lincoln Bus Station, Stand N	06:40	09:00	11:00	13:00	15:00	17:00
Lincoln Debenhams	06:44	09:03	11:03	13:03	15:03	17:03
Lincoln, Valentine Retail Park	06:46	09:06	11:06	13:06	15:06	17:06
North Hykeham, Asda Layby	06:52	09:20	11:20	13:20	15:20	17:20
North Hykeham Station Cross roads	06:55	09:22	11:22	13:22	15:22	17:22
North Hykeham Pennells	06:58	09:25	11:25	13:25	15:25	17:25
Thorpe on the Hill, Post Office	07:02	09:30	11:30	13:30	15:30	17:30
Whisby, Thorpe Rd	07:06	09:34	-	13:34	-	17:34
Eagle Moor, Telephone box	07:09	09:36	-	13:36	-	17:36
Eagle, Primary School	07:11	09:38	-	13:38	-	17:38
North Scarle, Eyres Lane	07:17	09:43	-	13:43	-	17:43
Swinderby, Railway Station	07:22	09:48	-	13:48	-	17:48
Swinderby, The Plough	07:25	09:53	-	13:53	-	17:53
Witham St Hughs, Greenfinch Cres	07:35	10:03	11:43	14:03	15:43	18:03
Witham St Hughs, Juniper Way	07:38	-	-	-	-	-
Witham St Hughs, Juniper Way	07:40	-	-	-	-	-
Witham St Hughs, Greenfinch Cres	07:44	10:03	11:43	14:03	15:43	18:03
Swinderby, The Plough	-	-	11:52	-	15:52	-
Swinderby, Railway Station	-	-	11:57	-	15:57	-
North Scarle, High Street	-	-	12:02	-	16:02	-
Eagle, Primary School	-	-	12:07	-	16:07	-
Eagle Moor, Telephone box	-	-	12:09	-	16:09	-
Whisby, Thorpe Rd	-	-	12:11	-	16:11	-
Thorpe on the Hill, Post Office	07:50	10:15	12:15	14:15	16:15	18:15
Pennells	07:57	10:19	12:19	14:19	16:19	18:19
North Hykeham Station Cross roads	08:00	10:22	12:22	14:22	16:22	18:22
North Hykeham, Asda layby	08:03	10:25	12:25	14:25	16:25	18:25
Lincoln, Valentine Retail Park	08:23	10:39	12:39	14:39	16:39	18:39
Lincoln Bus Station, Stand N	08:35	10:50	12:50	14:50	15:50	18:50

Wright Foot Care

Richard Wright TCFCP
Foot Health Practitioner

Start on the
WRIGHT
foot



Fully Qualified & Insured
DBS Checked

Treatments include:

Nail Trimming • Thickened Nails • Verrucas • Corns • Callus • Cracked Nails
Ingrown Toe Nails • Athletes Foot • Fungal Nail • Diabetic Foot Care

Free Phone Consultation

07366 395 307

www.wrightfootcare

 [@wrightfootcare](https://www.facebook.com/wrightfootcare)

Appointments:
Monday - Saturday
In the comfort
of your own home

 **ncfe**

Mobile Foot Health Practitioner



- Nail trimming
- Corn removal
- Callus reduction
- Home visits
- Routine foot care
- Diabetic foot care
- Fungal infections
- Cracked heels
- Ingrown toenails
- Thick nails reduced



Foot care in the comfort of your own home!

Ray Hotchin DipCFHP

07591 653995

www.rayhotchinfootcare.co.uk



Wet

or Dry Grooms, Clipping, De-Shedding, Claw Clipping, Kitten Introductory Sessions, Pick Up & Drop Off Service and so much more!

Grooms starting at £45

Thomas' Professional Cat Grooming is the feline department of Thomas'

Professional Dog Grooming

Contact us today to book your appointment or more information!

(01636 626411 (07568 990991

: www.thomasdoggrooming.com

Lucas Court, Fenton, Newark, NG23 5DE

Full Grooms, Clipping, De-Shedding,
Wash & Blow Dry, Nail Trimming,
Parasite Removal,

Puppy Introductory Sessions,
Pick Up & Drop Off Service and so much more!

Full Grooms starting at £35

Wash & Blow Dry starting at £20

Contact us today to book your appointment or more information!

(01636 626411 (07568 990991

: www.thomasdoggrooming.com

LJM
HOMECARE
LINCOLN

You can't help getting older,
but you don't have to get old.



We take the time to get to know you and understand your needs.

- ✓ COVID-19 Framework
- ✓ Client Satisfaction
- ✓ Affordability
- ✓ Experience
- ✓ Reliability
- ✓ Quality

info@ljmcare.com

01522 700400

www.ljmcare.com

Body and Sole

The Country Clinic with the Calming Air

Are you feeling stressed? Do you find it hard to switch off? Are you struggling to sleep?



Either a Therapeutic **NO HANDS**® massage or a Reflexology session may be able to help.

Call Sally Smith on the number below or visit www.sallysmith.co.uk to find out more

“My feet are killing me”

If this sounds like you then call to book your appointment NOW!

Pain-free feet are just a phone call away. Most foot problems can be treated quickly and easily, there’s no need to suffer in silence.

Sally Smith

Chiropodist, Reflexologist, NO HANDS® massage Therapist

Body and Sole, Lime Grove Clinic, High St, Harby, Newark, Notts NG23 7EB

01522 704294 or 07974 580 262

Reflexology – helping you to relax and rebalance

Reflexology is a non-intrusive complementary therapy based on the theory that different points on the feet and hands correspond with different organs and systems in the body. Reflexologists work on these reflexes to help re-balance the vital energy in the body, which in turn improves the general feeling of wellbeing, and aids deeper relaxation.

Reflexology may also provide relief from a wide range of acute and chronic conditions, complementing allopathic medicinal approaches.

Using gentle massaging techniques on feet and hands, I have had success in helping my clients with a range of conditions including menopausal symptoms, spinal injuries, sleeping difficulties, autoimmune diseases and arthritic pain.



I have a Centralia Reflexology Mastership (incorporating Agored Cymru Units at Level 5) in Clinical Reflexology and belong to the Association of Reflexologists.

If you would like to find out more or come for treatments, contact me, Jane, on 01522 869094 or 07976 638822 or email jane@balancedreflex.com. My treatment rooms are located in Eagle, Lincoln. www.balancedreflex.com @BalancedReflex

**INDEPENDENT FAMILY
OPTICIAN
FRIENDLY PROFESSIONAL
EYECARE**

**j:d
opticians**

**17/19, Appletongate,
Newark**

- Private and NHS Work
- Eye Examinations available 6 days a week
- Childrens Eyecare
- Home visits available for the housebound
- Contact lens service
- Same day repair service
- On site glazing for most prescriptions
- Large range of frame styles on display
- Expert advice always available

01636 611133
(opposite the Palace Theatre)



SING DANCE ACT
Come and join in the fun!!

Saturdays 10am-12.30pm
at
Swinderby Village Hall

Musical Theatre classes taught by friendly
qualified teachers

BALLET TAP JAZZ

Classes on Tuesdays from 4pm
at
Swinderby Village Hall
Ages 3-18

For more information please call:
Danielle – 01522 696100
or Carol – 01522 791898
Visit – www.dancelincoln.co.uk

Information from Lincolnshire County Council : **Highways contact details and useful information**

A few things we don't deal with:

We look after the majority of issues within the highway but there are some that we don't:

Foul sewers and water leaks

Anglian Water www.anglianwater.co.uk

Severn Trent Water www.stwater.co.uk

Mud on the Road

Lincolnshire Police **Call 101**

Street name plates, dog fouling, litter, street cleansing and fly tipping on the Highway

City of Lincoln Council www.lincoln.gov.uk

Boston Borough Council www.boston.gov.uk

East Lindsey District Council www.e-lindsey.gov.uk

North Kesteven District Council www.n-kesteven.gov.uk

South Kesteven District Council www.southkesteven.gov.uk

South Holland District Council www.sholland.gov.uk

West Lindsey District Council www.west-lindsey.gov.uk

To report a fault

A fault is something wrong with the highway network that requires fixing.

Typical examples are potholes, street lights that are not working and broken or missing drain covers. The best way to report a fault is to log it on the web portal

at www.lincolnshire.gov.uk/faultreporting

To enquire about highways services

Typical examples include when will the road improvements in my area be carried out.

There is lots of useful information on our web pages at www.lincolnshire.gov.uk/transport-and-roads

If you can't find what you are looking for or the enquiry is about something very specific please email us at

cschighways@lincolnshire.gov.uk

Keep up to date with roadworks

Visit www.roadworks.org to find up to date information about all roadworks carried out by Lincolnshire County Council and utilities such as Anglian Water.

To talk to us

Our Customer Service Centre number is 01522 782070

Our Service Centre Advisors can help with a wide range of questions and can look up what action has been taken with reported faults and enquiries between 08:00-8:00 Monday to Friday.

If you have a highway emergency outside of these times please call Lincolnshire Police on 101

Learn more about services we provide

To find information on all our services for example grass cutting, street lighting, grit bins, patching and surface dressing visit www.lincolnshire.gov.uk/transport-androads/highways-maintenance/

You can also view our programme of works for the current financial year and download our publications and policies.

Follow us on Twitter

You can follow us on Twitter. We regularly tweet roadworks updates, incident details and in the winter when we are gritting.

[@LincsCC_roads](https://twitter.com/LincsCC_roads)

Your local trusted Independent Mortgage Advisor

Established in Lincoln for
nearly 30 years, specialising in

- MORTGAGES
- PERSONAL PROTECTION
- REMORTGAGES
- PROPERTY INSURANCE
- BUY TO LET
- EQUITY RELEASES

Call today and arrange a meeting in our
office in the Bailgate or at your home



FINANCIAL SERVICES

10 Gordon Road
Bailgate
Lincoln LN1 3AJ

01522 511177

SW Financial Services are authorised and regulated by the Financial Conduct Authority.
Your home may be repossessed if you do not keep up with your mortgage repayments.

BUTCHER & BLOCK

YOUR ONLINE
LINCOLNSHIRE
BUTCHER
EST. 2020

 Find us on
Facebook

 Instagram

WWW.BUTCHERANDBLOCK.CO.UK



Michael Waterton

Cavendish, 12 Church Lane, Eagle LN6 9DJ

Tel: 07765 910281

Mick the Stitch,

a Saville Row-trained tailor, now working from home is able to undertake all types of alterations.

✂ Suits

✂ Top Coats

✂ New Zips

✂ Wedding and Bridesmaid dresses, boys' waistcoats



✂ Jackets, Trousers, Vests

✂ Leather and Motorbike gear

✂ School Uniforms

✂ Mother of the Bride outfits



FARM SHOP

Open daily 9-5 (Sun 10-4)
Everyday essentials, estate produce,
locally sourced Hambletons meat
and all your Farm Shop favourites.



CHRISTMAS AT DODDINGTON

23 November - 24 December (Wed-Sun)
Explore magical secret gardens this
Christmas as our Elizabethan Hall is once
again transformed for the festive period.
Booking essential.



COUNTRY CLOTHING

Open daily 9.30-5 (Sun 10-4)
From countryside walks to al fresco
reunions, we've got you covered for the
Great British outdoors whatever the
weather.

EXPLORE • EAT • SHOP • STAY

DODDINGTONHALL.COM

01522 694308 • info@doddingtonhall.com • Lincoln LN6 4RU

NOTICE FROM LINCOLNSHIRE HIGHWAYS DEPT: **REPORTING HIGHWAYS ISSUES**

All highways issues should be reported via www.lincolnshire.gov.uk/faultreporting. The online system is the quickest and easiest way to report problems and is available 24/7.

However, you can also raise matters via customer services (by calling 01522 782070 or emailing cschighways@lincolnshire.gov.uk) or by contacting your local county councillor.

While we realise that you may prefer to speak to the local highways officer directly, we need them out dealing with highways issues not in the office on the phone.

For more complex, ongoing issues, you can request an annual meeting with your local member and the highways team.

In addition, my support councillor, Cllr Perraton-Williams, and I are currently committed to visiting each parish and town council with the local highways team.

I can assure you that all issues reported will be dealt with.

Kind regards CLLR RICHARD DAVIES

EXECUTIVE COUNCILLOR FOR HIGHWAYS, TRANSPORT AND IT



Powell Legal Consultancy

Providing solutions, cutting costs

Wills and Powers of Attorney



Local personal service
Competitive fees
Legally qualified Will Writer (LLB Dip LP)
FSWW

Free home visits

call: 01522 306326/0778 658

5728

Email:

liz@powelllegalconsultancy.co.uk

www.powelllegalconsultancy.co.uk

Member of Society of Will Writers –

Fully Insured

Old Chandlery Apartments

Do you have friends or relatives visiting?

Not enough bedrooms or sofa-space?

We can solve your problem...

We offer a bed and breakfast solution combined
with the luxury of a small serviced apartment.

Visitors can relax and cater for themselves
(Continental / English breakfast ingredients included)
in a quiet, rural setting - plenty of off-road parking.

Please call Jane on **01522 868123** for
details, prices and information.

Old Chandlery Apartments, Morton, Swinderby.
jane@ocapartments.co.uk www.ocapartments.co.uk



High Street
Collingham
Newark NG23 7LB
Tel: 01636 893038
Email: collingham.pharmacy@nhs.net

CHRISTMAS 2021

Saturday 25 December – **CLOSED**
Monday 27 December – **CLOSED**
Tuesday 28 December – **CLOSED**
Saturday 1 January – **CLOSED**
Monday 3 January 2022 – **CLOSED**

(Normal opening hours all other days. Closed between 1.00 pm and 2.00 pm every day)

The Collingham Pharmacy team would like to wish everyone a very Merry Christmas and Happy New Year.

**When this Pharmacy is closed, if you urgently need medical help or advice but it's not a life-threatening situation contact NHS 111.
Information can also be accessed at www.nhs.uk**

Website: www.collinghammedicalcentre.co.uk

EAGLE VILLAGE SHOP & POST OFFICE

Now stocking local produce & offering an ordering service for:

- *Meat / Pies from the Lakeside Butcher
- *Fresh bread / pastries from The Welbeck Bakehouse
- *Cakes and bread from Curtis & The Wilcox Bakery
- *Fresh fruit & vegetables from Mark Cheatham
- *Locally made cards, gifts, honey, fresh sandwiches, alcohol and much more!

Post Office services incl: Free cash withdrawals & deposits / pay in cheques

By supporting your local shop you are supporting other local businesses too!

OPENING HOURS *CLOSED FOR LUNCHEVERY DAY 1-2PM*****

MONDAY	8:30AM – 5:30PM	(POST OFFICE 9AM – 5:30PM)
TUESDAY	8:30AM – 5:30PM	(POST OFFICE 9AM – 5:30PM)
WEDNESDAY	8:30AM – 1PM	(POST OFFICE 9AM – 1PM)
THURSDAY	8:30AM – 5:30PM	(POST OFFICE 9AM – 5:30PM)
FRIDAY	8:30AM – 5:30PM	(POST OFFICE 9AM – 5:30PM)
SATURDAY	8:00AM – 1PM	(POST OFFICE 9AM – 12:30PM)
SUNDAY	- CLOSED	



Are you a Silver Fox Globe Trotter or want to improve your lifestyle?

LATER LIFE LENDING enables you to enjoy your money
that is tied up in your property, for the over 55's

Do you want to?

- Enhancing your Lifestyle?
- Go on a Trip of a Lifetime?
- Repay your interest only mortgage?
- Buy a new home or buy a holiday home?
- New Car or Campervan?
- Home Improvements, New Kitchen or add a Conservatory?
- Help your Children or Grandchildren get on the property ladder? or
- maybe help with University fees.
- Debt Consolidation
- Annual draw down to enhance your pension income
- RETIRE!!

This all comes with...

- No Monthly Commitment
- The option to pay interest.
- Inheritance Protection
- You always own your own home
- Fix interest rate for life, with rates as low as 2.35%
- Whole of the Market Advice
- No obligation meeting and quotation from highly experience Advisers - who are members of the Equity Release Council.



Mandy Belt
CeMap, CeRER

**38 Years in the
Financial Services**

**We are a local company serving Local people,
we pride ourselves in always offering excellence in customer service;
to arrange a meeting with Mandy**

**Call 03455 443 499 or
e: info@yourmortgagehub.co.uk**

Approval Number:
Sol7670

Your home may be at risk if you do not keep up with your
repayments on your mortgage or any other debt secured on it.



Approval Number: Sol7771



Your Mortgage Hub are a Local company helping local people

Whole of Market Lending for...

- First Time Buyers
- Re-Mortgages
- Home Movers
- Help to Buy Specialists
- Forces Help to Buy – Approved and recommended By the MoD
- Buy To Let
- Retirement Mortgages & Equity Release
- Shared Ownership
- Debt Consolidation
- Home improvement Loans
- Protection & insurance advice for you and your property

We pride ourselves in always offering the very best advice and excellence in customers service to arrange a no obligation meeting with **Jenny Holt** who is your local adviser.....

Call: Jenny Holt on 0345 5443499 or Mobile number 07720976688

Email: jenny@yourmortgagehub.co.uk



Your home may be at risk if you do not keep up with your repayments on your mortgage or any other debt secured on it

Think carefully before securing other debts against your home. Your home may be repossessed if you do not keep up repayments on your mortgage

EAGLE VILLAGE HALL - HIRE CHARGES

24 September 2021

VILLAGE RESIDENTS

Sunday to Thursday £8.00 per hour

NON-RESIDENTS

Sunday to Thursday £10.00 per hour

...

VILLAGE RESIDENTS

Fridays & Saturdays - Daytime up to 6pm £8.00 per hour

Evenings £13.00 per hour

NON-RESIDENTS

Fridays & Saturdays - Daytime up to 6pm £10.00 per hour

Evenings £13.00 per hour

(a £100 refundable deposit is required for evening bookings)

...

FURNITURE HIRE - Residents only (per day)

Large Tables £2.00 each, Small Tables £1.50 each, Chairs £1.00 each

...

Set-up Time (before 6pm) - Charged at day rates

Minimum booking period 1 hour - Bookings must be for the total time the hall is in use. (Please include preparation & clear up time.)

Eagle Village Hall are **LICENSED PREMISES** for the consumption of Alcohol. The Village Hall Committee is the licensee of these premises and you will need permission from the committee to sell or supply alcohol, our licence regulations must be observed & costs may apply.

Please contact us for details.

Please contact bookings secretary for details:

Jackie Jinks 01522 868418

THE EAGLE EYE

Editor Jane Wallis, 15 Church Lane, Eagle LN6 9DJ
01522 869094 janewallis41@btinternet.com

Treasurer Anne Rogers, 4 Church Lane, Eagle, LN6 9DJ
Anne.horsman@outlook.com 01522 869996

Distribution Mike Waterton 01522 869876

Advertising Rates (6 issues)

Full Page	£90
Half page	£50
Quarter page	£30
One-off advertisements	Full page £20, Half page £14, Quarter page £10
Family announcements	Free
Diary entries	Free

Publication date 1st week in February, April, June, August, October, December

The views expressed in the magazine represent those of the individual contributors and not necessarily those of the Editor. Readers are advised to take their own precautions before entering into any agreement with advertisers to obtain goods or services.

Village Facebook Pages

‘Eagle Local Information and What’s On in our Village’ - for posting information re events in the village, weekly groups/ clubs, useful numbers, suspicious activity etc.

‘Eagle Sales and Wants’ For those looking to sell or gift items and others who are looking for that specific something.

‘Eagle & Swinethorpe Parish Council’ for notices from the Parish Council

‘Friends Of Eagle School - FOES’ for information on what FOES are up to.



USEFUL TELEPHONE NUMBERS

Collingham Medical Centre	General Enquiries	01636 892156
Collingham Pharmacy		01636 893038
Community Beat Team	See inside	Page 6
Eagle Bowls Club	Ted Coulson	704340
Eagle Indoor Bowls	Roger Bishop	869557
Eagle Post Office		868212
Eagle Primary School		868354
Eagle Churchwardens	Sue and Chris Stiles	869296
OAP Party Fund	Roy Bell	868567
Parish Clerk	Rachel Popplewell	Parishclerk@eaglevillage.co.uk
District Councillor NKDC	Cllr Sally Appleby*	07714 271450
Playing Field Committee	Parishclerk@eaglevillage.co.uk	
Village Hall Bookings	Jackie Jinks	868418
Village Hall Committee	Simon Spear	869490
Village Produce Ass'n	Clare Evans	07825 160985
Rev. Andrew Vaughan	01522 687242 or	07702 468549
200 Club	Rodney Fagg	869123
Fellowship Lunch	Jean Roberts	868797

*Cllr Appleby's email address is cldr_sally_appleby@n-kesteven.gov.uk

If you would like your telephone number added to this list or any of the above are incorrect please contact the Editor on 869094 or janewallis41@btinternet.com

EAGLE & SWINETHORPE NEIGHBOURHOOD WATCH CO-ORDINATORS

Jon Faiers , Fallowfields, Doddington Road, Whisby	694352
Sue Ross , 7 Kestrel Rise, Eagle	868411

Publisher accepts no responsibility for the validity of any of the advertisements.
Printed by Pott Morton Printers, Lincoln