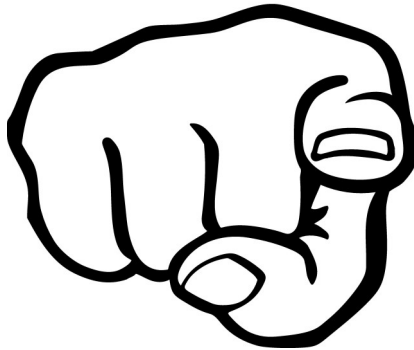


Issue 352

Aug/Sept 2020



Do you still want to receive a
paper copy of the Eagle Eye?
Please read Page 19 and
respond.

The next issue of the Eagle Eye will appear at the beginning of September
Please send in your contributions before the copy deadline - **Friday Sept 25th**

Seasonal Flu Vaccination Campaign 2020

We will be holding 3 Saturday morning flu clinics on

Saturday 26 September 2020, from 8.00 am – 12.30 pm
Saturday 10 October 2020, from 8.00 am – 12.30 pm
Saturday 31 October 2020, from 8.00 am – 12.30 pm

We are aiming to vaccinate 100% of eligible patients this year, as defined by NHS guidelines. We may be able to open our offer beyond those eligible after 31 October 2020 (dependent on stocks/uptake).

Due to COVID social distancing measures, our Saturday clinics will focus on patients who are able to walk and stand unaided for up to 20 minutes. No seating available. Vaccinations will be administered with patients stood up and a strict one-way system through the Practice will be in operation. Face masks must be worn. Please attend alone, unless a family member is also booked for flu vaccination.

For patients with mobility issues we will be holding weekday flu clinics. Our PCAs will triage at the time of booking.

Housebound patients will be contacted by the practice in due course.

These are appointment only clinics. Appointments will be available to book from August. Please contact the number below or ask at Reception.

For Appointments telephone: 01636 892156 8.00am – 6.15pm

Website: www.collinghammedicalcentre.co.uk

E-Mail: collingham.medicalcentre@nhs.net

PRESCRIPTION ROTA

Betty Spackman	29-Jul	869094
Lynda Williams	05-Aug	869225
Rodney Fagg	12-Aug	869123
Angela Stewart	19-Aug	07969 428167
Jane Wallis	26-Aug	869676
Clare Kelly	02-Sep	07847 966803
Jane Wallis	09-Sep	869094
Lynda Williams	16-Sep	869225
Rodney Fagg	23-Sep	869123
Mari Dawson	30-Sep	868310 (may change)

WHAT'S ON for the remainder of 2020.



SEPTEMBER

VPA Autumn Show

Eagle Village Hall

Virtual Collingham Show

www.thecollinghamshow.co.uk

RAY BREWER 1931-2020



John Raymond Brewer, "Ray", was born in Eagle on 27th of September 1931. After several admissions to hospital over the last year he died peacefully at home on the 8th of July. He had such a good memory and loved to share with people the stories of his life growing up in Eagle where he lived for 71 years before moving to North Scarle.

Dad was born at Fir Tree house, Eagle which was located on the side of Church Lane, later demolished. He described it as an old cold house. His father sadly died when my dad was 7 and didn't talk of him much only that he always wore a bow tie when out. He left dad's mother a widow for 50 years. Dad told me when he died both him and his sister were sent to stay with Aunties in town. Dad's mum was from Bicker and was a school teacher at Eagle school from 1919 to 1925, she left when she got married as that was what happened then. She was also a dressmaker, making clothes for dad and his sister. She also made wedding dresses and later dresses for myself and my sister too.

He had several jobs in the village as "an old boy" which he enjoyed more than going to school to which he left when he was aged 14.

My favourite quote of his was " If you had no money then you had to stop at home. The only thing to do was to go out and earn some."

Dad joined the Reme division for national service for a couple of years in the 50's as a motor mechanic. He said it was the best years of his life, he told us of his time in Africa. His service number was the only number he could ever remember and would often recall it with "reporting for duty, sir!"

He met my mum at a dance in town and married her 6 months later. They were married for 56 years, mum still lives in Scarle. He also leaves 2 daughters, 5 grandchildren and 2 great grandchildren, who will all miss him dearly. His stories will be remembered by many and are archived for future reference. He had such passion about the village and it's just a real shame that he didn't get to see the Bomber Crash memorial which he was part of setting up. My own personal memories of him being such a loving and caring dad will stay in my heart forever.

RIP dad

All Saints Church, Eagle

At last we are able to welcome the general public back into Church, albeit in a different way. We shall hold our first service on –

Sunday 16th August at 10.30a.m. Holy Communion

Following that we hope to continue once a month with a service on the third Sunday which will bring the next one to **Sunday 20th September at 10.30a.m.**

Please read the piece by Rev. Andrew Vaughan for guidance. We look forward to meeting everyone again.

For Pastoral matters and Memorial Stones please contact the Churchwardens.

Best wishes to everyone and hope you keep well.

Jean Roberts

Opening our Churches for public worship

Dear all,

As you will know, from the beginning of July places of worship were allowed to resume public worship. The policy of the Diocese was that this was permissive and each parish was to work out its own timeline to re-opening.

Since the middle of July we have been undertaking the necessary risk assessments, looking at how we could practically return to public worship, but above all consulting our core congregations. Our feeling across the group was that re-opening was not just about permission, practical physical considerations, liturgical considerations; it had to be about the feelings of people.

To that end a decision was made to resume public worship in the middle of August. This was because many who are in a shielding category would have more freedom.

We will be holding our first public worship on **Sunday 16th August 2020 at 10.30am in Eagle**. The following week **23rd August at 10.30 we will be at Thorpe on the Hill**. Once we have reviewed the practicalities from these two services we will then look to resume services in North Scarle and Swinderby.

The routine going forward will be that there will be a communion service at 10.30am each Sunday going around the group. This will follow the following pattern

1st Sunday – North Scarle

2nd Sunday – Swinderby

3rd Sunday – Eagle

4th Sunday – Thorpe on the Hill

Obviously, there will be measures in place such as social distancing, increased hygiene, no singing, communion in one kind, no hand shaking. We will also be preparing a general communion service, which people can either print for themselves, or take home copies we will provide. We are not allowed to use books we have in church already. The services will be for those from each village, however, if there is a pastoral need to go to one of the other churches please let myself or a relevant Churchwarden know. We will also need to collect names and contact details for NHS Track & Trace. These details will be destroyed after 21 days.

As part of these measures the Church of England **strongly recommends the wearing of face masks/coverings**. We therefore ask that you wear a mask or covering while attending a service.

I am sorry this is a long explanation, but I wanted everyone to know the process we have taken to return to public worship. I am also exploring how to film the service, so that it can be shared on our North Scarle Facebook page for those unable to attend.

As ever

Andrew

Notes from Collingham Medical Centre (CMC) with the Patient Participation Group (PPG)

All support at CMC is initially via telephone triage; online booking of appointments suspended until 2021. Clinical triage by telephone enables the clinical team to keep all safe - supporting either by telephone or face-to-face through the appropriate entrance zone. RED, AMBER and GREEN zones are operating within the surgery to ensure distancing.

RED is for patients with symptoms of COVID who will be asked to wait in their car and a staff member in full PPE will come to them. The patient will be asked to put on a mask before a consultation in the RED room at the end of the doctors' corridor. The rooms will be deep cleaned after each use.

AMBER is for shielded high risk patients who are asked to wait in their own car before being shown to the AMBER room. This is so isolated patients can maintain their isolation bubble.

GREEN is for patients with non COVID symptoms who need to be seen by a practitioner after telephone triage. The waiting room is spaced to accommodate 6 patients only.

Pharmacy deliveries will continue for shielded patients until the end of June when CMC will review this in line with Government advice which is expected imminently. Those patients who are over 70 are being asked to consider alternative arrangements from July; it maybe that it is appropriate for the Pharmacy to set up a chargeable delivery service to those who wish to remain socially distant or for convenience.

The practice waits further guidance around whether a face covering should be worn in the surgery and there are measures in place (sneeze screens and distance marks in the Pharmacy and CMC reception) to help everyone reduce risks of transmission.

The meeting room is being used as a second dispensary until 2021 so that teams can work at a distance to maintain dispensing services on site.

Plans for the Saturday flu clinics are being put in place, provisionally for 26th Sept, 10th October and 31st October. Access will be strictly one-way with 2m spacing.

Eligible patients are being invited for pneumonia vaccinations now.

The telephone system is working well with 90% of calls being answered in one minute. The uptake for the NHS app is increasing and all are encouraged to download it.

The PPG have resumed meetings via Zoom. We have 2 vacancies and would love to hear from anyone who is interested. Please contact Linda on 07972 300346 or linda.dales@lindadales.co.uk

The PPG will be out and about to display updated posters so keep an eye on your local notice board.

The PPG welcome any feedback via email collinghamppg@gmail.com or please drop a note through the CMC letterbox marked FAO PPG

Notes taken at the end of June 2020

Useful phone numbers, email addresses and websites

NEIGHBOURHOOD POLICING

Sgt Kenneth Whyte your Community Beat Sergeant, North Hykeham Police
kenneth.whyte@lincs.pnn.police.uk

Hykeham Rural Villages Email : EMAIL: hykehamrural.npt@lincs.pnn.police.uk

Facebook : <https://www.facebook.com/HykehamPolice>

@HykehamNPT

Community Beat manager PC Mark Wood 07973 846976

PCSO Sarah Lingard 07973 842 364

Report Potholes 01522 782070

<http://www.lincolnshire.gov.uk/faultreporting> 01522 782070

Report Litter 01529 414155

Adult Concern 01522 782151

Report fly tipping

<https://www.n-kesteven.gov.uk/residents/waste-recycling-and-environment/report-or-request-a-waste-service/>

Non urgent police and medical

Health 111 Police 101

Transport and Travel

Call Connect 0845 234 33 44 or 01522 553143

8.30am - 7pm Weekdays and to 5pm Saturdays

Dial a ride 01522 544983 Disabled door to door

Car-sharing www.lincshare.co.uk

Trains www.thetrainline.com

Roadworks

roadworks@lincolnshire.gov.uk

To receive info on twitter #lincscs_roads

Report **illegal parking** 01522 511142 or email

ParkingServices@lincolnshire.gov.uk

Parish Council website www.eaglevillage.co.uk

Information from Lincolnshire County Council : **Highways contact details and useful information**

A few things we don't deal with:

We look after the majority of issues within the highway but there are some that we don't:

Foul sewers and water leaks

Anglian Water www.anglianwater.co.uk

Severn Trent Water www.stwater.co.uk

Mud on the Road

Lincolnshire Police **Call 101**

Street name plates, dog fouling, litter, street cleansing and fly tipping on the Highway

City of Lincoln Council www.lincoln.gov.uk

Boston Borough Council www.boston.gov.uk

East Lindsey District Council www.e-lindsey.gov.uk

North Kesteven District Council www.n-kesteven.gov.uk

South Kesteven District Council www.southkesteven.gov.uk

South Holland District Council www.sholland.gov.uk

West Lindsey District Council www.west-lindsey.gov.uk

To report a fault

A fault is something wrong with the highway network that requires fixing.

Typical examples are potholes, street lights that are not working and broken or missing drain covers. The best way to report a fault is to log it on the web portal

at www.lincolnshire.gov.uk/faultreporting

To enquire about highways services

Typical examples include when will the road improvements in my area be carried out.

There is lots of useful information on our web pages at www.lincolnshire.gov.uk/transport-and-roads

If you can't find what you are looking for or the enquiry is about something very specific please email us at

cschighways@lincolnshire.gov.uk

Keep up to date with roadworks

Visit www.roadworks.org to find up to date information about all roadworks carried out by Lincolnshire County Council and utilities such as Anglian Water.

To talk to us

Our Customer Service Centre number is 01522 782070

Our Service Centre Advisors can help with a wide range of questions and can look up what action has been taken with reported faults and enquiries between 08:00-8:00 Monday to Friday.

If you have a highway emergency outside of these times please call Lincolnshire Police on 101

Learn more about services we provide

To find information on all our services for example grass cutting, street lighting, grit bins, patching and surface dressing visit

www.lincolnshire.gov.uk/transport-androads/highways-maintenance/

You can also view our programme of works for the current financial year and download our publications and policies.

Follow us on Twitter

You can follow us on Twitter. We regularly tweet roadworks updates, incident details and in the winter when we are gritting.

[@LincsCC_roads](https://twitter.com/LincsCC_roads)

call CONNECT

CALL. CLICK. CONNECT

YOUR FLEXIBLE BUS SERVICE

Free to Register

Simply call us or go online to receive your membership number. It's that easy.

Book Your Journey

Give your membership number and journey details to our booking agent and we'll do the rest. You can also request your journey online 24 hrs a day.

Hop on the CallConnect Bus

Pay your fare, show your saver ticket or concessionary bus pass and enjoy the journey!

0345 234 3344 - LINCOLNSHIRE

0345 263 8153 - STAMFORD AREA

LINCSBUS.INFO



Service operates:
Monday - Friday 7am - 7pm
Saturday 7:30am - 6:30pm

Lincolnshire
LOCAL GOVERNMENT
Working for a better future

Monday to Saturday

Lincoln Bus Station, Stand N	06:40	09:00	11:00	13:00	15:00	17:00
Lincoln Debenhams	06:44	09:03	11:03	13:03	15:03	17:03
Lincoln, Valentine Retail Park	06:46	09:06	11:06	13:06	15:06	17:06
North Hykeham, Asda Layby	06:52	09:20	11:20	13:20	15:20	17:20
North Hykeham Station Cross roads	06:55	09:22	11:22	13:22	15:22	17:22
North Hykeham Pennells	06:58	09:25	11:25	13:25	15:25	17:25
Thorpe on the Hill, Post Office	07:02	09:30	11:30	13:30	15:30	17:30
Whisby, Thorpe Rd	07:06	09:34	-	13:34	-	17:34
Eagle Moor, Telephone box	07:09	09:36	-	13:36	-	17:36
Eagle, Primary School	07:11	09:38	-	13:38	-	17:38
North Scarle, Eyres Lane	07:17	09:43	-	13:43	-	17:43
Swinderby, Railway Station	07:22	09:48	-	13:48	-	17:48
Swinderby, The Plough	07:25	09:53	-	13:53	-	17:53
Witham St Hughs, Greenfinch Cres	07:35	10:03	11:43	14:03	15:43	18:03
Witham St Hughs, Juniper Way	07:38	-	-	-	-	-
Witham St Hughs, Juniper Way	07:40	-	-	-	-	-
Witham St Hughs, Greenfinch Cres	07:44	10:03	11:43	14:03	15:43	18:03
Swinderby, The Plough	-	-	11:52	-	15:52	-
Swinderby, Railway Station	-	-	11:57	-	15:57	-
North Scarle, High Street	-	-	12:02	-	16:02	-
Eagle, Primary School	-	-	12:07	-	16:07	-
Eagle Moor, Telephone box	-	-	12:09	-	16:09	-
Whisby, Thorpe Rd	-	-	12:11	-	16:11	-
Thorpe on the Hill, Post Office	07:50	10:15	12:15	14:15	16:15	18:15
Pennells	07:57	10:19	12:19	14:19	16:19	18:19
North Hykeham Station Cross roads	08:00	10:22	12:22	14:22	16:22	18:22
North Hykeham, Asda layby	08:03	10:25	12:25	14:25	16:25	18:25
Lincoln, Valentine Retail Park	08:23	10:39	12:39	14:39	16:39	18:39
Lincoln Bus Station, Stand N	08:35	10:50	12:50	14:50	15:50	18:50

NOTICE FROM LINCOLNSHIRE HIGHWAYS DEPT:
REPORTING HIGHWAYS ISSUES

All highways issues should be reported via www.lincolnshire.gov.uk/faultreporting. The online system is the quickest and easiest way to report problems and is available 24/7.

However, you can also raise matters via customer services (by calling 01522 782070 or emailing cschighways@lincolnshire.gov.uk) or by contacting your local county councillor.

While we realise that you may prefer to speak to the local highways officer directly, we need them out dealing with highways issues not in the office on the phone. For more complex, ongoing issues, you can request an annual meeting with your local member and the highways team.

In addition, my support councillor, Cllr Perraton-Williams, and I are currently committed to visiting each parish and town council with the local highways team.

I can assure you that all issues reported will be dealt with.

Kind regards CLLR RICHARD DAVIES

EXECUTIVE COUNCILLOR FOR HIGHWAYS, TRANSPORT AND IT

Editor's Note

...and so we continue to feel the effects of trying to manage the spread of Coronavirus. Everyone has adjustments to make, and nothing is quite the same. A sparkling piece of good news is that Nat and Paul have decided to remain in the Post Office, so along with Katie's indispensable help, some normality will remain.

Church services are slowly starting again (see notices), and The Struggler is open again, with measures in place to keep customers safe.

The Village Hall Committee is making arrangements to make the monthly 200 Club draws that have been prevented, so look out for some lucky windfalls coming your way.....

The Parish Council has continued to meet via online meeting facilities—if you need to participate in a meeting, contact the Clerk and she will guide you with what to do.

Hopefully by the next issue there will be more to put in the What's On section—we are definitely missing school and FOES events as well as all the fundraisers that we like to go to.

As with everything else, the Eagle Eye is going to have to adjust—hence the plea for input to questions about its distribution and delivery. Thank you in advance for your responses.

Lastly I would like to thank Anne Rogers for stepping in and taking up the reins of Martin's Eagle Eye treasurer responsibilities, and to the distributors for returning to their delivery roles.

Best Wishes

Jane

The Collingham Show 2020

This probably won't come as a complete surprise, but unfortunately, this year's Collingham Show will not be possible in its usual format, so instead we're going online for **The "Virtual" Collingham Show.**

We'd love you to take part in a reduced number of competitions.

From decorating the outside of your house, to growing the longest carrot or runner bean.

Maybe you'd like to decorate a cake or bake a loaf of bread. From flower arrangements to craft creations we hope they'll be something for you to get involved with.

If photography is more your thing, our theme this year is **"Every cloud has a silver lining"**

We're also planning a **vintage vehicle/tractor run** through the village to give us all something special to look forward to.

The date remains the same, **Saturday 19th September** so please pop it in the diary.

For regular updates and details of the competition categories please check our new website

www.thecollinghamshow.co.uk

and look out for the posters in local shops and businesses. And a reminder, we'll be back next year with an even bigger and better **Collingham Show on Saturday 18th September 2021**



EAGLE & SWINETHORPE PARISH COUNCIL

Three sets of minutes have been agreed since the last edition of the Eagle Eye for the 28th April, 26th May & 23rd June 2020. A full copy of the minutes can be found on the Parish Council website.

www.eaglevillage.co.uk

The parish clerk can be contacted by either email at -

parishclerk@eaglevillage.co.uk or by phone - 01522 868936

The dates for the next parish council meetings are -

Tuesday 25th August 2020 , Tuesday 29th September 2020

Tuesday 27th October 2020

Parish Council meetings are currently being held on Zoom, if you would like to attend please contact the parish clerk who will email the meeting details.

The Parish Council still has one vacancy, if you are interested in becoming a Parish Councillor or would like some more information please contact The Clerk or any of the Parish Councillors.

Planning.

The Parish Council objected & submitted comments for the following application:

Erection of stables 4no loose boxes & covered area for bales.

Ref - 20/0245/FUL

‘We are concerned that the building work has already started with the site being cleared and possible footings being dug and in place. There is a risk to the horses with it being next to a railway line.

The parish council made ‘no comment ‘to the following application.

Conversion of Garage/workshop to form no1 dwelling,

Ref 20/0561/FUL.

Playing Field.

The locking/Unlocking of the gates commenced on the 29th March 2020 this was still being done by an outside contractor successfully.

The clerk had obtained 2 quotes for CCTV to be installed at the park, to help combat the antisocial behaviour, which had increased during lock down.

The playpark was re-opened on the 4th July with users of the park reminded to adhere to the social distancing guidelines and other recommendations issued by the Government.

Policies

The following policies were reviewed -

Model Standing Orders, Financial Regulations, Complaints Procedure & Handling method.

Data Protection Policy, Records Retention Policy, Data Breach Policy

Subject Access Request Procedure

General Information

The Parish Council finished the year at 102% of budget, the annual bank reconciliation balanced, it was then signed by the Chairman.

Election of the Chairman & Vice Chairman was deferred to May 2021.

Online banking is now up and running for the parish council, so alleviating the need for councillors to meet and break social distancing guidelines.

Rachel Popplewell

Parish Clerk

The Singing Tree

I said to my dog as we walked along
You lead the way,
We've got plenty of time on our hands today.
And so we walked the grassy path,
He forked to the left and then to the right,
And I heard a sound, joyful and bright.

We approached the source and as we came near, I saw a tree.

And the tree was singing.

I took two more steps and the singing stopped.

So: so did I.

I held my breath and it sang again.

Two more steps and the singing stopped.

I stopped again and it sang again.

And so I progressed towards my goal:

Step, step. Stop. Step, step. Stop.

Silence. Singing. Silence. Singing.

At last I arrived in this way, by inches.

The singing tree was full of finches!

Gleams of yellow, flashes of red,

Beautiful, darling, golden finches.

My heart grew light and I stayed for a while,
But my dog grew bored and we went our way.

We returned again the following day,

But the finches had gone away.

Even so, the sight of the tree

Made me smile and my heart feel free.

A gathering of goldfinches is a charm.

I know this to be true.

And now I know another fact

And something that is new.

A charm can charm a tree to sing

And when the charm has gone,

The other charm it cast remains

And the memory lives on.

© Rosemary Richards

The future of the paper Eagle Eye.

First and importantly : the Eagle Eye will always be available as a paper copy.

As with everything, things change and costs rise, so the point has been reached where we can only continue to deliver to every house in Eagle for about another year, until funds run out. So now is the time to plan ahead and find out what people would like to happen.

Some people comment that they never read the Eagle Eye and throw it straight in the bin—so it would make sense not to deliver to them.

The Eagle Eye can be put online on the village website—indeed it has been for two months as a test. The benefits of that are that it stays there for reference, and for advertisers, we can make the links in adverts work so they can click through to websites or facebook pages, giving a much wider distribution.

For now, your thoughts and opinions are being sought, so PLEASE would you fill out the questions overleaf and drop them into the Post Office (thankyou Nat/Katie for agreeing to accept these)

OR

Email me with the answers on to janewallis41@btinternet.com.

OR

I will put the same questions on the village facebook page and you can respond on there.

Thank you in advance of your help.

Eagle Eye questionnaire.

1. Do you read the Eagle Eye? _____

If no—any particular reason? _____

2. If you do read the Eagle Eye—Would you prefer a paper copy or an online copy _____

3. If you like the paper copy, would you still like it delivered? _____

4. Would you be prepared to pay a small amount for a paper Eagle Eye? _____

If yes—how much? _____

Thank you for your help in answering these questions.

Name and address (optional)

60th Open Show
Staged by
EAGLE VILLAGE PRODUCE ASSOCIATION.
Saturday 12th September 2020

SCHEDULE

The W.B.Lincoln Cup	-for the most points in classes 1-18, except 11 and 12
Sturges Cup	-for the most points in classes 19-24
Birkett Cup	-for the most points in classes 25-30
Clark Cup	- for the most points in classes 31-32
Ladies Cup	- for the most points in Home Produce classes 34- 41
Handicraft Cup	-for the most points in classes 43-48
Watson Cup	-for men only classes 33 and 42
Margaret Duckenfield Memorial Award	£25 for the best overall in classes 44-47

Judges

J Moss	-Fruit and Vegetables
K wood	- Roses and other Flowers and, Floral Art
S Howard	- Home Produce
G Prestwich	-Craft, Photography and Children's classes

Timetable

Staging 11-00am till 12-30 pm

Judging 12-45pm till 2-15 pm

Open to the public 2-30 pm onwards

Cups will be presented at 3-00pm by Mr Rodney Fagg

Raffle will be drawn after the cups have been presented

- RULES:**
1. The Judge's decision is final.
 2. The entry fee will be 25p for each entry.
 3. Prizes will be £1, 50p and 25p in all classes except 11, and 12.
 4. Points for all classes are 3, 2, 1, except in classes 11 and 12.
 5. 1st, 2nd and 3rd will be given in all classes except 11 and 12 when only first prize will be given.
 6. ALL EXHIBITS MUST BE GROWN OR WHERE APPROPRIATE MADE BY THE EXHIBITOR EXCEPT IN FLORAL ART.

Vegetables

1. 4 Potatoes
2. 4 Carrots
3. 4 Onions
4. 3 Parsnips
5. 3 Courgettes
6. 6 Runner Beans
7. 6 Tomatoes with stalks
8. 6 Tomatoes (cherry type) with stalks
9. 3 Red Beet without tops
10. Any other vegetable in appropriate numbers
11. Longest runner bean
12. My disaster (a vegetable-only one specimen of any variety)
13. A bunch of herbs

Fruit

14. Plate of 4 Desert Apples with stalks
15. Plate of 4 Culinary Apples with stalks
16. Plate of 4 Pears with stalks
17. Plate of 4 Plums with stalks
18. Plate of any other fruit (one variety) with stalks where appropriate

Flowers

19. 1 Dahlia pom pom type
20. 1 Dahlia any other variety
21. Vase of 3 Dahlias
22. 3 Blooms of any other flower one variety
23. A container of mixed flowers from your own garden
24. Pot plant (must have been owned by the exhibitor for at least six months)

Roses

25. 3 Roses H.T. any variety
26. 1 Specimen rose H.T. any variety
27. 1 Spray of floribunda any variety
28. 1 Full blown rose
29. 1 rose judged for fragrance
30. A bowl of roses (not a vase) nine blooms any variety

Floral Art

31. ' VE Day" accessories allowed, maximum width 18" (450mm)
32. Basket of leaves, using fresh leaves only, maximum width 18"(450mm)
33. "Great Britian", flowers with foliage, accessories allowed 18" (450mm)
(men and beginners only)

Home Produce

34. 4 Apple brownies (recipe number 1).
35. Fruit pie on a plate
36. 4 Cheese scones
37. 6 jam tarts.
38. Jam filled Victoria Sandwich – 6oz recipe
39. Jar of Jam or Jelly
40. Jar of Lemon Curd
41. Jar of any other preserve
42. War time fruit cake. (men only, recipe 2), 4 pieces

Craft

43. An article of woodcraft
44. An article of needlecraft or cross stitch
45. Party invitation
46. Any other craft
47. A Painting
48. Children's craft. A poppy in any medium

Photographic Competition

49. Any black and white photograph

ENTRY FORM

If possible please complete your entry form before the show

1	2	3	4	5	6	7	8	9	10
11	12	13	14	15	16	17	18	19	20
21	22	23	24	25	26	27	28	29	30
31	32	33	34	35	36	37	38	39	40
41	42	43	44	45	46	47	48	49	50

Name (blockcapitals)

Recipe 1

Apple brownies. 110g melted and cooled butter, 175g self raising flour, 1tsp ground cinnamon, 1/2tsp baking powder, 200g caster sugar, 1 large egg, 125g hazelnuts, 50g sultanas, 2 apples, peeled, cored, and cut into small cubes. Pre heat oven to 180c/160c fan /gas 4, Butter a 25cm square baking tin.

Mix the flour, cinnamon and baking powder together. In a separate bowl, beat together the butter, sugar and egg. Stir in the nuts, sultanas and apples. Add the flour mixture and stir until combined. Spread the mixture in the tin and bake for 30mins until golden and only just firm. Allow to cool then cut into 12 squares. Choose 4 for class 34.

Recipe 2

War time spice fruit cake. 225g self raising flour, 110g butter, 110g sugar, 110g dried mixed fruit, 1 egg, 5 tablespoons of milk, 2 teaspoons mixed spice. Small handful of demerara sugar.

Rub the butter into the flour until it looks like fine bread crumbs, add sugar, dried fruit and mixed spice. Add egg and milk to make a soft dropping consistency. Put in a lined 2lb loaf tin or 6inch round tin. Sprinkle demerara sugar over the top and pat down with the back of a spoon, then bake for 60 to 75 minutes in a pre heated oven at 180c/160c fan/gas 4. A skewer should come out clean.

Telephone
Lincoln 01522 / 684825
Mobile 07850 / 418744

35 Station Road
Thorpe On The Hill
Lincoln
LN6 9BS

CHRIS MARTIN

*Painter & Decorator
Builder*

Specializing in all aspects of building work to properties, including kitchen & bathroom fitting, wall & floor tiling, plumbing, joinery, plastering, laminate wood floor laying & much, much more.

No job too small, so call now for a free quote & friendly expert advice

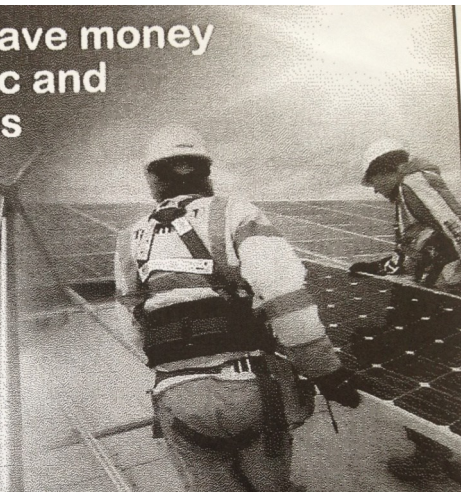
HOME IMPROVEMENTS

PROPERTY REPAIRS

Make electricity and save money with Solar Photovoltaic and Solar Thermal Systems

- PV and Solar Thermal Installer
- Full Design & Installation
- Domestic and Commercial
- PV Solar Panels
- Wind Power Specialists
- All Electrical Work Undertaken

We will talk you through the procedure and work out examples of potential savings on your household energy bills.



EAGLE ELECTRICAL



is an approved MCS Solar PV installer

Call for a FREE quote today:

01522 868072

07966 436944

www.eagleelectrical.co.uk



Powell Legal Consultancy

Providing solutions, cutting costs

Wills and Powers of Attorney



Local personal service
Competitive fees
Legally qualified Will Writer (LLB Dip LP)
FSWW

Free home visits

Call: 01522 306326/0778 658
5728

Email:

liz@powelllegalconsultancy.co.uk

www.powelllegalconsultancy.co.uk

Member of Society of Will Writers –
Fully Insured



On The Level Joinery

Stephen Atkinson

07957187443

Ontheleveljoinery81@gmail.com

Free friendly quote

All joinery work

Kitchens.

Doors .skirtings. stud walls.

Flooring. Stairs/balustrades

Fencing. Decking



Taylor Tree Services

Gary Taylor
N.D.A

All aspects of tree and
hedge work
Undertaken
NPTC Qualified

Fully Insured

Domestic and Commercial

24 Fosse Lane
Thorpe On The Hill
Lincoln LN6 9BE

Mobile: 07845720099
tel: 01522 685690
gary.taylor.10@gmail.com



BRITESHINE
CLEANING SERVICES
DOMESTIC | COMMERCIAL | INDUSTRIAL

- Window cleaning
- Gutter cleaning
- Conservatory cleaning
- Fascias and soffits
- Builders cleans
- Patio and driveway cleaning
- End of tenancy cleaning
- Oven cleaning
- Carpet cleaning
- Contract cleaning
- Warehouse cleaning

Call or email for your free no-obligation quote
 Mob: 07762 244810 • Email: info@briteshinecleaning.co.uk

GARRY
The Boiler Man

shhh...
save it!



Have your boiler regularly serviced and save money

Evening Tel: 01 522 789840
Mobile Tel: 07946 11 4955

Mark Wood Heating Ltd.
Oil Boiler Specialist
Servicing - Installation - Repairs

OFTEC REGISTERED

Full Central Heating Systems
 Boiler Replacements
 System Additions & Upgrades
Radiators - Pumps - Controls
 Unvented Hot Water Systems
 Power Flushing.

01427 628004 / 07703 217875

WILKINS

ESTABLISHED 1895

CHIMNEY SWEEP®

- TRADITIONAL BRUSH AND VACUUM SERVICE
- NESTS REMOVED
- CAGES, CAPS AND COWLS FITTED
- SWEEPING CERTIFICATES ISSUED
- PROFESSIONAL, CLEAN SERVICE
- FULLY INSURED
- POLICE CHECKED

01636 616425

wilkinschimneysweep.co.uk/newark 



Mobile Camper Care

The workshop that comes to you

For a hassle free service by a workshop that comes to you



@MobileCamperCare

Professional, local mobile workshop, caring for your Motorhome, Caravan or Camper at your home, in storage or on-site.

* or if you're thinking of buying a van we also offer Pre-Purchase Inspection allowing you to buy with confidence.

Telephone (01522) 716920 Mobile (07864) 630767

Email mobilecampercare@gmail.com



London Park of Motor Vehicle Care Engineers Association Ltd



MICK TAYLOR



MOTOR ENGINEER

Established 1982

PROMPT AND RELIABLE SERVICING ON ALL MAKES OF CAR

LAWNMOWERS SERVICED, SHARPENED AND REPAIRED

FLEET SERVICING

MOT PREPARATION

WELDING

EXHAUSTS

BRAKES

LIGHT COMMERCIALS AND DIESELS COLLECTION POSSIBLE

Mobile: 07958 123534

After Hours: 01522 685690

LAND ROVER VW PEUGEOT MERCEDES DAEWOO
 AUDI HONDA MAZDA FIAT RENAULT VOLVO
MID Lincs MITSUBISHI FORD
 BMW CITREON TOYOTA SEAT VAUXHALL
 NISSAN

Diagnostic, MOT & Repair Centre

MOT **Cars, Taxis, Vans** **Opening Times**
Repairs **Minibuses,** **Mon-Fri 8am-6pm, Sat 8am-13.30pm**
Servicing **Motor Homes** **Closed Sundays & Bank Holidays**

Car MOT £29.95

01522 697400

MARK PHILLIPS
MOTORCYCLE CLOTHING

Newark Road, Lincoln LN5 9EJ

01522 684 662

ENTERING OUR 17TH YEAR OF BUSINESS

SHOP ONLINE AT

WWW.MARKPHILLIPS-MOTORCYCLECLOTHING.CO.UK

SOME OF THE BEST PRICES AROUND FOR ALL STYLES OF
RIDER:
TOURING, SPORTS, COMMUTING, LADIES AND GENTS.
WAX COTTON, TEXTILE AND LEATHER.

PRICES TO SUIT ALL

HELMETS FROM £39.99 - £589.99

JACKETS FROM £24.99 - £499.99

PANTS FROM £49.99 - £379.99

BOOTS FROM £49.99 - £379.99

ACCESSORIES – UNDER GLOVES £4.99

BALACLAVA £4.99

ITALIAN SOCKS £9.99

COME AND SEE US!



Little bot bots

child minding



Ofsted registered childminder, offering a home from home day-care service in Eagle with spaces available now.

Please ring or email Victoria to discuss requirements or to arrange a visit.

Tel: 07789 010452

Email: Victoria@littlebotbots.co.uk

Address: Eagle, Lincolnshire

Scouts



27th Lincoln
Thorpe-on-the-Hill

Providing Scouting for ages 5 – 18
years old

Join our next great adventure.....

For meeting times and enquiries
contact:

Fran Firth
Group Scout Leader

Fran27lincoln.gsl@gmail.com

Or call 07952 480708



Swinderby
Pre-School



A local, friendly Pre-School playgroup run by dedicated, qualified and experienced staff. Ofsted registered & inspected, providing quality care & education to children aged 2 to 5 years (government funding available for those eligible).

Opening times (term time only):

Monday 8am - 3.05

Tuesday 8am - 3.05

Wednesday 8am - 3.05

Thursday 8am - 3.05

Friday - CLOSED

This includes breakfast club 8am-9am and early drop off 8.30am-9am subject to minimum numbers.

For more information, and to see what we can offer your child, please contact us on **01522 869362** or email swinderbyppg@googlemail.com





SING DANCE ACT
Come and join in the fun!!

Saturdays 10am-12.30pm
at
Swinderby Village Hall

Musical Theatre classes taught by friendly
qualified teachers

BALLET TAP JAZZ

Classes on Tuesdays from 4pm
at
Swinderby Village Hall
Ages 3-18

For more information please call:
Danielle – 01522 696100
or Carol – 01522 791898
Visit – www.dancelincoln.co.uk

PETE COWAN

DpT ADI / Fleet
Driver Trainer

RoSPA Diploma in
Advanced Driving
Instruction



**Beginners,
Theory, Advanced,
Defensive & Corporate
Training**

Tel: (01522) 778266
Mob: 07885 106284

Chestnut House, Wigsley Road,
North Scarle, Lincoln. LN6 9HD
e-mail: pete@a1drivertraining.co.uk

Hair by Julie

Mobile hairdressing



Over 20 years' experience

Contact home on 01522 681137

mobile on 07958307000,

email julielynn974@gmail.com

Hair By Angela

*Your Local
Mobile Hairdresser*

*N.V.Q. qualified ladies & gents hairdresser
offering competitive rates and quality
service in your own home*

*Whatever you need from a trim to a perm
Call Angela - she's the girl !*

Angela Martin
35 Station Road
Thorpe-on-the-Hill
01522 684825
07949671917

Body and Sole

The Country Clinic with the Calming Air

Are you feeling stressed? Do you find it hard to switch off? Are you struggling to sleep?



Either a Therapeutic **NO HANDS**® massage or a Reflexology session may be able to help.

Call Sally Smith on the number below or visit www.sallysmith.co.uk to find out more

“My feet are killing me”

If this sounds like you then call to book your appointment NOW!

Pain-free feet are just a phone call away. Most foot problems can be treated quickly and easily, there’s no need to suffer in silence.

Sally Smith

Chiropodist, Reflexologist, NO HANDS® massage Therapist

Body and Sole, Lime Grove Clinic, High St, Harby, Newark, Notts NG23 7EB

01522 704294 or 07974 580 262

Reflexology – helping you to relax and rebalance

Reflexology is a non-intrusive complementary therapy based on the theory that different points on the feet and hands correspond with different organs and systems in the body. Reflexologists work on these reflexes to help re-balance the vital energy in the body, which in turn improves the general feeling of wellbeing, and aids deeper relaxation.

Reflexology may also provide relief from a wide range of acute and chronic conditions, complementing allopathic medicinal approaches.

Using gentle massaging techniques on feet and hands, I have had success in helping my clients with a range of conditions including menopausal symptoms, spinal injuries, sleeping difficulties, autoimmune diseases and arthritic pain.



I have a Centralia Reflexology Mastership (incorporating Agored Cymru Units at Level 5) in Clinical Reflexology and belong to the Association of Reflexologists.

If you would like to find out more or come for treatments, contact me, Jane, on 01522 869094 or 07976 638822 or email jane@balancedreflex.com. My treatment rooms are located in Eagle, Lincoln. www.balancedreflex.com @BalancedReflex

**INDEPENDENT FAMILY
OPTICIAN
FRIENDLY PROFESSIONAL
EYECARE**

**j:d
opticians**

**17/19, Appletongate,
Newark**

- Private and NHS Work
- Eye Examinations available 6 days a week
- Childrens Eyecare
- Home visits available for the housebound
- Contact lens service
- Same day repair service
- On site glazing for most prescriptions
- Large range of frame styles on display
- Expert advice always available

01636 611133
(opposite the Palace Theatre)

THE STRUGGLER INN

AT 42 HIGH STREET

"Your local, family pub"

OPEN WEEKDAYS FROM 4PM
SATURDAY FROM 2PM
SUNDAY FROM 12PM

TEL: 01522 861873

EMAIL: DONNA@THESTRUGGLERINN.COM | WWW.FACEBOOK.COM/THESTRUGGLER



Full Grooms, Clipping, De-Shedding,
 Wash & Blow Dry, Nail Trimming,
 Parasite Removal,
 Puppy Introductory Sessions,
 Pick Up & Drop Off Service and so much
 more!

Full Grooms starting at £35

Wash & Blow Dry starting at £20

Contact us today to book your appointment
 or more information!

(01636 626411 (07568 990991

: www.thomasdoggrooming.com

Lucas Court, Fenton, Newark, NG23 5DE



Wet or Dry Grooms, Clipping, De-
 Shedding, Claw Clipping, Kitten Introductory
 Sessions, Pick Up & Drop Off Service and so
 much more!

Grooms starting at £45

*Thomas' Professional Cat Grooming is
 the feline department of Thomas'*

Professional Dog Grooming

Contact us today to book your appointment
 or more information!

(01636 626411 (07568 990991

: www.thomasdoggrooming.com

Lucas Court, Fenton, Newark, NG23 5DE

Folly Farm Cattery

Opening times:

Mon - Fri:

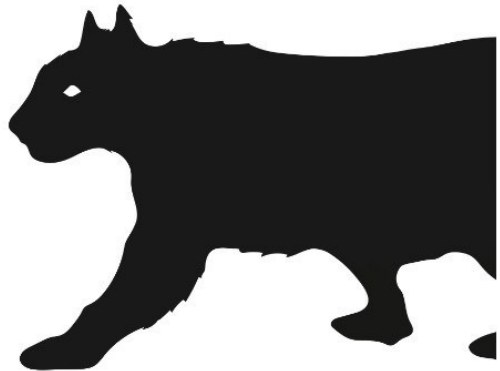
9am - 11am | 4pm - 6pm

Saturday:

9.30am - 12.30pm

Sunday & Bank Holidays

9.30am - 12pm



Folly Farm, South Scarle, Newark NG23 7JR

Call 01636 892042 or email follyfarmcattery@gmail.com

Your local trusted Independent Mortgage Advisor

Established in Lincoln for
nearly 30 years, specialising in

- MORTGAGES
- PERSONAL PROTECTION
- REMORTGAGES
- PROPERTY INSURANCE
- BUY TO LET
- EQUITY RELEASES

Call today and arrange a meeting in our
office in the Bailgate or at your home



FINANCIAL SERVICES

10 Gordon Road
Bailgate
Lincoln LN1 3AJ

01522 511177

SW Financial Services are authorised and regulated by the Financial Conduct Authority.
Your home may be repossessed if you do not keep up with your mortgage repayments.

Eagle Eyes Book keeping Services

Fully Qualified Freelance Book Keeper

Do you spend most of your quality spare time doing bookwork?

If the answer is Yes, then let me Help!

I provide a professional, friendly and reliable service at a very competitive rate. Reducing your workload—so you can relax.

Call Vicky Aldous:-
07799467189
01522 868790



Michael Waterton

*Cavendish, 12 Church Lane, Eagle LN6 9DJ
Tel: 07765 910281*

Mick the Stitch,

a Saville Row-trained tailor, now working from home is able to undertake all types of alterations.

✂ Suits

✂ Top Coats

✂ New Zips

✂ Wedding and Bridesmaid dresses, boys' waistcoats



✂ Jackets, Trousers, Vests

✂ Leather and Motorbike gear

✂ School Uniforms

✂ Mother of the Bride outfits



Dog Handling Security Services

Asset Protection - Farm Security - Shows & Events -
Residential Security - Wedding Venues - Business Security

Ex Police with over 10 year's experience in Security Services.
Professional & reliable Dog handling teams & Individual handler
for businesses and personal requirements. Public Liability. Fully insured.
Contact: Mel Bond - 07597 311927 - Email: melvyn.bond@yahoo.co.uk

TIGERTECH



ICT SOLUTIONS

Computer/tech gadget support
delivered directly to your own
home or small business

- Computer and mobile device maintenance and repairs
- Virus and spyware removal
- Data recovery
- Data backup
- PC health check / tune-up
- IT buying advice
- New and used PC sales
- On-site and remote support

Please contact Geoff Jones

T: 07305 729808

E: support@tigertech-ict.solutions



DODDINGTON
HALL &
GARDENS

GARDENS OPEN DAILY 10AM-4PM
ADULT £7.50, CHILD £3.50, FAMILY £19

Farm Shop open daily 10am-4pm
CHAT + COLLECT: Please call 01522 688581

Giant Lincoln Bike Shop
open daily 9am-5pm (Sun 10am-4pm)

PLEASE FOLLOW SAFETY MEASURES IN PLACE

DODDINGTONHALL.COM

Old Chandlery Apartments

*Do you have friends or relatives visiting?
Not enough bedrooms or sofa-space?
We can solve your problem...*

We offer a bed and breakfast solution combined
with the luxury of a small serviced apartment.

Visitors can relax and cater for themselves
(Continental / English breakfast ingredients included)
in a quiet, rural setting - plenty of off-road parking.

Please call Jane on **01522 868123** for
details, prices and information.

Old Chandlery Apartments, Morton, Swinderby.
jane@ocapartments.co.uk www.ocapartments.co.uk



COLLINGHAM PHARMACY



YOUR local pharmacy dispensing NHS, Private and Veterinary prescriptions.
Offering a wide range of medicines, vitamins, toiletries, pet medicines and seasonal gifts.

NHS Services Include:

- ✓ **Medicine Use Review**
- ✓ **Morning After Pill**
- ✓ **Blood Pressure Measurement**
- ✓ **Minor Ailments Scheme**

High Street, Collingham, Newark, NG23 7LB Tel: 01636 893038

email: collingham.pharmacy@nhs.net

Mon 8.45am-6.30pm Tue-Fri 8.45-6pm Sat 9am-12.30pm Closed 1pm-2pm daily

EAGLE VILLAGE SHOP & POST OFFICE

Now stocking local produce & offering an ordering service for:

- * Meat / Pies from the Lakeside Butcher
- * Fresh bread and pastries from Davisons Bakery & The Welbeck Bakehouse
- * Fresh fruit & vegetables from Mark Cheetham
- * Locally made cards, gifts, honey, chocolate, flowers, alcohol and much more!

Post Office services including: Free cash withdrawals & deposits / pay cheques in / euros

By supporting your local shop you are supporting other local businesses too!
#lovelocal

Opening Hours:

Monday, Tuesday, Thursday & Friday	7.30am – 6.30pm (Post Office 9am – 5.30pm)
Wednesday	7.30am – 1pm (Post Office 9am – 1pm)
Saturday	7.30am – 4pm (Post Office 9am – 12.30pm)
Sunday	Closed

FIREWOOD SUPPLIES
TO TRADE AND PUBLIC

HARDWOOD and SOFTWOOD

COMPETITIVE PRICES

CONTACT: JEFF

01522 691627

MOB: 07794 354787

FAMILY BUSINESS ESTABLISHED OVER 30 YEARS
VAT NO 570912148

TIGER HIRE

www.tigerhireuk.com

TEL 01522 869641



Marquees & Party Tents
Framed / Traditional
50 - 350

Catering Equipment

Bouncy Castles & Slides
Children / Adults / Fetes etc

Portable Toilets
suitable for
Parties &
Construction site use

Corporate or
Private Functions

EAGLE VILLAGE HALL - HIRE CHARGES

1st December 2019

VILLAGE RESIDENTS

Sunday to Thursday £8.00 per hour

NON-RESIDENTS

Sunday to Thursday £10.00 per hour



VILLAGE RESIDENTS

Fridays & Saturdays - Daytime up to 6pm £8.00 per hour

Evenings £13.00 per hour

NON-RESIDENTS

Fridays & Saturdays – Daytime up to 6pm £10.00 per hour

Evenings £13.00 per hour

(a £100 refundable deposit is required for evening bookings)



FURNITURE HIRE – Residents only (per day)

Large Tables £2.00 each, Small Tables £1.50 each, Chairs £1.00 each



Set-up Time (before 6pm) – Charged at day rates

Minimum booking period 1 hour - Bookings must be for the total time the hall is in use. (Please include preparation & clear up time.)

Eagle Village Hall are LICENSED PREMISES for the consumption of Alcohol. The Village Hall Committee is the licensee of these premises and you will need permission from the committee to sell or supply alcohol, our licence regulations must be observed & costs may apply.

Please contact us for details.

**TO BOOK THE VILLAGE HALL OR TO ARRANGE A VIEWING
PLEASE CONTACT – Jackie Jinks 01522 868418**

THE EAGLE EYE

Editor Jane Wallis, 15 Church Lane, Eagle LN6 9DJ
01522 869094 janewallis41@btinternet.com

Treasurer Anne Rogers, 4 Church Lane, Eagle, LN6 9DJ
01522 869996
anne.horsman@outlook.com

Distribution Mike Waterton 01522 869876

Advertising Rates (6 issues)

Half page	£40
Quarter page	£25
Small ads (text only)	£3
One-off advertisements	Please contact the treasurer for details
Family announcements	Free
Diary entries	Free

Publication date 1st week in February, April, June, August, October, December

The views expressed in the magazine represent those of the individual contributors and not necessarily those of the Editor. Readers are advised to take their own precautions before entering into any agreement with advertisers to obtain goods or services.

Village Facebook Pages

‘Eagle Local Information and What’s On in our Village’ - for posting information re events in the village, weekly groups/ clubs, useful numbers, suspicious activity etc.

‘Eagle Sales and Wants’ For those looking to sell or gift items and others who are looking for that specific something.

‘Eagle & Swinethorpe Parish Council’ for notices from the Parish Council



USEFUL TELEPHONE NUMBERS

Collingham Medical Centre	General Enquiries	01636 892156
Collingham Pharmacy		01636 893038
Community Beat Team	See inside	Page 6
Eagle Bowls Club	Ted Coulson	704340
Eagle Indoor Bowls	Roger Bishop	869557
Eagle Post Office		868212
Eagle Primary School		868354
Eagle Churchwardens	Sue and Chris Stiles	869296
OAP Party Fund	Roy Bell	868567
Parish Clerk	Rachel Popplewell	Parishclerk@eaglevillage.co.uk
District Councillor NKDC	Cllr Sally Appleby*	07714 271450
Playing Field Committee	Parishclerk@eaglevillage.co.uk	
Village Hall Bookings	Jackie Jinks	868418
Village Hall Committee	Simon Spear	869490
Village Produce Ass'n	Clare Evans	07825 160985
Village Website		www.eaglevillage.co.uk
200 Club	Rodney Fagg	869123
Fellowship Lunch	Jean Roberts	868797

*Cllr Appleby's email address is cllr_sally_appleby@n-kesteven.gov.uk

If you would like your telephone number added to this list or any of the above are incorrect please contact the Editor on 869094 or janelwallis41@btinternet.com

EAGLE & SWINETHORPE NEIGHBOURHOOD WATCH CO-ORDINATORS

Marion Bell , 34 Hilltop Close, Eagle	868567
Jon Faiers , Fallowfields, Doddington Road, Whisby	694352
Sue Ross , 7 Kestrel Rise, Eagle	868411

Publisher accepts no responsibility for the validity of any of the advertisements.
Printed by Pott Morton Printers, Lincoln