

Issue 351

Jun/Jul 2020

THE EAGLE EYE



VE DAY
75TH ANNIVERSARY
A SHARED MOMENT OF CELEBRATION
8 - 10 MAY 2020



The next issue of the Eagle Eye will appear at the beginning of August
Please send in your contributions before the copy deadline - **Friday Jul 24th**



High Street
Collingham
Newark NG23 7LB
General Enquiries/Emergencies: 01636 892156
Email: collingham.medicalcentre@nhs.net

Drs Fearn, Li, Coulton & Walker

Monday - Friday 8.00am-6.15pm

For Appointments telephone: 01636 893956 8.00am – 6.15pm
For Prescriptions telephone: 01636 892210 10.00am – 12.00pm

*In addition to our normal medical services, we can offer:
Child and Adult Immunisations, Well Person Health Checks, Travel Advice, Minor Injuries, Joint Injections and Minor Ops (including cryotherapy)*

Our communication with patients relies on current information. If your personal details change, including telephone numbers, please let the practice know. Thank you.

Out of Hours Service is provided from 111 when the surgery is closed.
Website: www.collinghammedicalcentre.co.uk

PRESCRIPTION ROTA

At the start of lockdown, we were asked if our village volunteers could deliver the medication on a daily basis rather than the fortnightly rota which we previously ran. We were extremely fortunate that so many people came forward to help with the daily deliveries which will continue for the time being until the pharmacy can manage the volume themselves - probably once the lockdown restrictions have ended.

Our grateful thanks go to all of our volunteers who are providing a very useful service to our village.

Mondays	Deborah Dawson	868037
Tuesdays	Jane Wallis	869094
Wednesdays	Lynda Williams	869225
Thursdays	Angela Stewart	07969 428167

Call to listen to daily prayers, hymns and reflections . The free telephone number for anyone who doesn't use internet is 0800 804 8044.

EDITOR'S NOTE

Wow—how things change in four months! When I signed off of the Feb/Mar edition of the Eagle Eye, “social distancing”, “clapping for keyworkers”, and “stay safe” hadn't been part of our vocabulary, let alone a way of life.

So —an apology that an edition of this Eagle institution was missed out—we became locked down, and distributing the magazine just wasn't possible.

At this point, 10 weeks into our lockdown situation (albeit now slowly relaxing), there still isn't much to report on or look forward to (apart from some sort of normality), so I invited input from our great community, with reflections upon VE Day and how lockdown has affected us. This edition is different from any previous!

Eagle celebrated VE Day in true Eagle style by having individual street parties on a Friday Bank Holiday (May 8th) that were socially distanced, with afternoon tea, music and camaraderie. I have dug out the Eagle Eye of 25 years ago, and reproduced an account of the celebrations that took place then,

There are some lovely contributions about how lockdown has affected different people and their change in values, and their gratitude for all of the good things that have come out of this.

Let us not forget either that we have NHS and blue light workers in our community, as well as the recycling teams and the postpeople, and I'm sure I reflect everyone's gratitude in thanking them for the hard work and dedication that they apply to keeping us going,

There is a lovely obituary to Mr Martin Rogers, who passed away suddenly on 10th May. Aside from being the most gentlemanly of gentlemen, Martin was the bedrock of admin of the Eagle Eye. My sincere condolences go to Anne, Ben, and all of Martin's family and many friends.

Fingers crossed that the next edition will be full of forward plans for all of the Village clubs and societies whose activities are currently curtailed.

Stay Safe!

Jane

MARTIN ROGERS 1946-2020



By now most of you in the village will have heard of the sad and unexpected passing of Martin Rogers, a resident of Church Lane. Martin was not one to blow his own trumpet but quietly and efficiently he enabled the Village Hall Committee and the Eagle Eye to exist and function, and to lend support to the quiz and bingo sessions.

Martin lived in the village for 13 years first on his own and latterly since 2011 as the husband of Anne whom many of you will know.

Born in Harrow he spent his early life down South as his father ran a paper-merchant's business based in Covent Garden supplying traders with paper with which they packaged fruit. He studied furniture design at College in London, where he met Jackie, who was to become his first wife. In 1972 Martin and Jackie moved to Cropwell Butler in Nottinghamshire where they established a textile design studio, producing artwork for home interiors products such as furnishing fabric and wallpaper. They later founded their own manufacturing company 'Malthouse Fabrics', supplying UK furniture manufacturers and a range of UK and international retailers.

Martin and Jackie had intended to move to Eagle together but on the unexpected death of Jackie Martin found himself inhabiting the house alone. He quickly made friends and began to involve himself in village life.

I got to know Martin when he joined the Eagle Eye team in the time of Jan Rayner's editorship. Martin was a meticulous person; no-one can say that his shirts were not carefully ironed or that his trouser creases were not sharp. It appears that Martin did all the ironing, in fact including for Anne. His ability to distinguish and hold a colour was uncanny and if he said that two colours did not match then you just deferred; he had had a life in the design business after all but for the record he was always right. He was a genial and attentive host, as those of us who attended his social gatherings can attest. The glass was never empty and the menu carefully chosen and beautifully presented. My brother once attended such a do and could talk of nothing else for weeks.

If you did not know him you will have seen him about, striding purposefully with his distinctive gait, and you may have passed him when walking the Beehive or in Tunman Wood. I think he probably had the record for the number of Beehive circuits.

Martin had a wicked sense of humour, a keen wit and an infectious laugh. He could be decidedly risqué in his choice of topic of conversation but there was ever a twinkle in his eye. He was accomplished, sensitive and thoughtful, and wore his knowledge and skills lightly. For seven years a group of four of us played Bridge together every week. He was a very good player and when he was on a roll and closing in on a small slam he would zap the cards down with an unspoken 'take that!' and cruise to victory. If you were his partner and made a mistake you would be taken to task, in my case usually deservedly so. But those evenings were fun and I miss them.

He espoused various causes passionately. In recent years he was unable to stay silent on the big political issues of our time and could spectacularly go off on one at the drop of a hat. It would however be a shame if we were all alike and some people are just that bit different naturally; that is what makes them characters.

He was a very good friend. We had lots of lively conversations at the kitchen table on all subjects under the sun. But most of all he was supportive and sensitive to me when I was ill a few years back. He was kind and non-judgmental and listened and that I will, can, never forget. He was also a great encourager: "go for it" he would say; so I did and sometimes it worked and sometimes it didn't but at least I had tried.

In concluding I would like us all to think of Anne and Ben and Martin's sister Brenda. Their lives have all been dealt a huge blow, losing a husband, a father and a brother when they least expected it. Though he had had health problems he appeared to be over it. The village will be the poorer for his passing and Eagle will miss the glue that his contribution supplied. We will all miss him in our own way and all have a memory to remind us of him. I certainly do: many. When greeting or on the phone he would cheerily call me 'Jimbo'; no one else calls me that but, as it was Martin, I didn't mind, and it is something I wish I could hear again. I thought 2020 would be remembered as the year of the virus but now I know it will be seen by me and others as the year of fond memories of a 'lovely man'.

Let it be.

EAGLE MEMORIAL ARCH—100 YEARS ANNIVERSARY

With all of the restrictions imposed by the coronavirus lockdown, an important milestone came and went unmarked. The Eagle Memorial Arch—gateway to the beautiful avenue of lime trees leading to Eagle Church—was erected as a memorial of 8 parish men who fell in the 1st World War.

The following is taken from **Eagle Ancient and Modern 1087-1932**

“Under chairmanship of the Rev. G.W. Smith, Vicar, a committee was formed for the purpose of considering a suitable memorial for the parish, of those 8 men who had fallen in the Great War 1914-1918. The members were Mr and Mrs Baldock, Mr Burgess, Mr Esam, Mr Pacey, Mr and Mrs Parker, Mr Pillsworth, Mrs Rose, the Misses Smith, and Mr and Mrs GE Smith.

The names of those who gave their lives were Edward Bean, Major Herbert Bean, Leonard Green, Ralph Green, Frank King, Harry Stamford, and Anthony Woodend. It is a singular coincidence that only the names Bean and Woodend now (1931) occur in the parish,

The arch was unveiled by Lord Monson, Knight of Justice, 1st May, 1920, (shown below)





THE MEMORIAL ARCH

having cost about £500. The two carved figures on either side of the Arch represent, on the left, a Knight Templar and on the right, a Knight Hospitaller. The whole erection forms a unique and very beautiful feature of the attractions of the village, and a delightful entrance to the avenue to the church. The sculptor was Mr A J Tuttell of Lincoln.

After a careful enquiry it was found that legally the Arch is the property of the Church Council, being built on land belonging to the Ecclesiastical Commissioners, held by them for the benefit of Eagle Church; but it was acknowledged that morally it belongs to the whole parish, which raised the funds for its erection. A small fund was raised in 1927 for some slight repairs, and the balance of a few shillings, invested in the name of the Honorary Secretary of the Church Council. A Committee of Maintenance was formed consisting of Messrs, H Anker, W Baldock, JW Cook, FB Fenton, GE Smith, R Sturgess and the Vicar.

In addition to the Memorial Arch, raised to commemorate those who had not returned from the war, it was thought fitting that those who had returned should have some little memento of the grateful thanks of the village. Some £85 was raised and in November 1920, wrist watches or electroplated teapots were presented to each one. (50 names are given)

VE DAY celebrations in Eagle—past and present.

V.E. DAY ANNIVERSARY - 6TH, 7TH AND 8TH MAY

Plans for the V.E. Day Commemoration are well advanced and the programme for the whole week end is as follows:

SATURDAY 6TH MAY

Starting at 7.30 pm there will be a “home-grown” entertainment in the Village Hall, followed by a 40’s Dance. The flavour for the evening will be the “40’s” and it would be fun if people could try to dress appropriately. There will be a licensed bar and a buffet supper during the interval between the entertainment and the dance. The doors and the bar will be open at 7 pm.

Admission will be by ticket only: these will be available, price £3 each, in the near future from Committee members or at the Post Office. Please try to arrive in time to be seated for the entertainment to start at 7.30pm. Dancing will be to the Vic Harrod group playing 40’s style music.

SUNDAY 7TH MAY

At 10.30am there will be a Service of Thanksgiving in the church, after which the congregation will process to the War Memorial where there will be a Remembrance Service, with wreath laying and a period of silence. The whole will end with a rededication of the memorial.

We have asked for a brief road closure over the period of the Remembrance service and the Police have agreed, provided we can make some arrangement to divert through traffic away from the village. To this end, we would like three volunteers to act as traffic marshals, for the period from 10.50 until 11.20am on this day. It would be unfortunate if traffic noise was to interfere with the occasion and, with a large number of people there, it is likely that they will spill over on to the road, so there are safety implications, too. Thus, marshals are really essential to the occasion. Volunteers, please contact the Parish Clerk or Henry Horscroft on 868653.

After the service the Village Hall will be open for refreshments and, we hope, a small display of WWII memorabilia. If any one has something they could loan for this display, will they please contact Henry Horscroft on 868653 with the details.

CRICKET MATCH

On Sunday afternoon there will be a cricket match starting at 2.30pm on the Playing Field between the Chairman’s Over 40’s XI and the Club side. This will be a Charity event and any funds raised will be given to the British Heart Foundation. It should be a good fun occasion and the teams will welcome your support.

MONDAY 8TH MAY

This day will be given over to a Children’s Party, starting at 3 pm and finishing not before 5 pm. We hope that the weather will be good enough for the party to be held outdoors, with the tables laid out along the church drive way. If the weather is bad, it will be held in the Village Hall.

The party will be open to all Eagle Primary School children and any Eagle children who are under Primary School age (Playgroup, Mums and Toddlers and children who do not attend any group). So that we can properly cater for those who will be attending, will you please indicate on the form you will find with this issue of the Eagle Eye whether your child/children will be there.

We expect there to be lot of children at the party and we would welcome help in preparing and supervising on the day. If you would like to help, will you please contact Jan Kavanagh on 868629

That is a copy of the page from the Eagle Eye dated April 1995. The planning must have paid off, as it was reported in June that:

“A very enjoyable and happy evening in the Village Hall was followed on Sunday by a memorable service of thanksgiving in the church and a Remembrance Service at the Memorial Arch. And, if the noise was any measure of success, the children’s party on Monday was a winner, rounding off a busy but successful weekend.”

And: Commemorative Bone China Mugs—Limited Issue

“Sales of these mugs have been going well and everyone seems to be very pleased with them. The design shows our War Memorial Arch and Church on the front with the Maltese Cross and Village name on the back, together with the dates and occasion. They are in sepia tone with gold rim. On sale at £4 each from any of the following:- Edwin Green, Chrissy Munks, Jan Kavanagh, Jean Sparrow, Henry Horscroft and the Post Office.

How marvellous that with the exception of Mr Green, the above named are still in the village—and proud owners of one of these mugs, no doubt !



VE Day coincided with book swap day, and the combination makes a lovely statement about lockdown and a determination to celebrate at the same time.

Eagle Village Book Swap

Despite the difficult circumstances, it has been a real pleasure to set up the Eagle Village Book Swap during the lockdown. As a relative newcomer to Eagle – we moved in a year ago – I was keen to make a contribution to village life at this difficult time, and as an avid reader myself, a book swap seemed ideal, especially in the absence of the usual library service. My husband and I have been overwhelmed by the generosity of the village in donating over two hundred books, DVDs and magazines, covering a vast range of genres; we are evidently a village of readers!

It has also been wonderful to see the book swap gain a loyal following, and we enjoy seeing so many villagers visit the stall each fortnight to return books and collect new ones, all whilst respecting social distancing guidelines. For young children, a visit to the book swap seems to provide a much-needed “outing”, and there is always a brisk turnover of books in the children’s boxes.

The book swap takes place outside Excelsior House, 58 High Street, every other Friday, from 10am – 5pm, and readers are welcome to borrow as many books as they wish. Where possible, books should be returned to a future book swap, and book donations are welcome at any time. The book swap will take place on be 5 June, 19 June, 3 July and 17 July 2020. If there is continued interest, I hope that the book swap will continue after the lockdown, as it seems to be a popular service for the village.

Jessica Mulligan





Do you know someone who is struggling in some way during Covid 19?

They might be, in isolation, shielding, a carer, elderly, living with dementia or disability, lonely or just not coping very well, then maybe we can help.



The Sage Gardener CIC volunteers are distributing wellbeing packs across the county: providing a little sunshine to peoples day with a mix of plants seeds/nature, wellbeing or crafting.

You can also buy or donate a pack to go to someone you may nominate (if you wish) who has gone the extra mile to support others.

For further details, a referral form or to donate contact

facebook: sagegardener@CIC ,
Jane.sagegardener@virginmedia.com or Tel 07707325016

Please note – all parcels will be subject to availability and variation dependant upon sufficient funding and availability of materials. Delivery will be as and when volunteers are available.

This year, being the 75th anniversary of VE Day, many great events were planned, but with the onset of the Covid-19 pandemic and resultant lockdown and social distancing, street parties and celebrations were all cancelled. However, in true Eagle Style, where no opportunity to celebrate is ever missed, most streets arranged their own socially distanced afternoon tea parties, and one family had their own idea to create a “Private Flypast” in the village. The following account is from Rebecca Campbell, about their very special contribution:

During the lockdown we have seen so many amazing examples of community spirit in the village: Natalie arranging a delivery service for self isolating or vulnerable people in the village; people going to the supermarket for others; sharing hard to find items like flour; people decorating stones and signs to cheer people up on their daily exercise.

Our children, Ariana and Sebastian, really wanted to do something to cheer people up but we weren't sure what to do! During the week leading up to VE day we had been learning about World War 2, we had even weighed out one adult's ration allocation for a week and found out that it really wasn't a lot of food; it made us realise how fortunate we are.

It was then we decided to make the aeroplanes from cardboard boxes and do a flypast in the village.

Colin was quickly “deployed” to assemble the planes, with some assistance from the children and myself in the painting department.

We had the idea to put it on the village Facebook page as we wanted as many people as possible to see our flypast, and we were overwhelmed by the support and the lovely suggestions of doing a collection (the final total was £240, which is fantastic).

Ariana and Sebastian were so excited to pilot their planes after the national commemorative silence, and to see so many people out to watch them was absolutely wonderful, there was such an amazing feeling of community spirit.

Being in lockdown has certainly made us appreciate our family (most of the time), the village we live in and how important our loved ones are. It also gave us time to reflect on VE day and made us realise that our current situation isn't so bad, we are lucky to have technology to keep us in touch with extended family and friends. Ariana and Sebastian were astounded to learn that many people wouldn't hear from their relatives for very long periods of time during the war.

It feels that all of this has made everyone really embrace the VE Day celebrations and we felt really lucky that we could help people celebrate with our flypast. We would like to say thank you to everyone for making it so special, it was a day we will never forget.

Rebecca, Colin, Ariana and Sebastian Campbell



<u>EAGLE VILLAGE HALL 200 CLUB</u>		
<u>WINNERS JANUARY 2020</u>		
<u>NUMBER</u>	<u>NAME</u>	<u>AMOUNT</u>
70	MR S KNIBBS	£100.00
52	MRS E NORTON	£50.00
162	MRS W COE	£50.00
174	MR P BOOTH, JNR	£20.00
100	MRS S BEECROFT	£20.00
123	MR & MRS ROBBINS	£20.00
145	MISS J EDEN	£10.00
110	MRS A ROGERS	£10.00
44	NORTON GRANDCHILDREN	£10.00
106	MRS D THOMPSON	£10.00

<u>WINNERS FEBRUARY 2020</u>		
<u>NUMBER</u>	<u>NAME</u>	<u>AMOUNT</u>
88	MRS L LEE	£100.00
98	MR S WARD	£50.00
109	MR P PARKES	£50.00
130	MRS J CROWDER	£20.00
73	MRS Y POPE	£20.00
171	ALFIE SLEIGHT	£20.00
52	MRS E NORTON	£10.00
79	MR J DOWNES	£10.00
136	MRS G SPACEY	£10.00
172	MRS R AFFORD	£10.00

200 CLUB

SUSPENSION

Due to the Coronavirus situation the 200 Club “draw” has been suspended for at least 3 months.

When we can resume the missing months will all be drawn in succession on the same day (e.g. March, April, May etc.)

The Village Hall Committee hope that all members of the 200 Club will understand and bear with us at this difficult time.

EAGLE VILLAGE 200 CLUB

In the 70s and 80s, the Village Hall Committee had to raise funds to manage the Hall without any public donations. All of its funds came from a few donations and money raised from public functions such as book sales, jumble sales and dances

It was decided to start a 200 Club. One of the problems with a 200 Club was advertising it. The Committee was told that, because it was a form of gambling, it could only be advertised to the public on the premises which would benefit from it. This meant that we could not send out posters and that committee members would have to knock on every door to advertise it.

Advertising like this took a very long time in the evenings and weekends, explaining to individuals what it was about. But eventually it was done and we could start. The start up was very successful and many members have been with the fund since its beginning some 40 years ago. The system has grown now with its contributors paying £2 each month and enjoying any winnings they might have from the monthly £300 worth of prizes. The fund has been a great asset for Eagle.



A little hello from FOES May 2020

A warm hello from Friends of Eagle School, we are currently having to take a COVID break from our usual fundraising activities, but we are very much looking forward to being able to plan lots of fun events for the pupils at Eagle School and Little Eagles Preschool, as well as their families and the wider community very soon. We hope to be able to resume planning future events and activities from September onwards, or as soon as it deemed safe to do so.

At this time and with a heavy heart too, we regret to inform you that all of our events up to and including September 2020 will not be going ahead this year as planned, therefore this year there will be no Summer Fayre and we will not be able to go ahead with Party in the Park 2020. All is not lost; we must stay positive and look forward to a brighter future when Covid is no more! This is just a break to ensure that we all stay safe and follow the guidelines for social events and gatherings. We will be back asap and we will be planning all of these wonderful events again. We will also be looking to reschedule the cancelled ladies fashion show and shopping event, so please do hang on to your tickets for this and look out for further details. These will be communicated in the usual manner, via School and on our Facebook page.



It has been an unusual time for all, when most of us are missing the usual school routine and our children are all missing their friends and Teachers at Eagle School and Little Eagles. VE Day was a very heart-

warming experience indeed. It was lovely to see so many people brighten up the village with patriotic decorations and to see so many people in the village celebrating the occasion, in true 'Eagle' spirit. It was also very special to hear the village singing in unison to We'll meet again, following her majesty's televised speech. We'll meet again - a song that expresses a lot of how we are feeling in the current lockdown situation. We also hope that everyone had a wonderful day and enjoyed their cream teas too, yum!

All that is left for me to say is that we look forward to happier days ahead, when we can see many of your faces once more. As always if anyone would like to become a friend of Eagle school then please do get in touch, a warm welcome awaits.

Take care and stay safe everyone!

Kindest Regards

Katie Downes
Chair of FOES



BOOK CLUB BOOK REVIEW

Where the Crawdads Sing By Delia Owen

Left alone in the marshes of North Carolina, Kya is abandoned by her family. She learns to survive the harsh habitat . However when a murder is committed she comes under suspicion from the locals and the police.

The group found it a very touching story. which kept you guessing until a gripping ending reveals all.

We gave the book a score 4/5

Our next read is Everything I Never Told You by Celeste Ng



EAGLE & SWINETHORPE PARISH COUNCIL

Eagle Parish Council (Report for March issue)

One set of minutes has been agreed since the last edition of the 14th January 2020. A full copy of the minutes can be found on the Parish website www.eaglevillage.co.uk

The parish clerk can be contacted by either email at - parishclerk@eaglevillage.co.uk or by phone - 01522 868936

The dates for the next parish council meetings are -

Tuesday 31st March 2020, Tuesday 28th April 2020

Tuesday 26th May 2020

All parishioners are welcome to join us.

The Parish Council still has one vacancy, if you are interested or would like some more information please contact the clerk or any of your Parish Councillors.

Planning.

The Parish Council submitted 'no comment' to the all of the applications listed below

- Erection of Single Storey side Extension. Stone Holt, Thorpe Lane, Eagle. Ref 19/1670/HOUS
- Erection of single storey rear extension. The Bungalow, Mill Lane, Eagle Moor. Ref - 19/1592/HOUS
- Erection of single-story rear extension and alterations to existing dwelling. 24 Falcon Close Eagle Lincoln LN6 9DX. Ref - 19/1775/HOUS

Playing Field

The Play Inspection Report was reviewed, no major concerns were raised. The green storage box was now locked up with additional locks being put on, but the Tennis nets and winder were no longer fit for purpose or available to be used, due to them being damaged when the box was prised open.

Emergency Plan

Eagle & Swinethorpe Emergency Plan has now been signed off; a copy is located in the Church.

General Information

The parish council were at 81% of target as at 31.12.2019 (should be 75%), no changes were made to the budget.

The Precept for 2020/2021 was agreed of £16,305, which was an increase of 9.10%. In monetary terms this is an increase of £4.81 per year on a band D property.

The increase will cover the ongoing costs at the Playing field to help combat the Antisocial behaviour issues and the up keep of the Play Equipment.

Flooding at Swinderby Station Carpark, was being looked into by Network rail and the farmer of the adjoining field, an issue had been identified with a drainage pipe being blocked under the rail tracks.

Rachel Popplewell, Parish Clerk

Eagle Parish Council

Two sets of minutes have been agreed since the last edition of the Eagle Eye for the 25th February 2020 and 25th March 2020. A full copy of the minutes can be found on the Parish website www.eaglevillage.co.uk

The parish clerk can be contacted by either email at - parishclerk@eaglevillage.co.uk or by phone - 01522 868936

The dates for the next parish council meetings are -

Tuesday 30th June 2020 Tuesday 28th July 2020

Tuesday 25th August 2020.

Parish Council meetings are currently being held on Zoom, if you would like to attend please contact the parish clerk who will email the

meeting i/d.

The Parish Council still has one vacancy, if you are interested in becoming a Parish Councillor or would like some more information please contact The Clerk or any of the Parish Councillors.

Planning.

The Parish Council Objected to the application below:

Change of use of land from storage of marquees & associated equipment to storage & use of containers for rental purposes.

Crossing Gate Farm Ref 20/0096/FUL.

Submitting the following comments 'The entrance to Crossing Gate Farm, is on a blind bend with poor visibility. The visual impact on the surrounding area would be detrimental as it is located in countryside not an industrial site. Previous limits on lorries and traffic have been imposed on a business nearby'

Playing Field

Quotes are being obtained to renovate the Kitchen & Toilets at the playing field & to install CCTV.

The locking/unlocking of the gates commenced on the 29th March 2020, no changes were required due to the COVID 19 pandemic

The play area was closed as per government guidelines, with the field remaining open.

Policies

Risk Management Policy was reviewed with no amendments.

General Information

The parish council was at 88% of budget as at 31.01.2020 (should be 83%), no changes were made.

Rachel Popplewell

Parish Clerk

A PPG Lockdown

The Patient Participation Group PPG working with Collingham Medical Centre CMC has been in lockdown along with you all. There have been no meetings, events, fundraising, poster campaigns or visits to local groups but here is a couple of news items for you.

The NHS App is the first app from the NHS for people across England. Use it wherever you are, day or night.

Apps are not for everyone so you can continue to contact your GP surgery in the usual ways.

Use the NHS App to:

get advice about coronavirus and find out what to do if you think you have it

order repeat prescriptions - see your available medicines, request a new repeat prescription and choose a pharmacy for your prescriptions to be sent to

book appointments - search for, book and cancel appointments at your GP surgery, and see details of your upcoming and past appointments

check your symptoms - search trusted NHS information and advice on hundreds of conditions and treatments, and get instant advice or medical help near you

view your medical record - securely access your GP medical record, to see information like your allergies and your current and past medicines

register your organ donation decision - choose to donate some or all of your organs and check your registered decision

find out how the NHS uses your data - choose if data from your health records is shared for research and planning

For more information visit www.nhs.uk/nhsapp

CMC report a 200% uptake on people using for the NHS App and are encouraging people to sign up for it.

An update on the Collingham Befriending Service;

We have had four new volunteers step forward recently so that is good news to report, and we have now had the service running for year so it is a 'good news' story. We expect that we will see a surge in people wanting some befriending support as the lockdown continues so it's great that we will have volunteers at the ready to take them.

Lockdown Notes from Glenda Sapcey

I wrote the article below for the previous edition of the Eagle Eye which was cancelled. We have made no progress since then only that the stonemasons, Leakes of Louth, have agreed to hold the price for the memorial for us. We have asked for an extension to the time that NK will allow us to provide all the receipts we need to claim the £1000 and hopefully they will do this or we will lose the funding they have allocated to us.

The community spirit that we enjoyed on the fund raising night has far been surpassed by the great community spirit that has sprung up during the lockdown.

It has been amazing to see everyone helping each other whether it be by shopping or checking on others to make sure they have all they need and the sharing and swapping of seeds, plants, recipes and much more. I was sent lots of yeast from China !!! My son translated the instructions and I delivered it to the bread makers of the village. There was a shortage of bread flour so I sent for some the bag was huge it will probably last till the end of this lockdown and the next. I am still delivering the flour if anyone needs more !! I felt sorry for the delivery man he was carrying it on his shoulder like a sack of coal !!!!

I would like to say thanks to Nat and her family at the post office who have kept the village provided. Thank you for all your hard work you have been fantastic.

Thank you to Rodney and Pauline for their cookery advice and I found out I can bake a cake and scones and that I can't make bread and the thing in the corner of the kitchen with a door and knobs on is called a cooker !!

Eagle Hampden Bomber Memorial Fund

The fund raising night that we held at the end of February was a great success and I would like to thank everyone who came and supported the evening. The tickets sold really fast and I know there were others who would have liked to come and join in but we could not exceed the numbers for safety in the Village hall.

The evening commenced with showing the video that we have made telling the story of the night the Hampden Bomber crashed in the village. I would like to thank the young people who were involved with helping me create the video, Michael, Callum, Ross, Erin and Grace, they visited the Bomber Command Centre and found the names of our four airman and they placed a

poppy by the name to remember them. All four airman's war graves have been visited - these are in London, Thurlby, Ashton in Macclesfield and the Newark Cemetery. A big thank you to Simon who put the video together along with the recordings from the villagers who remember that night in 1942 when the plane crashed. We have included the link to the video for YouTube, it is also on the Village Archives website on Facebook.

Singers Kate Fenn and Pete Merrick entertained with songs from the 1940s shows and then wartime songs that got people singing along. Everyone enjoyed the ration box supper (well no one complained) thank you to all the helpers who prepared and filled the food boxes it ran as smoothly as a military operation.

A black market raffle followed by the quiz completed the evening, thank you to Rodney for preparing the quiz and to all who donated raffle prizes and sold the tickets.

Thank you to everyone who helped prepare before the night and on the night to make it a fun community evening.

We raised the enormous sum of £946.29 on the evening thank you for supporting us.

We have won a bid from fundNK for £1000 the fund gives gives money for small community projects.

The current total in the memorial fund with all donations and pledges is £5897.95 and the total we require is £7300.

At the moment we are waiting for the permission from the Diocese to place the memorial in the churchyard, this has been approved in principle and we are waiting for the full permission to be given before we can go ahead any further.

With the current situation we are in it will all be on hold for a while until we get the go ahead and raise the remaining amount.

Once again thank you for all your donations, our evening showed us with our mix of young and old being involved in the project and sharing the evening together there is a good community spirit alive in our village and hope we can all work together over the next few weeks to keep this going.

Stay safe and well everyone
Glenda

The following is a transcript of the introduction to the video, narrated by Erin Compton:

(PTO)

On the evening of the 12th February 1942 a Hampden aircraft set off from RAF Wigsley two miles south west of Eagle to take part in operation Fuller.

Operation Fuller was set up by the Royal Navy to destroy the German battleships which were causing damage to the Atlantic convoys bringing vital supplies to Britain.

Three of these German battleships entered the harbour at Brest for repairs and on the night of the 11th February 1942 made an historic dash to return to Germany along with 66 more battleships and with air cover they reached the Dover Straits virtually undetected.

Although more than 30 torpedo attacks were launched against them not a single hit was achieved.

As a last resort the largest Bomber Command Operation of the war up to that time took place.

242 British aircraft were sent out against the German battle Squadron but all to no avail.

The only damage caused was by mines which hit the ships Sharnhorst and Gneisenau but this was minimal.

It was to this mine laying operation that our Hampden plane part of the Bomber Command operation took off..

The plane was from the Australian Air Force Squadron number 455 which established itself in Britain on the 6th June 1941 at Swinderby in number 5 group.

The four aircrew in the plane were two British and one who was with the RAF but came from South Africa and one from New Zealand.

The plane took off to drop mines but developed engine problems and had to return early to base .

Whilst circuiting the base at Wigsley at 800 feet the Hampden plane dived into the ground at Eagle and caught fire , all four crew died.

All the villagers had to be evacuated as it was known that there were sea mines on the plane.

Later a sea mine did explode causing much damage to the centre of the village as roofs were blown off and windows shattered.

We want to tell the story of our four airmen and dedicate a memorial in the churchyard for them to be remembered with honour.

The link to the video is : <https://youtu.be/-PMUhwuit3U>

Lockdown in Eagle—reflections.

A request was issued to Eagle residents to write their thoughts on how the lockdown has affected their lives, businesses and our community.

Heartfelt thanks to those of you who took the time to write these memories—they are here to be stored for posterity now, and stand as a testament to the fabulous community that is Eagle.

Hello everyone, (from Rev Andrew Vaughan)

Like many of you I have found time to think and reflect about life, the world and the universe over the past 2 months. Unlike the characters in Hitch Hikers Guide to the Galaxy I can't conclude that 42 is the answer to the big questions!

However, I have had some thoughts. My lockdown experience has taught me that perhaps all the rushing around we do, while exciting, isn't the purpose of life. I have found 3 things that have struck me as being important.

First, that the things I miss most are times with family and friends, especially hugs from the grand children. In that though I know I echo most, in realising that is a way to help us to treasure those relationships when we can start to gather again.

Second, while my love of bird watching is known, it has been the renewed realisation of the beauty of our environment, having time daily to enjoy that. As our daily exercise has been walking around Millennium Green in Hykeham, we have got to the point of knowing at which point we will hear different bird song. It has been interesting to see others taking in that beauty as well.

Finally, I have come to realise that the daily routine of prayer offered through Morning and Evening Prayer has created a foundation to my day. I know others have contacted me saying how they have valued accessing these services on the village Facebook group.

We were able to have a nice celebration of VE Day. Living in an odd shaped close, we still managed to have our afternoon tea sat on our drive, listening to Absolute Radio 40s. The radio station played music from the 40s, interspersed with interviews with people who remembered VE Day. It struck me that we are so fortunate in that we can still keep in touch, via phone, video calls etc, whereas a common comment I heard in the interviews was that people often waited up to 3 months for replies to letters.

It was also wonderful to see how the vast majority discovered ways to be together and maintain social distancing. Celebrating but being disciplined.

On my Facebook page I wrote that VE Day reminded us that when the world pulled together a fundamental evil was defeated, perhaps we need to learn from that as we progress forward in the coming months.

As ever, Andrew

Parish Council in Lockdown.

March 2020 we are put into lockdown, as the Clerk to the Parish Council my brain goes into overdrive with questions surrounding the Parish Council, the residents and how we can continue with 'business as usual'?

Legislation was changing daily, as with most businesses, but as a council we have to abide by rules and regulations from Government, being fed down to the Parishes by Local Associations.

The first thing being that due to Social distancing Regulations, the Parish council is unable to meet face to face, lockdown came at the end of the financial year and this in turn brings with it deadlines & time scales to be met. The Parish Council has an internal audit & external audit annually each year to be completed by June, how would this be achieved with Social Distancing Regulations?

Over the first few weeks of lockdown, new legislation was being sent to the Parish Councils every couple of days. As the parish clerk it was my responsibility to digest & convey these to the Councillors of how they could be implemented in our parish council ...lots of reading!

The first hurdle was to arrange a virtual meeting, after numerous discussions we decided on Zoom which was quite radical at the end of March, albeit it is the normal way of seeing our friends, family & colleagues now. This would be to consider how meetings could be conducted in the future and how decision making could be taken without actually meeting. We received a list of possible delegated powers that the council could adopt – this would enable The Council to meet remotely, make decisions either on an email vote or to delegate the powers to the Clerk, Chair & Vice Chair. Audit deadlines have been moved to November, and hopefully the social distancing regulations will be relaxed in time for the audit to be conducted.

Eagle Parish Council was one of the first Councils to conduct a Zoom meeting and to adopt the list of delegated powers, this was fine until cheques needed signing and bills paying, with social distancing regulations this was difficult so the cheque book had to be passed through letterboxes of the Councillors to be signed. This prompted the Parish Council to be 'zoomed' into the 21st century and change to online banking.

Fast forward to June and the Parish Council are continuing to conduct 'business as usual' meetings being held on Zoom, decisions are taken during the meeting or via an email vote. Online banking is being used successfully.

Rachel Popplewell

Parish Clerk

The lockdown is not all bad, I am enjoying the slower pace of life. No rushing to do the shopping on a Wednesday with sitting in a long, slow traffic queue on Dodd. Road. The mad dash round Sainsbury's, and the long slow journey on the way home. Or rushing to have lunch before going to the Art Group at 1pm. Some spring cleaning has been done {I can't tax Rodney too much} he has also done quite a bit in the garden.

The many good friends and neighbours who have been shopping for us and the "bread run"," some of you will know what that phrase means. A big thankyou to you all.

The downside is not seeing friends face to face {except on Zoom} or seeing my children and cooking a meal for them, or cuddling my Great Granddaughter. Or going to the pictures to see a good film.

Some restrictions have been eased and we will soon have more freedom to do the things we like to do. We have all coped well with the situation so here's to us all. Cheers, Pauline

Lockdown Musings by Rosie Richards

Strange times indeed...

It started with stories of an outbreak of unexpected deaths in far off China, which seemed to be related to a new strain of virus. It had happened before and never seemed to affect us much in the West, but this was different. I don't need to tell you how different - the rising death tolls, the selfish panic buying which lead to the consequent shortages of essentials, then the amazing spectacle of teams from all different areas of the British private and public workforces pulling together to build the Nightingale Hospitals in record time.

It has been a horrible and devastating time for many people, I know this. And I feel a bit guilty and self centered, but I'm actually quite content in lockdown. The house is being decorated, without me having to ask, the garden looks the best it has done for several years and I'm free of all the responsibilities (which weren't that many, I admit) that seemed to take up so much time before. And I don't feel bored at all.

I spent this morning clearing out some old paper work which was dated 1992. Then I came across some even older paperwork which had our previous address on it, and we've lived here for over 30 years. Then I came across some paperwork which had my address before the last one on it. What sort of person keeps paperwork that long? Of course I had to make sure I had shredded every item with my old name and address from forty years ago in case it fell into some scammer's hands.

While I was doing all this I noticed that I'd missed some bits of fluff when I'd cleaned earlier, so I had to get the vacuum out again. And while I was doing that I thought I might as well clean the windows as well. When did I last do them? And when did I last change the towels? Was it Tuesday? What day is it today?

By this time it was time for lunch. We usually eat at one so I like to get started at twelve so that I can make sure the salad is nicely presented on the plate.

After lunch of course it's time for the afternoon walk and inspection of the garden and weeding by which time it's time for the coronavirus update. Today it's Matt Hancock on the podium, which is nice. Is it just me, or has anyone else noticed what lovely hands he has?

No, I haven't felt bored at all.



During the lockdown I kept reminding myself that I was not alone and indeed many parts of the world were going through the same situation and my isolation was far from unique. Being particularly vulnerable to this horrible virus by virtue of my age, got me thinking about being at home alone (like many others in the village) but then appreciated being alive...reasonably healthy..warm,.....fairly agile and able to look after my old doggie. It made me count my blessings.

What has also been good is that I am lucky enough to have a fairly big garden so spent lots of time out there pottering or just having a cup of tea and listening to the birds...it really is a wonderful sound. Lockdown also encouraged me to get my art stuff out and start trying to be creative! Reading books was also a nice pastime. I missed my friends but was able to visit one or two where it was convenient to keep the obligatory two metres apart..There's lots of hello and goodbye hugs to catch up on when this strange time ends.

I have been very humbled how people in the village have rallied round for each other...I've had meals delivered..home made cake delivered and shopping delivered..how nice is that? So a very big thank you to those who did that and the regular phone calls...just to say hello and to check I was ok. Nice neighbours too have been in regular contact.

VE was lovely around Hilltop Close...just sitting chatting with neighbours whom I've just waved to in the past so I had the opportunity to have a chat with them..Some drank tea and some of us had wine....(. No guessing who the wine drinkers were!!) If there's was ever a bad time it was listening to the doom and gloomers on tv programmes finding fault with everything the government is trying to do.....I just switch off.

My thanks again to my friends in the village for caring and helping me and others willingly.

We will be back to normal one day people...let's hope it's soon. Stay safe and well and God Bless , Maggie.x

From Natalie in the Post Office:

I was asked to write about how lockdown during the covid-19 pandemic has affected us as a community asset. We are the village shop and post office so here it goes...

It's been a scary, crazy and challenging time! The week before the lockdown was announced the shop went absolutely mad! We had people that we had never seen before coming in grabbing what tinned things they could as if it was the end of the world! There was a real sense of panic in the air, we couldn't restock the shelves fast enough and for the first time, we had to limit the amount of items people could buy to ensure there was enough for everyone.

The queue to get into the cash and carry was something I had never experienced before!! Things that we had never struggled to get hold of, toilet roll, eggs and flour were suddenly out of stock and the cash and carry shelves were completely empty, whole aisles in fact, there was nothing left!

Our fantastic butchers, bakers and fruit & veg supplier worked extra long hours to keep us topped up and we had a record number of veg boxes ordered!!

We closed for a week due to illness and the whole community rallied round to keep services going for people in the village. Carol Wallis took on the newspaper delivery round, Rachel Popplewell took on the community helpline for people that were self-isolating and needed help, the prescription rota team got shopping for people and Jane Wallis took on the veg box delivery! Community Spirit at its finest!

We have had to implement new systems to be able to still operate, a one person in one person out policy, screens up at the tills and reduced hours, a volunteer scheme for deliveries to people that are self-isolating and a daily newspaper delivery service.

The community has been amazing throughout this pandemic. When I asked for volunteers to help the vulnerable, we had over 40 people register their details! People coming to the shop to collect deliveries and drop them off for people without hesitation, with happiness and an overwhelming sense of wanting to help.

People respectful of the one person in the shop at a time rule, not complaining when they have had to wait and queue to get in the shop, people asking how you are and genuinely meaning it, thanking you for staying open, working together to make sure everyone can get what they need.

We are so lucky to live in Eagle, the community really cares for each other and through these unexpected and hard months of covid-19 we have shown just how strong we are together. So thank you, from the bottom of our hearts for supporting the shop, but also for supporting us as a family, because you have really helped us through.

Things are slowly returning to normal, we are extending our hours this week and we can now get eggs and toilet roll (still no luck with flour though!) Thank you Eagle, you are the best. Nat and Paul.

First of all I hope everyone is keeping safe and well through these challenging times and able to adapt to the lockdown.

I think, how you cope doesn't depend on age but on ability. Those with limited movement, needing assistance in daily living, are the ones to be considered, especially if there is no family nearby, and I hope they are receiving the help they need. Those of us in our 80's who are lucky to have good mobility can still occupy themselves in the garden and again become acquainted with the Hoover!

However it is lovely to see smiley faces passing through Church Lane with dog or youngsters. Hearing the bird song so clearly too is something to appreciate.

I don't have a computer but I do know how important they have been at this time. Facebook, I think its called. People have been doing incredible things to raise money to support the NHS and other charities, Captain Tom is known to us all now! People are finding a different way of living—love and care in abundance. We take a lot for granted don't we in our “normal” world?

I just want to thank all those who have made sure, those of us who are restricted, have covered our own needs—especially shopping. And made telephone calls to take away complete loneliness.

Lord please grant peace to all who feel lonely and fearful. Provide for people who live alone, those with no jobs on sufficient income and families needing support.

Jackie

Take a tour of Doddington Hall—from your own home

Take a virtual tour of Doddington Hall & Gardens. Enjoy Doddington Hall & Gardens in bloom from the safety of your own home.

You can now explore the Elizabethan hall and gardens of one of Lincolnshire's most popular visitor destinations from the comfort and safety of your own home. Through a series of videos and social media posts, you can now explore the gardens virtually and enjoy one of the attraction's most popular times of year while it's closed to visitors.

Doddington Hall & Gardens is a much loved family home and it is presently only occupied by its owners, the Birch family: President of Historic Houses, James Birch and wife Claire Birch along with their family. The virtual tour videos, which are recorded and narrated by the estate's owner, Claire Birch, offer a unique view of the hall and gardens during lockdown. The videos also provide an insight into the history and heritage of the estate and allow viewers to glimpse areas which are not normally accessible to the public. In Spring, the spectacular trees and seasonal flowers are in full bloom while birds, bees, ducks and deer thrive across the magnificent country estate.

Owner of Doddington Hall, Claire Birch said: "We love spring at Doddington Hall & Gardens but it's such a pity that the thousands of people who like to come and visit us are having to miss out on some of the sights and sounds which can only be enjoyed at this time of year. "What started as some videos I took while wandering the gardens has become something of an online series and people have sent the most wonderful messages to say how much they're enjoying them. Nature puts on a magnificent showcase here and so it's lovely to share that with people who would normally come and visit us - as well as with people from around the world who've never visited before. "The gardens are extraordinarily peaceful and tranquil and I hope that the videos help to give people a chance to unwind and escape from some of the stresses of life under lockdown.

"Hopefully, we'll be able to welcome visitors again soon, but until then, I hope this is the next-best thing." So far, more than 30 videos have been published on Doddington Hall's YouTube channel as well as on Instagram, Twitter and Facebook. Videos include virtual tours of the West Garden, Kitchen Garden, Water Garden and Nature Trail, as well as videos of some of the wildlife which is roaming freely. Videos have also been shared of the hall's interior including The Great Hall, the splendid views from the rooftop and the Birch family's private quarters.

The Handbag

It was love at first sight. As soon as eye contact was made there was no turning back. He gazed up at her with his soulful brown eyes and Nancy bent down to stroke his ears through the bars. He wagged his tail and pushed his head against her fingers.

'Would you like to take him for a walk?' the attendant asked. 'He's called Henry.'

He was put on his lead and Nancy was handed a little black plastic bag. 'Just in case,' the attendant told her.

She took the lead and they set off. 'Just in case of what?' Nancy wondered.

He trotted along at her side, stopping now and then to sniff and leave his mark, or gaze up at her adoringly.

'Can I take him home?' she asked when they got back.

'We'll need to make sure you're ready first. Here's a list of what you'll need, then we'll do a home visit.'

Nancy ran her eyes down the list. 'Oh! Poo bags!' she said as the penny dropped.

A week later everything was settled and Henry arrived at his new home.

Nancy had been lonely and Henry had been neglected, but now they were very happy together. Happy, that is, except for one thing. The thing didn't bother Henry, but Nancy was having problems coming to terms with the poo bags. Using them didn't bother her, after all, she'd changed nappies in the past which was much worse. It was the having to carry them around afterwards. It just didn't seem very ladylike, and she'd always considered herself to be a lady. But not scooping was definitely out of the question. What if someone trod in it? Or a wheelchair or pram went through it?

She'd noticed that some people threw the full bags into the bushes, but she despised that as much as she despised the people who didn't scoop.

A few days after Henry arrived, Nancy was getting ready for their afternoon walk when a flash of inspiration hit her. She fetched the step stool from the kitchen and took it into the bedroom. Henry watched her as she rummaged around on the top shelf of the wardrobe and produced a handbag.

'Just the thing.' she told him. 'It can come back into use as our dog walking bag.'

They set off as usual to the park with the handbag on Nancy's arm. It had a clip fastener which made it very easy to open, pop the used poo bag inside then snap shut. Perfect !

They both liked the park. Nancy got to exchange greetings and have a chat with the other dog walkers and Henry got to exchange sniffs and tail wags with the other dogs.

Then one afternoon, as they started the walk back towards the gates and waste bin, something suddenly gave Nancy a hard shove from behind. She stumbled and fell awkwardly sideways onto the grass. The boy on the bike stopped, grabbed her handbag and peddled furiously away. Henry barked as loudly as he could and gave chase, his lead trailing behind him, but the cyclist was too fast and his instinct was to run back and guard Nancy.

A younger lady came running over. 'Are you alright? Don't try to get up yet, just take a moment.' She knelt down next to Nancy and took her hand.

'I think I'm alright. Just shaken,' replied Nancy.

The lady helped her up. 'Little thug,' she said. 'I got a good look at him though. My car's here. Your dog can go in the back with mine and I'll drive you to the police station.'

'I'm alright, really,' objected Nancy, 'I don't want to put you to any trouble.'

'No trouble at all,' insisted her rescuer. 'I'm not going to just let him get away with it.'

Henry waited outside in the car with Bella, who was a sleek black labrador. Normally he would have been delighted with the situation, but today he sat to attention, his eyes glued to the police station door, waiting for his beloved mistress to emerge.

Nancy and her rescuer, who turned out to be called Joanne, were taken into a small room and given a hot brown drink described as tea by a kindly but efficient police officer. Joanne described the attack as she had witnessed it.

'And did he manage to take anything?' the police officer asked Nancy, who was beginning to feel better.

'Just my handbag,' replied Nancy, a smile beginning to creep across her face.

'And what did you have in your bag? Not your house keys I hope?' he asked.

'No, not my keys.' She began to laugh. 'I wish I could have seen his face when he opened it.'

She looked at their puzzled faces and as she explained they started to laugh too. The police officer told the desk sergeant as he saw them out and he laughed so hard that Henry could hear it in the car. Then Nancy and Joanne came out, still smiling and got in.

As they drove off, Joanne said, 'I've got several old handbags. Would you like to come to mine to choose a replacement and have a proper cup of tea? Henry and Bella can play in the garden.'

'That would be lovely,' replied Nancy. 'A lady should always carry a nice handbag.'

Telephone
Lincoln 01522 / 684825
Mobile 07850 / 418744

35 Station Road
Thorpe On The Hill
Lincoln
LN6 9BS

CHRIS MARTIN

*Painter & Decorator
Builder*

Specializing in all aspects of building work to properties, including kitchen & bathroom fitting, wall & floor tiling, plumbing, joinery, plastering, laminate wood floor laying & much, much more.

No job too small, so call now for a free quote & friendly expert advice

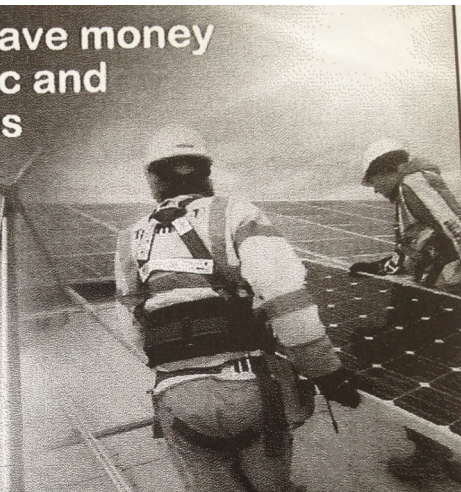
HOME IMPROVEMENTS

PROPERTY REPAIRS

Make electricity and save money with Solar Photovoltaic and Solar Thermal Systems

- PV and Solar Thermal Installer
- Full Design & Installation
- Domestic and Commercial
- PV Solar Panels
- Wind Power Specialists
- All Electrical Work Undertaken

We will talk you through the procedure and work out examples of potential savings on your household energy bills.



EAGLE ELECTRICAL



is an approved MCS Solar PV installer

Call for a FREE quote today:

01522 868072

07966 436944

www.eagleelectrical.co.uk



On The Level Joinery

Stephen Atkinson

07957187443

Ontheleveljoinery81@gmail.com

Free friendly quote
All joinery work
Kitchens.
Doors .skirtings. stud walls.
Flooring. Stairs/balustrades
Fencing. Decking



Taylor Tree Services

Gary Taylor
N.D.A

All aspects of tree and
hedge work
Undertaken
NPTC Qualified

Fully Insured

Domestic and Commercial

24 Fosse Lane
Thorpe On The Hill
Lincoln LN6 9BE

Mobile: 07845720099
tel: 01522 685690
gary.taylor.10@gmail.com



BRITESHINE
CLEANING SERVICES

DOMESTIC | COMMERCIAL | INDUSTRIAL

- Window cleaning
- Gutter cleaning
- Conservatory cleaning
- Fascias and soffits
- Builders cleans
- Patio and driveway cleaning
- End of tenancy cleaning
- Oven cleaning
- Carpet cleaning
- Contract cleaning
- Warehouse cleaning

Call or email for your free no-obligation quote
Tel: 01522 394371 • Mob: 07762 244810 • Email: Brite_Shine@aol.com

GARRY
The Boiler Man

shhh...
save it!

Have your boiler regularly serviced and save money

OFTEC Registered

Evening Tel: 01 522 789840
Mobile Tel: 07946 11 4955

Mark Wood Heating Ltd.
Oil Boiler Specialist
Servicing - Installation - Repairs

OFTEC REGISTERED
Full Central Heating Systems
Boiler Replacements
System Additions & Upgrades
Radiators - Pumps - Controls
Unvented Hot Water Systems
Power Flushing.

01427 628004 / 07703 217875

WILKINS

ESTABLISHED 1895

CHIMNEY SWEEP®

- TRADITIONAL BRUSH AND VACUUM SERVICE
- NESTS REMOVED
- CAGES, CAPS AND COWLS FITTED
- SWEEPING CERTIFICATES ISSUED
- PROFESSIONAL, CLEAN SERVICE
- FULLY INSURED
- POLICE CHECKED

01636 616425

wilkinschimneysweep.co.uk/newark 



Mobile Camper Care

The workshop that comes to you

For a hassle free service by a workshop that comes to you



FOLLOW US ON facebook @MobileCamperCare

Professional, local mobile workshop, caring for your Motorhome, Caravan or Camper at your home, in storage or on-site.

* or if you're thinking of buying a van we also offer Pre-Purchase Inspection allowing you to buy with confidence.

Telephone (01522) 716920 Mobile (07864) 630767

Email mobilecampercare@gmail.com



Chartered Mark of Motor Caravan Inspection Association Ltd



Ian Sheldon Plumbing Services

Oil Fired Boiler
Installation, Maintenance & Repairs

07970 064703

imsheldon36@aol.com



Registered
Business

Boiler Installation/Repair
Full Bathroom Installation
General Plumbing Maintenance



MICK TAYLOR



MOTOR ENGINEER

Established 1982

PROMPT AND RELIABLE SERVICING ON ALL MAKES OF CAR

LAWNMOWERS SERVICED, SHARPENED AND REPAIRED

FLEET SERVICING

MOT PREPARATION

WELDING

EXHAUSTS

BRAKES

LIGHT COMMERCIALS AND DIESELS COLLECTION POSSIBLE

Mobile: 07958 123534

After Hours: 01522 685690

LAND ROVER VW PEUGEOT MERCEDES DAEWOO
 AUDI HONDA MAZDA FIAT RENAULT VOLVO
 MITSUBISHI FORD
 CITREON TOYOTA SEAT VAUXHALL NISSAN

MID Lincs
 Diagnostic, MOT & Repair Centre

Car MOT £29.95

MOT Repairs Servicing Cars, Taxis, Vans Minibuses, Motor Homes

Opening Times
 Mon-Fri 8am-6pm, Sat 8am-13.30pm
 Closed Sundays & Bank Holidays

01522 697400

MARK PHILLIPS
MOTORCYCLE CLOTHING

Newark Road, Lincoln LN5 9EJ

01522 684 662

ENTERING OUR 17TH YEAR OF BUSINESS

SHOP ONLINE AT

WWW.MARKPHILLIPS-MOTORCYCLECLOTHING.CO.UK

SOME OF THE BEST PRICES AROUND FOR ALL STYLES OF
RIDER:
TOURING, SPORTS, COMMUTING, LADIES AND GENTS.
WAX COTTON, TEXTILE AND LEATHER.

PRICES TO SUIT ALL

HELMETS FROM £39.99 - £589.99

JACKETS FROM £24.99 - £499.99

PANTS FROM £49.99 - £379.99

BOOTS FROM £49.99 - £379.99

ACCESSORIES – UNDER GLOVES £4.99

BALACLAVA £4.99

ITALIAN SOCKS £9.99

COME AND SEE US!



Little bot bots

child minding



Ofsted registered childminder, offering a home from home day-care service in Eagle with spaces available now.

Please ring or email Victoria to discuss requirements or to arrange a visit.

Tel: 07789 010452

Email: Victoria@littlebotbots.co.uk

Address: Eagle, Lincolnshire

Scouts



27th Lincoln
Thorpe-on-the-Hill

Providing Scouting for ages 5 – 18
years old

Join our next great adventure.....

For meeting times and enquiries
contact:

Fran Firth
Group Scout Leader

Fran27lincoln.gsl@gmail.com

Or call 07952 480708



Swinderby
Pre-School



A local, friendly Pre-School playgroup run by dedicated, qualified and experienced staff. Ofsted registered & inspected, providing quality care & education to children aged 2 to 5 years (government funding available for those eligible).

Opening times (term time only):

Monday 8am - 3.05

Tuesday 8am - 3.05

Wednesday 8am - 3.05

Thursday 8am - 3.05

Friday - CLOSED

This includes breakfast club 8am-9am and early drop off 8.30am-9am subject to minimum numbers.

For more information, and to see what we can offer your child, please contact us on **01522 869362** or email swinderbyppg@googlemail.com





SING DANCE ACT
Come and join in the fun!!

Saturdays 10am-12.30pm
at
Swinderby Village Hall

Musical Theatre classes taught by friendly
qualified teachers

BALLET TAP JAZZ

Classes on Tuesdays from 4pm
at
Swinderby Village Hall
Ages 3-18

For more information please call:
Danielle – 01522 696100
or Carol – 01522 791898
Visit – www.dancelincoln.co.uk

PETE COWAN

DpT ADI / Fleet
Driver Trainer

RoSPA Diploma in
Advanced Driving
Instruction



**Beginners,
Theory, Advanced,
Defensive & Corporate
Training**

Tel: (01522) 778266
Mob: 07885 106284

Chestnut House, Wigsley Road,
North Scarle, Lincoln. LN6 9HD
e-mail: pete@a1drivertraining.co.uk

Hair by Julie

Mobile hairdressing



Over 20 years' experience

Contact home on 01522 681137

mobile on 07958307000,

email julielynn974@gmail.com

Hair By Angela

*Your Local
Mobile Hairdresser*

*N.V.Q. qualified ladies & gents hairdresser
offering competitive rates and quality
service in your own home*

*Whatever you need from a trim to a perm
Call Angela - she's the girl !*

Angela Martin
35 Station Road
Thorpe-on-the-Hill
01522 684825
07949671917

Body and Sole

The Country Clinic with the Calming Air

Are you feeling stressed? Do you find it hard to switch off? Are you struggling to sleep?



Either a Therapeutic **NO HANDS**® massage or a Reflexology session may be able to help.

Call Sally Smith on the number below or visit www.sallysmith.co.uk to find out more

“My feet are killing me”

If this sounds like you then call to book your appointment NOW!

Pain-free feet are just a phone call away. Most foot problems can be treated quickly and easily, there’s no need to suffer in silence.

Sally Smith

Chiropodist, Reflexologist, NO HANDS® massage Therapist

Body and Sole, Lime Grove Clinic, High St, Harby, Newark, Notts NG23 7EB

01522 704294 or 07974 580 262

Reflexology – helping you to relax and rebalance

Reflexology is a non-intrusive complementary therapy based on the theory that different points on the feet and hands correspond with different organs and systems in the body. Reflexologists work on these reflexes to help re-balance the vital energy in the body, which in turn improves the general feeling of wellbeing, and aids deeper relaxation.

Reflexology may also provide relief from a wide range of acute and chronic conditions, complementing allopathic medicinal approaches.

Using gentle massaging techniques on feet and hands, I have had success in helping my clients with a range of conditions including menopausal symptoms, spinal injuries, sleeping difficulties, autoimmune diseases and arthritic pain.



I have a Centralia Reflexology Mastership (incorporating Agored Cymru Units at Level 5) in Clinical Reflexology and belong to the Association of Reflexologists.

If you would like to find out more or come for treatments, contact me, Jane, on 01522 869094 or 07976 638822 or email jane@balancedreflex.com. My treatment rooms are located in Eagle, Lincoln. www.balancedreflex.com @BalancedReflex

**INDEPENDENT FAMILY
OPTICIAN
FRIENDLY PROFESSIONAL
EYECARE**

**j:d
opticians**

**17/19, Appletongate,
Newark**

- Private and NHS Work
- Eye Examinations available 6 days a week
- Childrens Eyecare
- Home visits available for the housebound
- Contact lens service
- Same day repair service
- On site glazing for most prescriptions
- Large range of frame styles on display
- Expert advice always available

01636 611133
(opposite the Palace Theatre)



Full Grooms, Clipping, De-Shedding,
Wash & Blow Dry, Nail Trimming,
Parasite Removal,
Puppy Introductory Sessions,
Pick Up & Drop Off Service and so much
more!

Full Grooms starting at £35
Wash & Blow Dry starting at £20
Contact us today to book your appointment
or more information!

(01636 626411 (07568 990991
: www.thomasdoggrooming.com

Lucas Court, Fenton, Newark, NG23 5DE

Wet or Dry Grooms, Clipping, De-
Shedding, Claw Clipping, Kitten Introductory
Sessions, Pick Up & Drop Off Service and so
much more!

Grooms starting at £45

*Thomas' Professional Cat Grooming is
the feline department of Thomas'*

Professional Dog Grooming

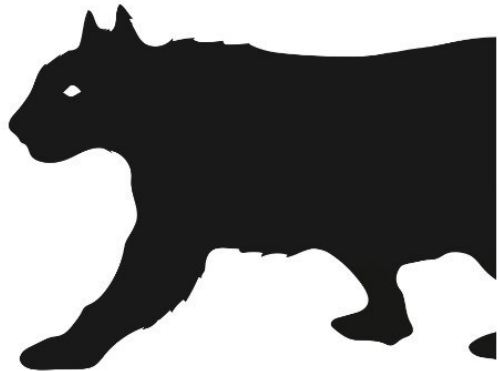
Contact us today to book your appointment
or more information!

(01636 626411 (07568 990991
: www.thomasdoggrooming.com

Lucas Court, Fenton, Newark, NG23 5DE

Folly Farm Cattery

Opening times:
Mon - Fri:
9am - 11am | 4pm - 6pm
Saturday:
9.30am - 12.30pm
Sunday & Bank Holidays
9.30am - 12pm



Folly Farm, South Scarle, Newark NG23 7JR
Call 01636 892042 or email follyfarmcattery@gmail.com

Your local trusted Independent Mortgage Advisor

Established in Lincoln for
nearly 30 years, specialising in

- MORTGAGES
- PERSONAL PROTECTION
- REMORTGAGES
- PROPERTY INSURANCE
- BUY TO LET
- EQUITY RELEASES

Call today and arrange a meeting in our
office in the Bailgate or at your home



FINANCIAL SERVICES

10 Gordon Road
Bailgate
Lincoln LN1 3AJ

01522 511177

SW Financial Services are authorised and regulated by the Financial Conduct Authority.
Your home may be repossessed if you do not keep up with your mortgage repayments.

Eagle Eyes Book keeping Services

Fully Qualified Freelance Book Keeper

Do you spend most of your quality spare time doing bookwork?

If the answer is Yes, then let me Help!

I provide a professional, friendly and reliable service at a very competitive rate. Reducing your workload—so you can relax.

Call Vicky Aldous:-
07799467189
01522 868790



Michael Waterton

Cavendish, 12 Church Lane, Eagle LN6 9DJ
Tel: 07765 910281

Mick the Stitch,

a Saville Row-trained tailor, now working from home is able to undertake all types of alterations.

✂ Suits

✂ Top Coats

✂ New Zips

✂ Wedding and Bridesmaid dresses, boys' waistcoats



✂ Jackets, Trousers, Vests

✂ Leather and Motorbike gear

✂ School Uniforms

✂ Mother of the Bride outfits



Dog Handling Security Services

Asset Protection - Farm Security - Shows & Events -
Residential Security - Wedding Venues - Business Security

Ex Police with over 10 year's experience in Security Services.
Professional & reliable Dog handling teams & Individual handler
for businesses and personal requirements. Public Liability. Fully insured.
Contact: Mel Bond - 07597 311927 - Email: melvyn.bond@yahoo.co.uk

TIGERTECH



ICT SOLUTIONS

Computer/tech gadget support
delivered directly to your own
home or small business

- Computer and mobile device maintenance and repairs
- Virus and spyware removal
- Data recovery
- Data backup
- PC health check / tune-up
- IT buying advice
- New and used PC sales
- On-site and remote support

Please contact Geoff Jones

T: 07305 729808

E: support@tigertech-ict.solutions



Powell Legal Consultancy

Providing solutions, cutting costs

Wills and Powers of Attorney



Local personal service
Competitive fees
Legally qualified Will Writer (LLB Dip LP)
FSWW

Free home visits

Call: 01522 306326/0778 658

5728

Email:

liz@powelllegalconsultancy.co.uk

www.powelllegalconsultancy.co.uk

Member of Society of Will Writers –

Fully Insured

Old Chandlery Apartments

Do you have friends or relatives visiting?

Not enough bedrooms or sofa-space?

We can solve your problem...

We offer a bed and breakfast solution combined
with the luxury of a small serviced apartment.

Visitors can relax and cater for themselves
(Continental / English breakfast ingredients included)
in a quiet, rural setting - plenty of off-road parking.

Please call Jane on **01522 868123** for
details, prices and information.

Old Chandlery Apartments, Morton, Swinderby.
jane@ocapartments.co.uk www.ocapartments.co.uk

FIREWOOD SUPPLIES
TO TRADE AND PUBLIC

HARDWOOD and SOFTWOOD

COMPETITIVE PRICES

CONTACT: JEFF

01522 691627

MOB: 07794 354787

FAMILY BUSINESS ESTABLISHED OVER 30 YEARS
VAT NO 570912148

TIGER HIRE

www.tigerhireuk.com

TEL 01522 869641



Marquees & Party Tents
Framed / Traditional
50 - 350

Catering Equipment

Bouncy Castles & Slides
Children / Adults / Fetes etc

Portable Toilets
suitable for
Parties &
Construction site use

Corporate or
Private Functions

THE STRUGGLER INN

AT 42 HIGH STREET

"Your local, family pub"

OPEN WEEKDAYS FROM 4PM
SATURDAY FROM 2PM
SUNDAY FROM 12PM

TEL: 01522 861873

EMAIL: DONNA@THESTRUGGLERINN.COM | WWW.FACEBOOK.COM/THESTRUGGLER



DODDINGTON
HALL &
GARDENS

GARDENS OPEN DAILY 10AM-4PM
ADULT £7.50, CHILD £3.50, FAMILY £19

Farm Shop open daily 10am-4pm
CHAT + COLLECT: Please call 01522 688581

Giant Lincoln Bike Shop
open daily 9am-5pm (Sun 10am-4pm)

PLEASE FOLLOW SAFETY MEASURES IN PLACE

DODDINGTONHALL.COM



WHITE HART VILLAGE INN

2 High Street, North Scarle, Lincoln. LN6 9EP Tel.-01522 778924.

E Mail: - info@whitehartnorthscarle.co.uk  The White Hart Village

Pub and Restaurant

OPENING and FOOD SERVICE TIMES.

Our opening hours from **Easter 2017** are as detailed below, this now includes opening 7 days a week and serving food at lunchtimes as well as in the evenings. (except Sunday evening)

	OPENING TIMES	FOOD SERVICE TIMES
Monday to Thursday	12noon until 2.30pm & 5pm until 11pm	12 until 1.45pm & 5pm until 8pm
Friday & Saturday	12 noon until 12 midnight	12 until 1.45pm & 5pm until 8.30pm
Sunday	12 noon until 10.30pm	12noon until 4pm (Carvery Only)

It is advisable to reserve tables in advance to avoid disappointment.

2courses FOR 10pounds

We have introduced a new menu served lunchtimes 12 until 1.45pm and from 5pm until 6.30pm Monday to Saturday. This offers you 2 courses for ONLY £10 per person. Choose either a starter or dessert along with your main course.

IDEAL FOR THOSE LOOKING FOR A LIGHTER MEAL

PIZZA TO "EAT IN" OR "TAKE AWAY"

We have now introduced our a new pizza menu. All pizza's are freshly made on the premises and cooked in our stone based pizza oven. Why not drop in, order a pizza to take away and enjoy a quick refreshment while your pizza is freshly prepared. The pizza menu offers a range of traditional toppings or if you prefer you can create your own pizza to include your favourite toppings.



SUNDAY CARVERY served 12 until 4pm

Roast Beef (Medium Rare or Well Done), Leg of Lamb, Breast of Turkey, Pork and Gammon, Homemade Yorkshire Pudding, Fresh selection of vegetables Roast & Mashed potatoes. Fish & Vegetarian options available.

"THE BEST SUNDAY CARVERY IN THE AREA"



QUIZ EVENING

EVERY OTHER TUESDAY. STARTS 8PM.
GENERAL KNOWLEDGE. £1 PER PERSON.



"THE QUIZ FORMAT THAT GIVES EVERYONE A CHANCE TO BE A WINNER"

PLAY YOUR CARDS RIGHT

FREE SANDWICHES & CHIPS

CASH PRIZES & ROLLOVER

QUIZ DATES 28th March, 11th April, 25th April

Gift Vouchers/Carvery Vouchers

Not sure what to buy someone for a present.

Then why not give them a "WHITE HART GIFT VOUCHER" to spend on a meal and refreshments.

Vouchers can be for any value you wish.

call CONNECT

CALL. CLICK. CONNECT

YOUR FLEXIBLE BUS SERVICE

Free to Register

Simply call us or go online to receive your membership number. It's that easy.

Book Your Journey

Give your membership number and journey details to our booking agent and we'll do the rest. You can also request your journey online 24 hrs a day.

Hop on the CallConnect Bus

Pay your fare, show your saver ticket or concessionary bus pass and enjoy the journey!

0345 234 3344 - LINCOLNSHIRE

0345 263 8153 - STAMFORD AREA

LINCSBUS.INFO



Service operates:
Monday - Friday 7am - 7pm
Saturday 7:30am - 6:30pm

Lincolnshire
LOCAL GOV. UNITS
Working for a better future

Monday to Saturday

Lincoln Bus Station, Stand N	06:40	09:00	11:00	13:00	15:00	17:00
Lincoln Debenhams	06:44	09:03	11:03	13:03	15:03	17:03
Lincoln, Valentine Retail Park	06:46	09:06	11:06	13:06	15:06	17:06
North Hykeham, Asda Layby	06:52	09:20	11:20	13:20	15:20	17:20
North Hykeham Station Cross roads	06:55	09:22	11:22	13:22	15:22	17:22
North Hykeham Pennells	06:58	09:25	11:25	13:25	15:25	17:25
Thorpe on the Hill, Post Office	07:02	09:30	11:30	13:30	15:30	17:30
Whisby, Thorpe Rd	07:06	09:34	-	13:34	-	17:34
Eagle Moor, Telephone box	07:09	09:36	-	13:36	-	17:36
Eagle, Primary School	07:11	09:38	-	13:38	-	17:38
North Scarle, Eyres Lane	07:17	09:43	-	13:43	-	17:43
Swinderby, Railway Station	07:22	09:48	-	13:48	-	17:48
Swinderby, The Plough	07:25	09:53	-	13:53	-	17:53
Witham St Hughs, Greenfinch Cres	07:35	10:03	11:43	14:03	15:43	18:03
Witham St Hughs, Juniper Way	07:38	-	-	-	-	-
Witham St Hughs, Juniper Way	07:40	-	-	-	-	-
Witham St Hughs, Greenfinch Cres	07:44	10:03	11:43	14:03	15:43	18:03
Swinderby, The Plough	-	-	11:52	-	15:52	-
Swinderby, Railway Station	-	-	11:57	-	15:57	-
North Scarle, High Street	-	-	12:02	-	16:02	-
Eagle, Primary School	-	-	12:07	-	16:07	-
Eagle Moor, Telephone box	-	-	12:09	-	16:09	-
Whisby, Thorpe Rd	-	-	12:11	-	16:11	-
Thorpe on the Hill, Post Office	07:50	10:15	12:15	14:15	16:15	18:15
Pennells	07:57	10:19	12:19	14:19	16:19	18:19
North Hykeham Station Cross roads	08:00	10:22	12:22	14:22	16:22	18:22
North Hykeham, Asda layby	08:03	10:25	12:25	14:25	16:25	18:25
Lincoln, Valentine Retail Park	08:23	10:39	12:39	14:39	16:39	18:39
Lincoln Bus Station, Stand N	08:35	10:50	12:50	14:50	15:50	18:50

NOTICE FROM LINCOLNSHIRE HIGHWAYS DEPT: **REPORTING HIGHWAYS ISSUES**

All highways issues should be reported via www.lincolnshire.gov.uk/faultreporting. The online system is the quickest and easiest way to report problems and is available 24/7.

However, you can also raise matters via customer services (by calling 01522 782070 or emailing cschighways@lincolnshire.gov.uk) or by contacting your local county councillor.

While we realise that you may prefer to speak to the local highways officer directly, we need them out dealing with highways issues not in the office on the phone. For more complex, ongoing issues, you can request an annual meeting with your local member and the highways team.

In addition, my support councillor, Cllr Perraton-Williams, and I are currently committed to visiting each parish and town council with the local highways team.

I can assure you that all issues reported will be dealt with.

Kind regards CLLR RICHARD DAVIES

EXECUTIVE COUNCILLOR FOR HIGHWAYS, TRANSPORT AND IT

Useful phone numbers, email addresses and websites

NEIGHBOURHOOD POLICING

Sgt Kenneth Whyte your Community Beat Sergeant, North Hykeham Police
kenneth.whyte@lincs.pnn.police.uk

Hykeham Rural Villages Email : EMAIL: hykehamrural.npt@lincs.pnn.police.uk

Facebook : <https://www.facebook.com/HykehamPolice>

@HykehamNPT

Community Beat manager PC Mark Wood 07973 846976

PCSO Sarah Lingard 07973 842 364

Report Potholes 01522 782070

<http://www.lincolnshire.gov.uk/faultreporting> 01522 782070

Report Litter 01529 414155

Adult Concern 01522 782151

Report fly tipping

<https://www.n-kesteven.gov.uk/residents/waste-recycling-and-environment/report-or-request-a-waste-service/>

Non urgent police and medical

Health 111 Police 101

Transport and Travel

Call Connect 0845 234 33 44 or 01522 553143

8.30am - 7pm Weekdays and to 5pm Saturdays

Dial a ride 01522 544983 Disabled door to door

Car-sharing www.lincshare.co.uk

Trains www.thetrainline.com

Roadworks

roadworks@lincolnshire.gov.uk

To receive info on twitter #lincscs_roads

Report **illegal parking** 01522 511142 or email

ParkingServices@lincolnshire.gov.uk

Parish Council website www.eaglevillage.co.uk

Information from Lincolnshire County Council : **Highways contact details and useful information**

A few things we don't deal with:

We look after the majority of issues within the highway but there are some that we don't:

Foul sewers and water leaks

Anglian Water www.anglianwater.co.uk

Severn Trent Water www.stwater.co.uk

Mud on the Road

Lincolnshire Police **Call 101**

Street name plates, dog fouling, litter, street cleansing and fly tipping on the Highway

City of Lincoln Council www.lincoln.gov.uk

Boston Borough Council www.boston.gov.uk

East Lindsey District Council www.e-lindsey.gov.uk

North Kesteven District Council www.n-kesteven.gov.uk

South Kesteven District Council www.southkesteven.gov.uk

South Holland District Council www.sholland.gov.uk

West Lindsey District Council www.west-lindsey.gov.uk

To report a fault

A fault is something wrong with the highway network that requires fixing.

Typical examples are potholes, street lights that are not working and broken or missing drain covers. The best way to report a fault is to log it on the web portal

at www.lincolnshire.gov.uk/faultreporting

To enquire about highways services

Typical examples include when will the road improvements in my area be carried out.

There is lots of useful information on our web pages at www.lincolnshire.gov.uk/transport-and-roads

If you can't find what you are looking for or the enquiry is about something very specific please email us at cschighways@lincolnshire.gov.uk

Keep up to date with roadworks

Visit www.roadworks.org to find up to date information about all roadworks carried out by Lincolnshire County Council and utilities such as Anglian Water.

To talk to us

Our Customer Service Centre number is 01522 782070

Our Service Centre Advisors can help with a wide range of questions and can look up what action has been taken with reported faults and enquiries between 08:00-8:00 Monday to Friday.

If you have a highway emergency outside of these times please call Lincolnshire Police on 101

Learn more about services we provide

To find information on all our services for example grass cutting, street lighting, grit bins, patching and surface dressing visit

www.lincolnshire.gov.uk/transport-androads/highways-maintenance/

You can also view our programme of works for the current financial year and download our publications and policies.

Follow us on Twitter

You can follow us on Twitter. We regularly tweet roadworks updates, incident details and in the winter when we are gritting.

[@LincsCC_roads](https://twitter.com/LincsCC_roads)

EAGLE VILLAGE HALL - HIRE CHARGES

1st December 2019

VILLAGE RESIDENTS

Sunday to Thursday £8.00 per hour

NON-RESIDENTS

Sunday to Thursday £10.00 per hour



VILLAGE RESIDENTS

Fridays & Saturdays - Daytime up to 6pm £8.00 per hour

Evenings £13.00 per hour

NON-RESIDENTS

Fridays & Saturdays – Daytime up to 6pm £10.00 per hour

Evenings £13.00 per hour

(a £100 refundable deposit is required for evening bookings)



FURNITURE HIRE – Residents only (per day)

Large Tables £2.00 each, Small Tables £1.50 each, Chairs £1.00 each



Set-up Time (before 6pm) – Charged at day rates

Minimum booking period 1 hour - Bookings must be for the total time the hall is in use. (Please include preparation & clear up time.)

Eagle Village Hall are LICENSED PREMISES for the consumption of Alcohol. The Village Hall Committee is the licensee of these premises and you will need permission from the committee to sell or supply alcohol, our licence regulations must be observed & costs may apply.

Please contact us for details.

**TO BOOK THE VILLAGE HALL OR TO ARRANGE A VIEWING
PLEASE CONTACT – Jackie Jinks 01522 868418**

THE EAGLE EYE

Editor Jane Wallis, 15 Church Lane, Eagle LN6 9DJ
01522 869094 janewallis41@btinternet.com

Treasurer Please contact Jane Wallis as above

Distribution Mike Waterton 01522 869876

Advertising Rates (6 issues)

Half page	£40
Quarter page	£25
Small ads (text only)	£3
One-off advertisements	Please contact the treasurer for details
Family announcements	Free
Diary entries	Free

Publication date 1st week in February, April, June, August, October, December

The views expressed in the magazine represent those of the individual contributors and not necessarily those of the Editor. Readers are advised to take their own precautions before entering into any agreement with advertisers to obtain goods or services.

Village Facebook Pages

‘Eagle Local Information and What’s On in our Village’ - for posting information re events in the village, weekly groups/ clubs, useful numbers, suspicious activity etc.

‘Eagle Sales and Wants’ For those looking to sell or gift items and others who are looking for that specific something.

‘Eagle & Swinethorpe Parish Council’ for notices from the Parish Council



USEFUL TELEPHONE NUMBERS

Collingham Medical Centre	General Enquiries	01636 892156
Collingham Pharmacy		01636 893038
Community Beat Team	See inside	Page 6
Eagle Bowls Club	Ted Coulson	704340
Eagle Indoor Bowls	Roger Bishop	869557
Eagle Post Office		868212
Eagle Primary School		868354
Eagle Churchwardens	Sue and Chris Stiles	869296
OAP Party Fund	Roy Bell	868567
Parish Clerk	Rachel Popplewell	Parishclerk@eaglevillage.co.uk
District Councillor NKDC	Cllr Sally Appleby*	07714 271450
Playing Field Committee	Parishclerk@eaglevillage.co.uk	
Village Hall Bookings	Jackie Jinks	868418
Village Hall Committee	Simon Spear	869490
Village Produce Ass'n	Clare Evans	07825 160985
Village Website		www.eaglevillage.co.uk
200 Club	Rodney Fagg	869123
Fellowship Lunch	Jean Roberts	868797

*Cllr Appleby's email address is cllr_sally_appleby@n-kesteven.gov.uk

If you would like your telephone number added to this list or any of the above are incorrect please contact the Editor on 869094 or janelwallis41@btinternet.com

EAGLE & SWINETHORPE NEIGHBOURHOOD WATCH CO-ORDINATORS

Marion Bell , 34 Hilltop Close, Eagle	868567
Jon Faiers , Fallowfields, Doddington Road, Whisby	694352
Sue Ross , 7 Kestrel Rise, Eagle	868411

Publisher accepts no responsibility for the validity of any of the advertisements.
Printed by Pott Morton Printers, Lincoln