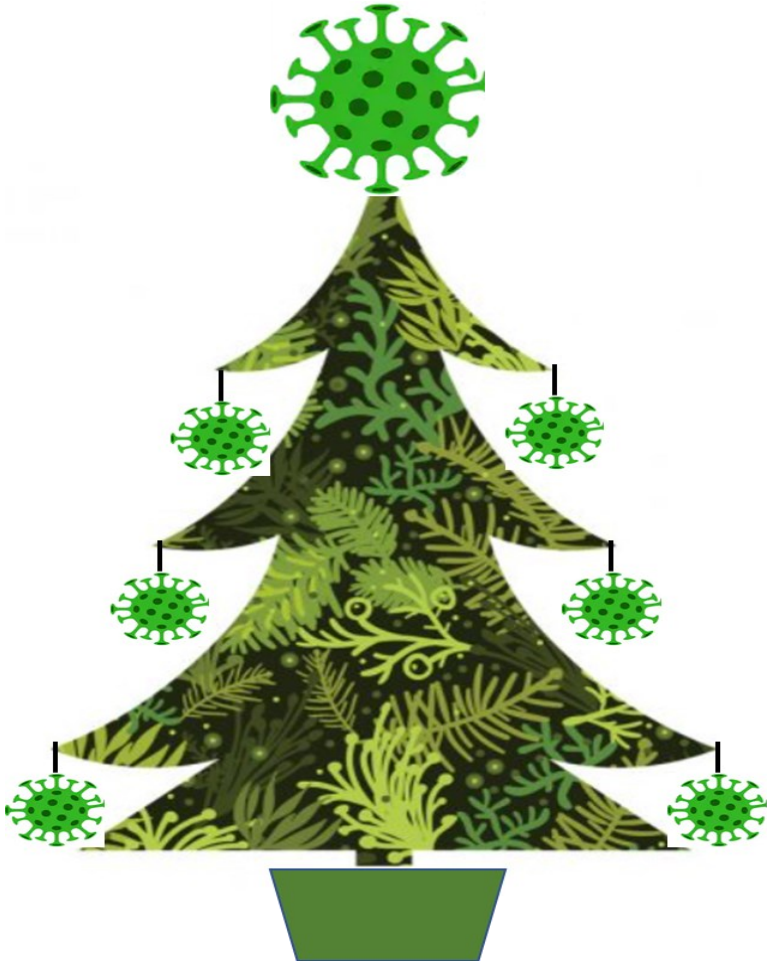


Issue 354

Dec '20 / Jan '21

# THE EAGLE EYE

The logo for 'THE EAGLE EYE' features a stylized eagle's head in profile, facing right. The eagle's eye is a large, detailed black and white illustration of an eagle's eye, which serves as the letter 'A' in 'EAGLE'. The words 'THE', 'EAGLE', and 'EYE' are stacked vertically in a serif font, with 'THE' being smaller and positioned above 'EAGLE'. The eagle's beak is a simple black line.

The next issue of the Eagle Eye will appear at the beginning of February 2021

Please send in your contributions before the copy deadline - **Friday Jan 22nd**



High Street  
Collingham  
Newark NG23 7LB  
Tel: 01636 893038  
Email: collingham.pharmacy@nhs.net

**CHRISTMAS 2020**  
**PHARMACY OPENING HOURS**

Monday 21 December – 8.45 am – 6.30 pm Tuesday 22 December – 8.45 am – 6.00 pm Wednesday 23 December – 8.45 am – 6.00 pm Thursday 24 December – 8.45 am – 6.00 pm Friday 25 December – <b>CLOSED</b> Saturday 26 December – <b>CLOSED</b>	Monday 28 December – <b>CLOSED</b> Tuesday 29 December – 8.45 am – 6.00 pm Wednesday 30 December – 8.45 am – 6.00 pm Thursday 31 December – 8.45 am – 6.00 pm Friday 1 January – <b>CLOSED</b> Saturday 2 January – 9.00 am – 12.30 pm
----------------------------------------------------------------------------------------------------------------------------------------------------------------------------------------------------------------------------------------------------------	-------------------------------------------------------------------------------------------------------------------------------------------------------------------------------------------------------------------------------------------------------

*(Closed between 1.00 pm and 2.00 pm every day)*

When this Pharmacy is closed, if you urgently need medical help or advice but it's not a life-threatening situation contact NHS 111.

Information can also be accessed at [www.nhs.uk](http://www.nhs.uk)

Website: [www.collinghammedicalcentre.co.uk](http://www.collinghammedicalcentre.co.uk)

**PRESCRIPTION ROTA**

9th Dec	Clare Kelly	07847 966803
16th Dec	Jane Wallis	869094
23rd Dec	Lynda Williams	869225
30th Dec	Rodney Fagg	869123
6th Jan	Mari Dawson	868310
13th Jan	Angela Stewart	07969 428167
20th Jan	Betty Spackman	869676
27th Jan	Clare Kelly	07847 966803
3rd Feb	Jane Wallis	869094
10th Feb	Lynda Williams	869225

# WHAT'S ON for the remainder of 2020.



Tuesday 1st Dec	Parish Council Meeting	7:30 pm
Monday 14th Dec	School Raffle draw	
Tuesday 15th Dec	Church collection for Nomad Trust	2-4 pm
Thurs 24th Dec	Midnight Mass at Eagle Church	9:00 pm
Sat 10th April	VPA Spring Show	
Sat 11th Sept	VPA Autumn Show	

# All Saints Church, Eagle

## Services for December

Sunday 20<sup>th</sup> Holy Communion 10.30a.m.  
Christmas Eve 24<sup>th</sup> Midnight Mass 9.00p.m.

## Services for January 2021

Sunday 17<sup>th</sup> Holy Communion 10.30a.m.

## Hats, Scarves and Gloves

We are collecting again this year hats, scarves and gloves for The Nomad Trust. If you wish to donate any of the above please wrap and label what is inside and for man, woman, girl or boy. The Church will be open for collection on Tuesday 15<sup>th</sup> December, 2 – 4pm. or at the Church Service on the 20<sup>th</sup> December. Thank you.

## Remembrance Sunday

There was a very well attended group of people at the Memorial Arch, all socially distanced, for the Act of Remembrance on 8<sup>th</sup> November. It is a pity we couldn't gather closer afterwards to make it more sociable.





## Editor's Note

Hopefully, as you read this we will be freshly out of the second lockdown this year—it's been four weeks but somehow it seemed harder than the long spring lockdown, having been given a taste of freedom since July. We are so fortunate to be in a small village where everyone is looking out for one another and being sensible.

Eagle School is continuing to keep the community mingling with safe and fun fundraising activities—keep an eye out for raffle tickets on sale from the Village Shop.

Last minute good news is that the VPA have scheduled their Spring and Autumn shows—so much should have changed for the better by April and we will be looking back on 2020 with relief that its over.

If you have clothes to go to charity, there is the easy option of donating them to School—see the FOES newsletter on P21 for details.

I'd like to thank the Eagle Eye team for keeping going through the year—I'm not proud that the only edition to ever be missed happened on my watch—but in mitigation there hasn't been a global pandemic in the Eagle Eye's lifetime. So many thanks to the distributors, to Mike Waterton for delivering to them, and to Anne Rogers for keeping the funds in order.

Seasons Greetings to all of the advertisers, and lastly wishing a peaceful and safe Christmas and New Year to you lovely readers.

Very best wishes

Jane

## Collingham PPG Still in Lockdown...

The Patient Participation Group (PPG) working with Collingham Medical Centre (CMC) is still affected by lockdown just like the rest of us so all activities and events are on hold. Hopefully 2021 will herald better times with the advent of a vaccine.

The PPG has welcomed 2 new members and there is a vacancy for one more. Meetings are normally held once monthly at CMC but currently by Zoom as we all isolate as far as possible. We are also seeking a Treasurer. Our previous Treasurer has put everything in place so if you could offer a couple of hours each month we would be delighted to hear from you. Please contact us on [collinghamppg@gmail.com](mailto:collinghamppg@gmail.com) or via CMC.

We are hoping to carry out a poster campaign regarding reminders for safety during this COVID-19 situation. Posters will shortly be placed on public notice boards in all the villages served by CMC.

### **Practice News**

CMC have welcomed three new staff members; Kira to the Patient Care Advisory Team along with Josh to the Pharmacy. Caitlin (who you'll know from the Pharmacy) will start her training as a PCA over the next few months.

The Flu Clinics have run very smoothly this year with patients being prepared before arriving in the Consulting Rooms - an amazing 1000 patients being vaccinated in the last six hour clinic.

Flu clinics for 50-64 year old age group are planned; details will follow as soon as confirmation of vaccine delivery is received.

Opening Hours of the CMC and Pharmacy remain usual hours – only a shortage of team members will influence a review of service opening times to remain safe. CMC and the Pharmacy will be closing for the four day December Bank Holiday 25 – 28 December 2020 – Re-open 8.00 am Tues, 29 December – it's important to rest the whole site team. A well deserved break! Details of emergency Pharmacies open in the area will be posted on the Pharmacy door for information over the Bank Holiday.

### **Prescription Delivery**

Deliveries are still available for those who qualify. You can pay a subscription to have your prescription delivered if for convenience, please contact Pharmacy for details.

Collingham Village Care also will collect a prescription for you, alongside the volunteer services running in Swinderby and Eagle.

## Keeping in touch

The CMC are providing updates on services at the 'Collingham Community Conversation' which runs once a month on a Thursday evening, 6.30-7.30pm. The next one is on Thursday 10<sup>th</sup> December 2020. You can join by Zoom, or you can watch on YouTube or Facebook. For more information please contact us via the gmail address above and we will send you the Zoom links

The PPG wish you all a safe Christmas and look forward to a brighter situation in 2021.

## The British Legion Poppy Appeal.

On behalf of the British Legion I would like to say a massive thank you to everyone for your very generous donations.



The total collected for this district this year was £1237.66.

Thanks again

Marion Bell.





## **Ian Sheldon Plumbing Services**

Oil Fired Boiler  
Installation, Maintenance & Repairs

**07970 064703**

imsheldon36@aol.com



Boiler Installation/Repair  
Full Bathroom Installation  
General Plumbing Maintenance

## **Lock Matters**

Small, Friendly, Mobile Locksmiths

Lock Openings

Locks Fitted

UPVC Door Specialist

Call Ian on 01522 681697 or  
mobile 07949 293134

8 Tacitus Way North Hykeham LN6 9ZE



Telephone  
Lincoln 01522 / 684825  
Mobile 07850 / 418744

35 Station Road  
Thorpe On The Hill  
Lincoln  
LN6 9BS

# CHRIS MARTIN

*Painter & Decorator  
Builder*

*Specializing in all aspects of building work to properties, including kitchen & bathroom fitting, wall & floor tiling, plumbing, joinery, plastering, laminate wood floor laying & much, much more.*

*No job too small, so call now for a free quote & friendly expert advice*

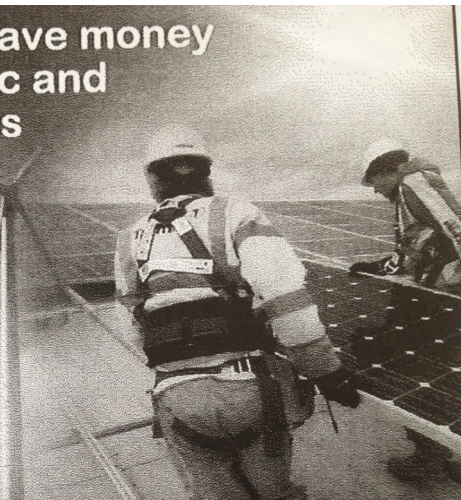
HOME IMPROVEMENTS

PROPERTY REPAIRS

## Make electricity and save money with Solar Photovoltaic and Solar Thermal Systems

- PV and Solar Thermal Installer
- Full Design & Installation
- Domestic and Commercial
- PV Solar Panels
- Wind Power Specialists
- All Electrical Work Undertaken

We will talk you through the procedure and work out examples of potential savings on your household energy bills.



# EAGLE ELECTRICAL



is an approved MCS Solar PV installer

Call for a FREE quote today:

**01522 868072**

**07966 436944**

[www.eagleelectrical.co.uk](http://www.eagleelectrical.co.uk)

## **Hello everyone,**

I write these notes a few days into Lockdown 2, when we are all adjusting to the restrictions on our normal activities and social engagements. I hope that when we come out of this period that some simple forms of relating to each other can bring some light and joy into our lives.

While things are unclear about the future length of these restrictions we are still preparing for Christmas, both in our homes, and for us in Church. One thing for certain we will all be doing things differently this year.

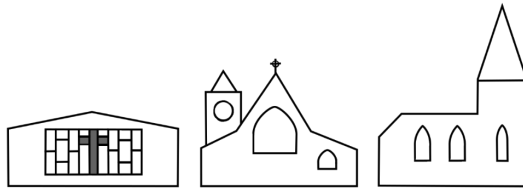
In church we will hope to hold a Christmas service in each of our Churches, As things stand we are planning to have our Midnight Mass at 9pm in Thorpe on the Hill and Eagle, and a 10am Christmas morning at Swinderby and North Scarle. We have brought the Midnight service forward because of the potential continuation of pubs closing at 10am, so an 11.30 would be a long time after that. Obviously, numbers will be limited at these services to about 20-25 in the congregation. Sadly, because there is still the ban on communal singing we will not be able to hold our Carol Services this year. However, we will still be collecting hats, scarves and gloves for the Nomad Trust and will announce on Social Media when each church will be open to drop off these items.

One thing that we were hoping to introduce this year was a Family Crib and Christingle Service at 4pm on Christmas Eve. While we can not do that physically this year we will be holding one online with our partners from the Hykeham Group of Churches. Also, if any children would like to join the online Christmas Holiday Club they are very welcome. Details of these events are on the attached poster. I am sure we have all been experiencing some sense of vulnerability during this past 12 months. Whether from health concerns or from the economic impact of Covid-19. The one thing that Christmas always reminds me of is that through Christ God shares in our vulnerability, for what is more vulnerable than a homeless baby? Sometimes it is in our vulnerability we discover new hope, and new ways to live. So my hope is that as the science starts to lead us out of the pandemic we discover new sensitive ways to live within our world and with each other.

Our churches have always been keen to share something of God's generosity at Christmas. Over many years Swinderby and Thorpe on the Hill churches have collected toys for children who would otherwise not have any at Christmas. Also, last year we collected hats, scarves and gloves for the Nomad Trust to share with people who were homeless.

We hope to continue these appeals this year, and appeal for donations to either. Thorpe and Swinderby Churches will be open sometime on Friday December 4th to receive toys. Then North Scarle and Eagle Churches will open at some point w/c December 7th for hats, scarves and gloves.

As ever,  
Andrew



# **Christmas 2020**

## **Virtual family services and activities**

**Sunday 20<sup>th</sup>, Monday 21<sup>st</sup> and Tuesday 22<sup>nd</sup> Dec 10-11am**

Churches Together in North Hykeham Virtual Holiday Club

Email [revsarahlawrence@btinternet.com](mailto:revsarahlawrence@btinternet.com) to request a booking form, in order to receive a resource pack and secure zoom link

(booked places only, on zoom only)

### **Christmas Eve 24<sup>th</sup> December**

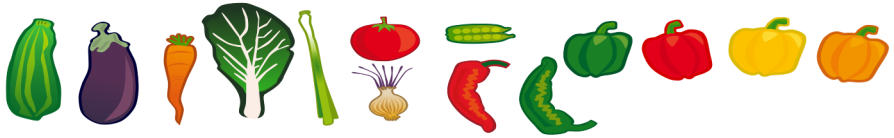
**4pm** Virtual Christingle and Crib service

(by zoom only, come dressed up as your favourite nativity character, and have an orange, ribbon, candle, cocktail sticks and sweets/dried fruit ready to make your own Christingle)

To join on a computer/tablet/phone:

Zoom link: <https://zoom.us/j/119978109>

Passcode: 123

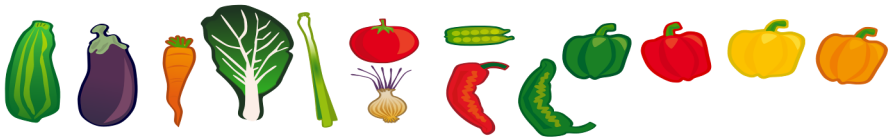


## Eagle Village Produce Association

The committee is very pleased to report that next year's show dates have been agreed : Spring Show 10th April 2021, and Autumn Show 11th September 2021.

Have safe Christmas and Happy New Year—we need one of those!

Clare Evans 07825 160985 / 01522 868825



## **HALL FARM CHRISTMAS SHOP** Newton on Trent, Lincoln LN1 2LL



- ★ **QUALITY CHRISTMAS TREES**  
Nordman Fir, Norway Spruce and Blue Spruce  
Trees available from 27 November - delivery can be arranged
- ★ **TREE AND HOME DECORATIONS**
- ★ **INDOOR AND OUTDOOR LIGHTS**
- ★ **GIFT WRAP AND BAGS**
- ★ **FRESH WREATHS AND HOLLY**

**OPEN EVERY DAY FROM  
WEDNESDAY 18<sup>TH</sup> NOVEMBER**

10am – 5pm

Early morning or late night opening by appointment

Helping you prepare for Christmas in a safe Environment



Tel. 01777 228215 or 07879 885379



# Wright Foot Care

**Richard Wright** TCFCP  
**Foot Health Practitioner**  
**Level 4 Accredited**

Fully Qualified & Insured  
DBS Checked

**Appointments: Mon to Sat**  
*in the comfort of your own home*

Start on the  
**WRIGHT**  
foot



COVID 19  
recommendations  
& guidelines  
adhered to  
throughout  
treatments

## Treatments include:

Nail Trimming • Thickened Nails • Verrucas  
Corns • Callus • Cracked Nails • Ingrown Toe Nails  
Athletes Foot • Fungal Nail • Diabetic Foot Care

**Free Phone Consultation**

**07366 395 307**

@wrightfootcare

ncf

## Reflexology – helping you to relax and rebalance

Reflexology is a non-intrusive complementary therapy based on the theory that different points on the feet and hands correspond with different organs and systems in the body. Reflexologists work on these reflexes to help re-balance the vital energy in the body, which in turn improves the general feeling of wellbeing, and aids deeper relaxation.

Reflexology may also provide relief from a wide range of acute and chronic conditions, complimenting allopathic medicinal approaches.

*Using gentle massaging techniques on feet and hands, I have had success in helping my clients with a range of conditions including menopausal symptoms, spinal injuries, sleeping difficulties, autoimmune diseases and arthritic pain.*



I have a Centralia Reflexology Mastership (incorporating Agored Cymru Units at Level 5) in Clinical Reflexology and belong to the Association of Reflexologists.

If you would like to find out more or come for treatments, contact me, Jane, on 01522 869094 or 07976 638822 or email [jane@balancedreflex.com](mailto:jane@balancedreflex.com). My treatment rooms are located in Eagle, Lincoln. [www.balancedreflex.com](http://www.balancedreflex.com) @BalancedReflex

## Village Hall 200 Club returns!!!

<b><u>EAGLE VILLAGE HALL 200 CLUB</u></b>		
<b><u>WINNERS SEPTEMBER 2020</u></b>		
<b><u>NUMBER</u></b>	<b><u>NAME</u></b>	<b><u>AMOUNT</u></b>
174	MR P BOOTH, JNR	£100.00
31	ERIN COMPTON	£50.00
191	MR J CLEMENTS	£50.00
106	MR D THOMPSON	£20.00
154	MR & MRS SHERIFF	£20.00
140	MISS K CHENNELLS	£20.00
12	MR M HICKSON	£10.00
13	MRS C MUGGLETON-SLEATH	£10.00
65	MR S WILSON	£10.00
67	MR A ROE	£10.00

<b><u>EAGLE VILLAGE HALL 200 CLUB</u></b>		
<b><u>WINNERS OCTOBER 2020</u></b>		
<b><u>NUMBER</u></b>	<b><u>NAME</u></b>	<b><u>AMOUNT</u></b>
126	MRS C JONES	£100.00
176	MRS E SHRUBB	£50.00
111	MRS S JACKSON	£50.00
169	MRS J ROBERTS	£20.00
87	MISS L CHENNELLS	£20.00
118	MR R CLIFTON	£20.00
149	MR & MRS HAYLOCK	£10.00
155	MRS B SPACKMAN	£10.00
75	MR & MRS GODLEY	£10.00
103	MR S SPRAKES	£10.00

# SOUTH CLIFTON REFILL STATION

EVERY SATURDAY 10AM-12PM @ THE RON BEAT PAVILION, SOUTH CLIFTON

Ethically sourced, sustainable and cruelty free household products!

**Bring along your containers and we'll fill them!**

Prices by volume—fill as much or as little as you'd like

Here are just some of the fantastic products available:



NATURAL SHAMPOO

£1.32 per 100ml



NATURAL CONDITIONER

£1.32 per 100ml



BODYWASH

£1.48 per 100ml



MULTI-PURPOSE CLEANER

28p per 100ml



NON-BIO LAUNDRY LIQUID

25p per 100ml



FABRIC CONDITIONER

19p per 100ml



HAND SOAP

48p per 100ml



WASHING-UP LIQUID

22p per 100ml

We also stock a wide range of ethically sourced household items from scourers, sponges and soap dishes to toothbrushes, dental floss and hairbrushes



**CAKE AND REFRESHMENTS ALSO AVAILABLE**

*Pop over for a drink and chat—we'd love to see you!*



For our full product range, check out our Facebook page or come down and see us!



[www.facebook.com/southcliftonrefillstation](https://www.facebook.com/southcliftonrefillstation)

# Helping households save this Big Energy Saving Winter

Citizens Advice Mid Lincolnshire (CAML) covering Boston, Sleaford and North Hykeham, will be helping people reduce their energy bills and save money as part of **Big Energy Saving Winter**.

They will be supporting people across the region to follow three simple steps to prepare for the winter ahead.

**Check** to see if they are eligible for discounts, grants and support

**Switch** their tariff or energy supplier to get the best deal

**Save** money by becoming more energy efficient

Citizens Advice Mid Lincolnshire are offering individuals and groups the chance to join in with a specially designed online presentation that will lead you through the check, switch and save messages.

As Big Energy Saving Winter 2020 kicks off, new research shows that one in three (35%) bill payers say they are using more energy than they usually would at this time of year.

Energy is an essential service and everyone should be confident they can adequately heat their home and protect their health. It's crucial no-one is paying more than they need to for their energy especially during this global pandemic when many of us are spending more time at home.

For more information and to book a presentation please

email: [events@citizensadvicemidlincs.org.uk](mailto:events@citizensadvicemidlincs.org.uk)



**We give people the knowledge and confidence they need to find their way forward whoever they are, and whatever their problem**



# SPEEDING NOTICE

I just wanted to update everyone who responded to the call for volunteers to operate speed detection equipment around the village and Eagle Moor.

\* Firstly a big thank you to all of you who volunteered.

\* Secondly there were not enough people who came forward to make it a viable initiative. The Parish Council has to be mindful of cost and can not purchase equipment that could not be fully utilised.

\* Thirdly the Parish Council is looking at other traffic calming options that do not involve anyone standing outside and aiming a camera! Options have been investigated and they are on December's agenda.

So, the issue is still being discussed and you will be informed of the outcome of those discussions.

Once again thank you.

Councillor Jane Fulton-Sutton

The Parish Council also wanted to re-publish the findings from the last traffic survey done in January 2018:

**Thorpe Lane** - daily flow 678 vehicles, average speed **33mph**  
( previous survey in June 2012 average speed 35.3mph)

**Lincoln Road** - daily flow 2074 vehicles, average speed **29.8mph** (no previous data to compare to) any higher speed were from vehicles coming into village not out bound

**Scarle Lane** - daily flow 1658 vehicles average speed **29.8mph**  
(previous survey in Nov 2011 average speed was 37.5mph)

**High Street** - daily flow 532 vehicles average speed **24.9mph**  
(previous survey showed similar speed 24.6mph)

There were 3 collisions up to Dec 2017, only 1 deemed to be caused by speeding.



**Powell Legal Consultancy**

Providing solutions, cutting costs

## Wills and Powers of Attorney



Local personal service  
Competitive fees  
Legally qualified Will Writer (LLB Dip LP)  
FSWW

Free home visits

Call: 01522 306326/0778 658  
5728

Email:

[liz@powelllegalconsultancy.co.uk](mailto:liz@powelllegalconsultancy.co.uk)

[www.powelllegalconsultancy.co.uk](http://www.powelllegalconsultancy.co.uk)

Member of Society of Will Writers –  
Fully Insured



## On The Level Joinery

Stephen Atkinson

07957187443

[Ontheleveljoinery81@gmail.com](mailto:Ontheleveljoinery81@gmail.com)

Free friendly quote

All joinery work

Kitchens.

Doors .skirtings. stud walls.

Flooring. Stairs/balustrades

Fencing. Decking



## Taylor Tree Services

Gary Taylor  
N.D.A

All aspects of tree and  
hedge work  
Undertaken  
NPTC Qualified

Fully Insured

Domestic and Commercial

24 Fosse Lane  
Thorpe On The Hill  
Lincoln LN6 9BE

Mobile: 07845720099  
tel: 01522 685690  
[gary.taylor.10@gmail.com](mailto:gary.taylor.10@gmail.com)



**BRITESHINE**  
CLEANING SERVICES  
DOMESTIC | COMMERCIAL | INDUSTRIAL

- Window cleaning
- Gutter cleaning
- Conservatory cleaning
- Fascias and soffits
- Builders cleans
- Patio and driveway cleaning
- End of tenancy cleaning
- Oven cleaning
- Carpet cleaning
- Contract cleaning
- Warehouse cleaning

Call or email for your free no-obligation quote  
Mob: 07762 244810 • Email:



## The Boiler Man

shhh...  
save it!



**Have your  
boiler regularly  
serviced and  
save money**

**Evening Tel: 01 522 789840  
Mobile Tel: 07946 11 4955**

**Mark Wood Heating Ltd.  
Oil Boiler Specialist  
Servicing - Installation - Repairs**

**OFTEC REGISTERED**  
Full Central Heating Systems  
Boiler Replacements  
System Additions & Upgrades  
**Radiators - Pumps - Controls**  
Unvented Hot Water Systems  
Power Flushing.

**01427 628004 / 07703 217875**

## Useful phone numbers, email addresses and websites

### NEIGHBOURHOOD POLICING

**Sgt Kenneth Whyte** your Community Beat Sergeant, North Hykeham Police  
[kenneth.whyte@lincs.pnn.police.uk](mailto:kenneth.whyte@lincs.pnn.police.uk)

Hykeham Rural Villages Email : EMAIL: [hykehamrural.npt@lincs.pnn.police.uk](mailto:hykehamrural.npt@lincs.pnn.police.uk)

Facebook : <https://www.facebook.com/HykehamPolice>

@HykehamNPT

Community Beat manager PC Mark Wood 07973 846976

PCSO Sarah Lingard 07973 842 364

### **Report Potholes 01522 782070**

<http://www.lincolnshire.gov.uk/faultreporting> 01522 782070

Report Litter 01529 414155

Adult Concern 01522 782151

Report fly tipping

<https://www.n-kesteven.gov.uk/residents/waste-recycling-and-environment/report-or-request-a-waste-service/>

### **Non urgent police and medical**

Health 111 Police 101

### **Transport and Travel**

Call Connect 0845 234 33 44 or 01522 553143

8.30am - 7pm Weekdays and to 5pm Saturdays

Dial a ride 01522 544983 Disabled door to door

Car-sharing [www.lincshare.co.uk](http://www.lincshare.co.uk)

Trains [www.thetrainline.com](http://www.thetrainline.com)

### **Roadworks**

[roadworks@lincolnshire.gov.uk](mailto:roadworks@lincolnshire.gov.uk)

To receive info on twitter #lincscs\_roads

Report **illegal parking** 01522 511142 or email

[ParkingServices@lincolnshire.gov.uk](mailto:ParkingServices@lincolnshire.gov.uk)

Parish Council website [www.eaglevillage.co.uk](http://www.eaglevillage.co.uk)

# **Information from Lincolnshire County Council :** **Highways contact details and useful information**

## ***A few things we don't deal with:***

We look after the majority of issues within the highway but there are some that we don't:

### **Foul sewers and water leaks**

Anglian Water                      [www.anglianwater.co.uk](http://www.anglianwater.co.uk)

Severn Trent Water              [www.stwater.co.uk](http://www.stwater.co.uk)

### **Mud on the Road**

Lincolnshire Police **Call 101**

### **Street name plates, dog fouling, litter, street cleansing and fly tipping on the Highway**

City of Lincoln Council              [www.lincoln.gov.uk](http://www.lincoln.gov.uk)

Boston Borough Council              [www.boston.gov.uk](http://www.boston.gov.uk)

East Lindsey District Council      [www.e-lindsey.gov.uk](http://www.e-lindsey.gov.uk)

North Kesteven District Council    [www.n-kesteven.gov.uk](http://www.n-kesteven.gov.uk)

South Kesteven District Council    [www.southkesteven.gov.uk](http://www.southkesteven.gov.uk)

South Holland District Council      [www.sholland.gov.uk](http://www.sholland.gov.uk)

West Lindsey District Council      [www.west-lindsey.gov.uk](http://www.west-lindsey.gov.uk)

### **To report a fault**

A fault is something wrong with the highway network that requires fixing.

Typical examples are potholes, street lights that are not working and broken or missing drain covers. The best way to report a fault is to log it on the web portal

at [www.lincolnshire.gov.uk/faultreporting](http://www.lincolnshire.gov.uk/faultreporting)

### **To enquire about highways services**

Typical examples include when will the road improvements in my area be carried out.

There is lots of useful information on our web pages at [www.lincolnshire.gov.uk/transport-and-roads](http://www.lincolnshire.gov.uk/transport-and-roads)

If you can't find what you are looking for or the enquiry is about something very specific please email us at

[cschighways@lincolnshire.gov.uk](mailto:cschighways@lincolnshire.gov.uk)

### **Keep up to date with roadworks**

Visit [www.roadworks.org](http://www.roadworks.org) to find up to date information about all roadworks carried out by Lincolnshire County Council and utilities such as Anglian Water.

### **To talk to us**

Our Customer Service Centre number is 01522 782070

Our Service Centre Advisors can help with a wide range of questions and can look up what action has been taken with reported faults and enquiries between 08:00-8:00 Monday to Friday.

If you have a highway emergency outside of these times please call Lincolnshire Police on 101

### **Learn more about services we provide**

To find information on all our services for example grass cutting, street lighting, grit bins, patching and surface dressing visit

[www.lincolnshire.gov.uk/transport-androads/highways-maintenance/](http://www.lincolnshire.gov.uk/transport-androads/highways-maintenance/)

You can also view our programme of works for the current financial year and download our publications and policies.

### **Follow us on Twitter**

You can follow us on Twitter. We regularly tweet roadworks updates, incident details and in the winter when we are gritting.

[@LincsCC\\_roads](https://twitter.com/LincsCC_roads)

**WILKINS**  
ESTABLISHED 1895  
**CHIMNEY SWEEP®**

- 🦃 TRADITIONAL BRUSH AND VACUUM SERVICE
- 🦃 NESTS REMOVED
- 🦃 CAGES, CAPS AND COWLS FITTED
- 🦃 SWEEPING CERTIFICATES ISSUED
- 🦃 PROFESSIONAL, CLEAN SERVICE
- 🦃 FULLY INSURED
- 🦃 POLICE CHECKED

**01636 616425**

[wilkinschimneysweep.co.uk/newark](http://wilkinschimneysweep.co.uk/newark) 



**Mobile Camper Care**

The workshop that comes to you

For a hassle free service by a workshop that comes to you



@MobileCamperCare

Professional, local mobile workshop, caring for your Motorhome, Caravan or Camper at your home, in storage or on-site.

\* or if you're thinking of buying a van we also offer Pre-Purchase Inspection allowing you to buy with confidence.

Telephone (01522) 716920    Mobile (07864) 630767

Email [mobilecampercare@gmail.com](mailto:mobilecampercare@gmail.com)



London Park of Motor Vehicle Care Engineers Association Ltd



**MICK TAYLOR**



***MOTOR ENGINEER***

***Established 1982***

***PROMPT AND RELIABLE SERVICING ON ALL MAKES OF CAR***

**LAWNMOWERS SERVICED, SHARPENED AND REPAIRED**

**FLEET SERVICING**

**MOT PREPARATION**

**WELDING**

**EXHAUSTS**

**BRAKES**

**LIGHT COMMERCIALS AND DIESELS COLLECTION POSSIBLE**

**Mobile: 07958 123534**

**After Hours: 01522 685690**

LAND ROVER VW PEUGEOT MERCEDES DAEWOO  
 AUDI HONDA MAZDA FIAT RENAULT VOLVO  
 BMW CITREON MITSUBISHI FORD  
 SEAT TOYOTA VAUXHALL NISSAN

**MID Lincs**  
 Diagnostic, MOT & Repair Centre

**Car MOT £29.95**

**MOT Repairs Servicing** Cars, Taxis, Vans Minibuses, Motor Homes

**Opening Times**  
 Mon-Fri 8am-6pm, Sat 8am-13.30pm  
 Closed Sundays & Bank Holidays

**01522 697400**

# call CONNECT

CALL. CLICK. CONNECT

## YOUR FLEXIBLE BUS SERVICE

### Free to Register

Simply call us or go online to receive your membership number. It's that easy.

### Book Your Journey

Give your membership number and journey details to our booking agent and we'll do the rest. You can also request your journey online 24 hrs a day.

### Hop on the CallConnect Bus

Pay your fare, show your saver ticket or concessionary bus pass and enjoy the journey!

**0345 234 3344 - LINCOLNSHIRE**

**0345 263 8153 - STAMFORD AREA**

**LINCSBUS.INFO**



Service operates:  
Monday - Friday 7am - 7pm  
Saturday 7:30am - 6:30pm

Lincolnshire  
LOCAL GOVERNMENT  
*Working for a better future*



Monday to Saturday

Lincoln Bus Station, Stand N	06:40	09:00	11:00	13:00	15:00	17:00
Lincoln Debenhams	06:44	09:03	11:03	13:03	15:03	17:03
Lincoln, Valentine Retail Park	06:46	09:06	11:06	13:06	15:06	17:06
North Hykeham, Asda Layby	06:52	09:20	11:20	13:20	15:20	17:20
North Hykeham Station Cross roads	06:55	09:22	11:22	13:22	15:22	17:22
North Hykeham Pennells	06:58	09:25	11:25	13:25	15:25	17:25
Thorpe on the Hill, Post Office	07:02	09:30	11:30	13:30	15:30	17:30
Whisby, Thorpe Rd	07:06	09:34	-	13:34	-	17:34
Eagle Moor, Telephone box	07:09	09:36	-	13:36	-	17:36
Eagle, Primary School	07:11	09:38	-	13:38	-	17:38
North Scarle, Eyres Lane	07:17	09:43	-	13:43	-	17:43
Swinderby, Railway Station	07:22	09:48	-	13:48	-	17:48
Swinderby, The Plough	07:25	09:53	-	13:53	-	17:53
Witham St Hughs, Greenfinch Cres	07:35	10:03	11:43	14:03	15:43	18:03
Witham St Hughs, Juniper Way	07:38	-	-	-	-	-
Witham St Hughs, Juniper Way	07:40	-	-	-	-	-
Witham St Hughs, Greenfinch Cres	07:44	10:03	11:43	14:03	15:43	18:03
Swinderby, The Plough	-	-	11:52	-	15:52	-
Swinderby, Railway Station	-	-	11:57	-	15:57	-
North Scarle, High Street	-	-	12:02	-	16:02	-
Eagle, Primary School	-	-	12:07	-	16:07	-
Eagle Moor, Telephone box	-	-	12:09	-	16:09	-
Whisby, Thorpe Rd	-	-	12:11	-	16:11	-
Thorpe on the Hill, Post Office	07:50	10:15	12:15	14:15	16:15	18:15
Pennells	07:57	10:19	12:19	14:19	16:19	18:19
North Hykeham Station Cross roads	08:00	10:22	12:22	14:22	16:22	18:22
North Hykeham, Asda layby	08:03	10:25	12:25	14:25	16:25	18:25
Lincoln, Valentine Retail Park	08:23	10:39	12:39	14:39	16:39	18:39
Lincoln Bus Station, Stand N	08:35	10:50	12:50	14:50	15:50	18:50

**NOTICE FROM LINCOLNSHIRE HIGHWAYS DEPT:**  
**REPORTING HIGHWAYS ISSUES**

All highways issues should be reported via [www.lincolnshire.gov.uk/faultreporting](http://www.lincolnshire.gov.uk/faultreporting). The online system is the quickest and easiest way to report problems and is available 24/7.

However, you can also raise matters via customer services (by calling 01522 782070 or emailing [cschighways@lincolnshire.gov.uk](mailto:cschighways@lincolnshire.gov.uk) ) or by contacting your local county councillor.

While we realise that you may prefer to speak to the local highways officer directly, we need them out dealing with highways issues not in the office on the phone. For more complex, ongoing issues, you can request an annual meeting with your local member and the highways team.

In addition, my support councillor, Cllr Perraton-Williams, and I are currently committed to visiting each parish and town council with the local highways team.

I can assure you that all issues reported will be dealt with.

Kind regards CLLR RICHARD DAVIES

EXECUTIVE COUNCILLOR FOR HIGHWAYS, TRANSPORT AND IT

# LJM

HOMECARE  
LINCOLN

You can't help getting older,  
but you don't have to get old.



We take the time to get to know you and  
understand your needs.

- ✓ COVID-19 Framework
- ✓ Client Satisfaction
- ✓ Affordability
- ✓ Experience
- ✓ Reliability
- ✓ Quality

[info@ljmcare.com](mailto:info@ljmcare.com)

01522 700400

[www.ljmcare.com](http://www.ljmcare.com)

## TIGERTECH



**ICT SOLUTIONS**

Computer/tech gadget support  
delivered directly to your own  
home or small business

- Computer and mobile device  
maintenance and repairs
- Virus and spyware removal
- Data recovery
- Data backup
- PC health check / tune-up
- IT buying advice
- New and used PC sales
- On-site and remote support

Please contact Geoff Jones

T: 07305 729808

E: [support@tigertech-ict.solutions](mailto:support@tigertech-ict.solutions)



## CHRISTMAS AT DODDINGTON



**CHRISTMAS TREES**  
OPEN DAILY FROM 21 NOV  
9AM-5PM / SUN 10AM-4PM



**GIFT SHOPPING**  
PERFECT GIFT IDEAS FOR  
FRIENDS & FAMILY



**CHRISTMAS IN THE HALL**  
OPEN 3-23 DEC  
BOOKING ESSENTIAL

EXPLORE • EAT • SHOP • STAY

**DODDINGTONHALL.COM**

01522 694308 • info@doddingtonhall.com • Lincoln LN6 4RU

# Old Chandlery Apartments

***Do you have friends or relatives visiting?  
Not enough bedrooms or sofa-space?  
We can solve your problem...***

-----  
We offer a bed and breakfast solution combined  
with the luxury of a small serviced apartment.

Visitors can relax and cater for themselves  
(Continental / English breakfast ingredients included)  
in a quiet, rural setting - plenty of off-road parking.

Please call Jane on **01522 868123** for  
details, prices and information.

-----  
Old Chandlery Apartments, Morton, Swinderby.  
jane@ocapartments.co.uk www.ocapartments.co.uk

# FRIENDS OF EAGLE SCHOOL NEWSLETTER



## November 2020

Hello from FOES! What a great half-term for fundraising, despite all the challenges! FOES are so pleased with the support and enthusiasm for our recent events, and we hope you and your children have really enjoyed taking part! We have much more to come for December, with planning well underway!



### EAGLE VILLAGE SCARECROW TRAIL

The Scarecrow Trail has been a huge success, and we thank each and every one of you for taking part, getting out and about on the day and having a great time with your families! The baked treats were delicious, and everyone was kind and considerate making their way around the village to keep us all safe. Thank you to Rev Vaughan for completing the trail and for judging all the entries. Each Scarecrow was brilliant, and our winning Scarecrow was Moana! Well done to Emily in Class 4 for her hard work and creative design!



Pumpkin Competition WINNERS 2020

Well done to those who completed their Quiz Sheets too, our winning sheet entry was from Luke in Class 4 and we hope our prize winners enjoyed their treats which were sent home last week. Overall this term we have raised over £600 to add to our bank account. A huge thank you to all who have volunteered or given up their time to make this possible.

### PUMPKIN COMPETITION WINNERS!

Our Pumpkin entrants were also fantastic! Congratulations to our Little Eagle's winner Freddie (2), for

his Silliest Pumpkin, Louie in Class 1 and Charlie in Class 2 (1) for their joint entry which took the title of Spookiest Pumpkin, Brady in Class 3 for the most original idea (4), and Isla in Class 4 for the most creative design (3)! Well done to all who took part!



**BAG2SCHOOL - THURSDAY 10th DECEMBER** Have a good old clear out and start putting to one side those donations to help add that little extra to our charity pot. As, last time, we will be encouraging members of our wider community to also take part. Please tell your relatives and friends in the village that donations can be placed in any bags, as long as they are strong enough to hold the contents and protect them somewhat from the weather whilst awaiting collection. Please also remember that we can't accept uniform items with a logo on! They must be placed outside school in the carpark before 9am on collection day as long as the weather is fine. If it is wet, please take them to the brown door next to Little Eagles/Reception.

### 12 DAYS OF CHRISTMAS

We are getting ready for that time of year! Our raffle tickets have arrived and they will be making their way to you soon. We have some lovely prizes up for grabs, and although we can't plan our usual Christmas Fayre this year, nothing will stop us holding our traditional raffle! The draw will take place on the 14th of December. Please let your friends, relatives, and community know that they can still support our School by purchasing a few tickets! All pupils will receive Raffle Tickets in their book bags during November. Tickets are also available for £1 each from the Post Office.



December is usually the time where we are all getting excited to send Classes 1-4 on their annual visit to the Christmas Pantomime, which FOES has funded for many years. We are very sad that this year has been very different and we have not been able to make the usual arrangements...however, we do have some lovely craft activities and special treats in the pipeline to make this Christmas a memorable one! Do look out for details coming soon for our '12 Days of Christmas' event which will take place over the last few weeks of term, and involve a different Christmas themed craft or activity each day. Remember to get signed up with PTA Events to make sure you don't miss all the information, and can easily register your child for the activities when the event goes live! If you haven't received the details on how to sign your children up, drop us an email or visit [www.pta-events.co.uk/friendsofeagleschool](http://www.pta-events.co.uk/friendsofeagleschool)



Given the further recent restrictions and Government guidance, Committee meetings are unfortunately on-hold again, however, you can contact us on Facebook (Friends of Eagle School - FOES) or drop us an email at [foeseagle@gmail.com](mailto:foeseagle@gmail.com) with any ideas, suggestions, or questions!

Keep safe and stay well,  
Friends of Eagle School (FOES) Committee

All proceeds to benefit children at Eagle CP School & Little Eagles Pre-school  
Registered Charity Number 1032247

# Your local trusted Independent Mortgage Advisor

Established in Lincoln for  
nearly 30 years, specialising in

- MORTGAGES
- PERSONAL PROTECTION
- REMORTGAGES
- PROPERTY INSURANCE
- BUY TO LET
- EQUITY RELEASES

Call today and arrange a meeting in our  
office in the Bailgate or at your home



FINANCIAL SERVICES

10 Gordon Road  
Bailgate  
Lincoln LN1 3AJ

**01522 511177**

SW Financial Services are authorised and regulated by the Financial Conduct Authority.  
Your home may be repossessed if you do not keep up with your mortgage repayments.

## EAGLE EYES PAINTING AND DECORATING SERVICES

Female painter and decorator.

All aspects of inside painting and decorating undertaken.

Also outside - including fence panels, sheds, garage doors etc.

Competitive prices.

Over 25 years experience.

For more information and a free quotation  
please contact - Vicky Aldous 07799467189

## *Michael Waterton*

*Cavendish, 12 Church Lane, Eagle LN6 9DJ*

*Tel 01522 869876*

### *Mick the Stitch,*

a Saville Row-trained tailor, now working from home is able to undertake all types of alterations.

✂ Suits

✂ Top Coats

✂ New Zips

✂ Wedding and Bridesmaid dresses, boys' waistcoats



✂ Jackets, Trousers, Vests

✂ Leather and Motorbike gear

✂ School Uniforms

✂ Mother of the Bride outfits



# EAGLE & SWINETHORPE PARISH COUNCIL

Two sets of minutes have been agreed since the last edition of the Eagle Eye for the 25<sup>th</sup> August & 29<sup>th</sup> September 2020. A full copy of the minutes can be found on the Parish Council website. [www.eaglevillage.co.uk](http://www.eaglevillage.co.uk)

*(Lincolnshire County Council are currently updating the website, if you are having problems accessing our site. The new website should be back up and running by the new year).*

The parish clerk can be contacted either by email at – [parishclerk@eaglevillage.co.uk](mailto:parishclerk@eaglevillage.co.uk) or by phone – 01522 868936

The dates for the next parish council meetings are –

Tuesday 1<sup>st</sup> December 2020      Tuesday 12<sup>th</sup> January 2021

Parish Council meetings are currently being held via MS Teams. Please contact the parish clerk should you wish to attend; a meeting invite will then be issued.

The Parish Council still has one vacancy, if you are interested in becoming a Parish Councillor or would like some more information please contact The Clerk or any of the Parish Councillors.

## Planning

The Parish Council submitted 'No Comment' to the following planning applications.

**Demolition of existing ground floor sun room, WC & utility area at rear of property & erection of two storey rear extension.** 16 Scarle Lane, Eagle. Ref 20/0996/HOUS

**Application to vary condition 13.** Prestons Farm, Eagle Hall. Ref 20/0974/VARCON

The Parish Council supported the following application

**Proposed Tree Works**, Eagle Nursing Home. Ref – 20/1032/TPO



## Playing Field.

Remedial works for the BMX track have been carried out.

CCTV has been installed at the Playing Field, the gates to the carpark will remain open until further notice.

New, more permanent signs were put up at the park with the updated government guidelines. Re Covid-19.

## Policies

The following policies were reviewed/adopted –

- Risk Management Policy
- CCTV Policy
- Communications Policy
- Social Media Policy
- Freedom of Information Publication Scheme

## General Information

The Parish Council received the Small Business Grant & Retail, Hospitality & leisure Grant of £10,000.



If you or anyone you know need advice or support, the COVID-19 helpline number is 01522 782189.

You can also use this number if you would like any type of advice and support related to Covid.

Rachel Poplewell

Parish Clerk



## Time for School?

If your child will be starting their school Reception year (aged 4, turning 5) from September 2021, applications need to be in to the Local Authority by Friday 15<sup>th</sup> January 2021 and you can start applying now through the Local Authority Website



If you have a child aged two or above, you may be interested to know that they can join **Little Eagles Pre-School** which is housed within the school setting offering both 15hrs and 30hrs funded provision, as well as non-funded provision and additional hours. Also, the children have the opportunity in the term

in which they turn four to take up a Pre-Reception place in school, but still within our Foundation Stage Department for the mornings. If you require any details, wish to secure a place or be added to our waiting list, please do not hesitate to get in touch.

Finally, if you are moving to the area or nearby and looking for a new school, why not consider joining Eagle CP School where Ofsted recognize that we place “pupils at the heart of all the work we do”. This is a very important recognition as we value our “family ethos” and the positive relationships we create. We believe that is important to see our school running as it does on any day, so for us, **‘every day is an open day’**, simply give us a call (01522 868354) and arrange a visit. But if you are interested and would like to speak to someone during a school break, all messages will be received via [enquiries@eagle.lincs.sch.uk](mailto:enquiries@eagle.lincs.sch.uk).



*Hayley Adams*

*Head Teacher*

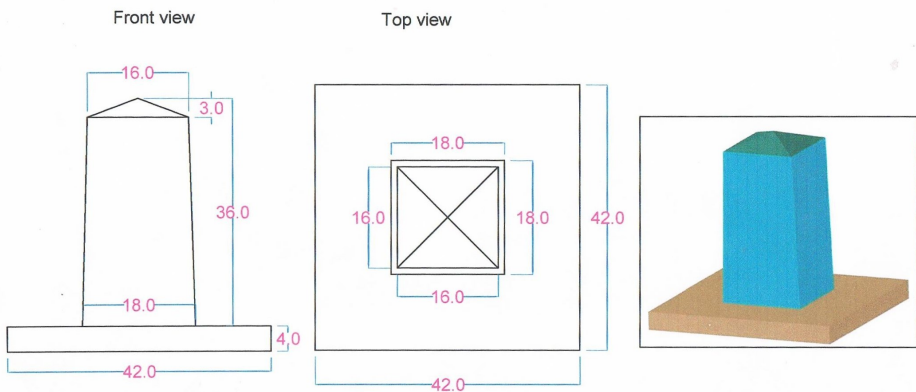
## Memorial Update

We are still waiting for the official go-ahead from the diocese to place the memorial to our four airman who were killed in the village in 1942 in the village churchyard. Their plane crashed in the centre of the village after taking off from Wigsley airfield and developing engine problems.

The public notice has been on the church door for the four week period ending on the 12<sup>th</sup> November there were no objections received so the application for the faculty has now gone to London where it has to be approved by the Chancellor of the Lincoln diocesan registry who will then issue the faculty which is a legal document stating we can place the memorial in the churchyard.

The drawings we submitted to the diocese are included below. It will be good to move on to the next step of our project and we hope that by early next year we will be in a position to order the memorial and have it placed in the churchyard. We plan to hold a dedication day later in the year when the current restrictions come to a end.

Glenda Spacey



Description:-  
Headstone  
Base

36" x 18" x 18" at bottom - tapering to 16" x 16" at top with a 3" high 4-way pyramid top  
4" x 42" x 42"



## **The Devastation**

The devastation of the first months of the First World War turned the Flanders landscape into a wasteland of churned up soil, fields and streams.

## **The Hope**

However sometimes the sights and sounds of nature could be heard and seen through the fog of battle. Soldiers spoke of how birds, most particularly the lark, could be heard twittering high in the sky during the fury of an artillery bombardment.

## **The Warmth**

The spring of 1915 was the first time that warm weather began to warm up the countryside after the cold winter of war 1914-1915.

In the region around Ypres in Belgium Flanders, the months of April and May were unusually warm.

One of the plants that began to grow in clusters on or around the battlefields was the red poppy.

## **In Flanders Fields**

The sight of these flowers caught the attention of a Canadian Soldier by the name of John McCrae. He is believed to have written this poem after the death of a friend at that time.

## **In Flanders Fields**

In Flanders fields the poppies blow,  
Between the crosses row on row,  
That mark our place, and in the sky  
The larks, still bravely singing fly  
Scarce heard amid the guns below

We are the dead. Short days ago  
We lived, felt dawn, saw sunset glow,  
Loved and were loved, and now we lie in Flanders Fields.

Take up our quarrel with the foe,  
To you from failing hands we throw  
The torch, be yours to hold it high.  
If ye break faith with us who die  
We shall not sleep, though poppies grow in Flanders fields.

## **Keep the faith**

An American teacher Miss Moina Belle Michael had read the poem and was greatly impressed, particularly by the last verse.

Moina made a personal pledge to “keep the faith”. She vowed always to

wear a red poppy of Flanders fields, as a sign of remembrance. It would become an emblem for “keeping the faith with all who died”

Moina wrote a poem of her own entitled “We shall keep the Faith” in November 1918 as a reply to John McCrae’s in Flanders Fields.

### **We shall keep the Faith**

Oh! You who sleep in Flanders Fields,  
Sleep sweet – to rise anew!  
We caught the torch you threw  
And holding high, we keep the faith  
With all who died.

We cherish too, the poppy red  
That grows on fields where valour led;  
It seems to signal to the skies  
That blood of heroes never dies,  
But lends a lustre to the red  
Of the flower that blooms above the dead  
In Flanders Fields.

And now the Torch and Poppy Red  
We wear in honour of the dead.  
Fear not that ye have died for naught,  
We’ll teach the lesson that ye wrought  
In Flanders Fields.

### **The Red Poppy**

On November 9<sup>th</sup> 1918, Miss Michael was presented with some money from the war secretaries of the YMCA, for whom she worked. She told them about the two poems and said she was going to buy 25 red poppies. She wore one herself and each secretary bought one from her.

The French secretary had a useful idea that the poppies should be made and sold to help the wounded and ex servicemen. The French secretary went in person to see Field Marshall Earl Douglas Haig, founder and president of the British Legion. She persuaded him to adopt the Flanders poppy as an emblem for the Legion. As a result the first ever poppy day was held in Britain in 1921.

### **Remembrance Sunday**

The First World War came to an end in November 1918 when an Armistice was declared. At 11am on November the 11th the last shot was fired.

Now Armistice Day is known as Remembrance Sunday and is held always on the second Sunday in November.

Glenda Spacey



**MARK PHILLIPS**  
MOTORCYCLE CLOTHING

Newark Road, Lincoln LN5 9EJ

**01522 684 662**

ENTERING OUR 17<sup>TH</sup> YEAR OF BUSINESS

SHOP ONLINE AT

[WWW.MARKPHILLIPS-MOTORCYCLECLOTHING.CO.UK](http://WWW.MARKPHILLIPS-MOTORCYCLECLOTHING.CO.UK)

SOME OF THE BEST PRICES AROUND FOR ALL STYLES OF  
RIDER:  
TOURING, SPORTS, COMMUTING, LADIES AND GENTS.  
WAX COTTON, TEXTILE AND LEATHER.

PRICES TO SUIT ALL

HELMETS FROM £39.99 - £589.99

JACKETS FROM £24.99 - £499.99

PANTS FROM £49.99 - £379.99

BOOTS FROM £49.99 - £379.99

ACCESSORIES – UNDER GLOVES £4.99

BALACLAVA £4.99

ITALIAN SOCKS £9.99

COME AND SEE US!



# Little bot bots

## child minding



Ofsted registered childminder, offering a home from home day-care service in Eagle with spaces available now.

Please ring or email Victoria to discuss requirements or to arrange a visit.

Tel: 07789 010452

Email: [Victoria@littlebotbots.co.uk](mailto:Victoria@littlebotbots.co.uk)

Address: Eagle, Lincolnshire

# Scouts



27th Lincoln  
Thorpe-on-the-Hill

Providing Scouting for ages 5 – 18  
years old

Join our next great adventure.....

For meeting times and enquiries  
contact:

Fran Firth  
Group Scout Leader

[Fran27lincoln.gsl@gmail.com](mailto:Fran27lincoln.gsl@gmail.com)

Or call 07952 480708



Swinderby  
Pre-School



A local, friendly Pre-School playgroup run by dedicated, qualified and experienced staff. Ofsted registered & inspected, providing quality care & education to children aged 2 to 5 years (government funding available for those eligible).

Opening times (term time only):

**Monday 8am - 3.05**

**Tuesday 8am - 3.05**

**Wednesday 8am - 3.05**

**Thursday 8am - 3.05**

**Friday - CLOSED**

*This includes breakfast club 8am-9am and early drop off 8.30am-9am subject to minimum numbers.*

For more information, and to see what we can offer your child, please contact us on **01522 869362** or email [swinderbyppg@googlemail.com](mailto:swinderbyppg@googlemail.com)





**SING DANCE ACT**  
Come and join in the fun!!

Saturdays 10am-12.30pm  
at  
Swinderby Village Hall

Musical Theatre classes taught by friendly  
qualified teachers

**BALLET TAP JAZZ**

Classes on Tuesdays from 4pm  
at  
Swinderby Village Hall  
Ages 3-18

For more information please call:  
Danielle – 01522 696100  
or Carol – 01522 791898  
Visit – [www.dancelincoln.co.uk](http://www.dancelincoln.co.uk)



**Mobile Hairdresser**

Fully qualified  
Based near Swinderby  
Also with home salon

**Reasonable rates!**

For Ladies & Gents

From a trim to highlights  
Call Julie on

**07970 699 204**



**Hair by Julie**

**Mobile hairdressing**



**Over 20 years' experience**

**Contact home on 01522 681137**

**mobile on 07958307000,**

**email [julielynn974@gmail.com](mailto:julielynn974@gmail.com)**

**Hair By Angela**

*Your Local  
Mobile Hairdresser*

*N.V.Q. qualified ladies & gents hairdresser  
offering competitive rates and quality  
service in your own home*

*Whatever you need from a trim to a perm  
Call Angela - she's the girl !*

*Angela Martin  
35 Station Road  
Thorpe-on-the-Hill  
01522 684825  
07949671917*



*Body and Sole*

*The Country Clinic with the Calming Air*

\*\*\*\*\*

Are you feeling stressed? Do you find it hard to switch off? Are you struggling to sleep?



Either a Therapeutic *NO HANDS*® massage or a Reflexology session may be able to help.

Call Sally Smith on the number below or visit [www.sallysmith.co.uk](http://www.sallysmith.co.uk) to find out more

\*\*\*\*\*

*“My feet are killing me”*

**If this sounds like you then call to book your appointment NOW!**

**Pain-free feet are just a phone call away. Most foot problems can be treated quickly and easily, there’s no need to suffer in silence.**

\*\*\*\*\*

*Sally Smith*

Chiropodist, Reflexologist, *NO HANDS*® massage Therapist

Body and Sole, Lime Grove Clinic, High St, Harby, Newark, Notts NG23 7EB

01522 704294 or 07974 580 262

**INDEPENDENT FAMILY  
OPTICIAN  
FRIENDLY PROFESSIONAL  
EYECARE**

**j:d  
opticians**

**17/19, Appletongate,  
Newark**

- Private and NHS Work
- Eye Examinations available 6 days a week
- Childrens Eyecare
- Home visits available for the housebound
- Contact lens service
- Same day repair service
- On site glazing for most prescriptions
- Large range of frame styles on display
- Expert advice always available

**01636 611133**  
(opposite the Palace Theatre)



PETE COWAN

DpT ADI / Fleet  
Driver Trainer

RoSPA Diploma in  
Advanced Driving  
Instruction



**Beginners,  
Theory, Advanced,  
Defensive & Corporate  
Training**

Tel: (01522) 778266  
Mob: 07885 106284

Chestnut House, Wigsley Road,  
North Scarle, Lincoln. LN6 9HD  
e-mail: [pete@a1drivertraining.co.uk](mailto:pete@a1drivertraining.co.uk)

# THE STRUGGLER INN

AT 42 HIGH STREET

*"Your local, family pub"*

OPEN WEEKDAYS FROM 4PM  
SATURDAY FROM 2PM  
SUNDAY FROM 12PM

TEL: 01522 861873

EMAIL: [DONNA@THESTRUGGLERINN.COM](mailto:DONNA@THESTRUGGLERINN.COM) | [WWW.FACEBOOK.COM/THESTRUGGLER](http://WWW.FACEBOOK.COM/THESTRUGGLER)



Full Grooms, Clipping, De-Shedding,  
 Wash & Blow Dry, Nail Trimming,  
 Parasite Removal,  
 Puppy Introductory Sessions,  
 Pick Up & Drop Off Service and so much  
 more!

Full Grooms starting at £35

Wash & Blow Dry starting at £20

Contact us today to book your appointment  
 or more information!

( 01636 626411 ( 07568 990991

: [www.thomasdoggrooming.com](http://www.thomasdoggrooming.com)

Lucas Court, Fenton, Newark, NG23 5DE



Wet or Dry Grooms, Clipping, De-  
 Shedding, Claw Clipping, Kitten Introductory  
 Sessions, Pick Up & Drop Off Service and so  
 much more!

Grooms starting at £45

*Thomas' Professional Cat Grooming is  
 the feline department of Thomas'*

*Professional Dog Grooming*

Contact us today to book your appointment  
 or more information!

( 01636 626411 ( 07568 990991

: [www.thomasdoggrooming.com](http://www.thomasdoggrooming.com)

Lucas Court, Fenton, Newark, NG23 5DE

# Folly Farm Cattery

Opening times:

Mon - Fri:

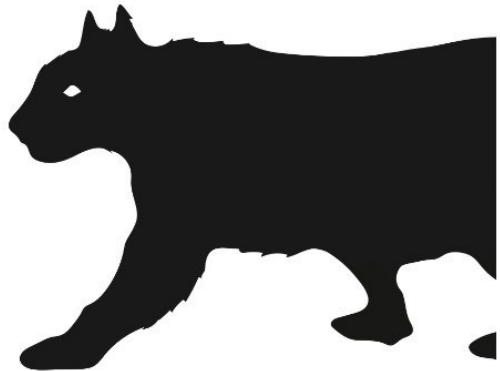
9am - 11am | 4pm - 6pm

Saturday:

9.30am - 12.30pm

Sunday & Bank Holidays

9.30am - 12pm



Folly Farm, South Scarle, Newark NG23 7JR

Call 01636 892042 or email [follyfarmcattery@gmail.com](mailto:follyfarmcattery@gmail.com)



# COLLINGHAM PHARMACY



**YOUR** local pharmacy dispensing NHS, Private and Veterinary prescriptions.  
Offering a wide range of medicines, vitamins, toiletries, pet medicines and seasonal gifts.

**NHS Services Include:**

- ✓ **Medicine Use Review**
- ✓ **Morning After Pill**
- ✓ **Blood Pressure Measurement**
- ✓ **Minor Ailments Scheme**

High Street, Collingham, Newark, NG23 7LB    Tel: 01636 893038  
 email: [collingham.pharmacy@nhs.net](mailto:collingham.pharmacy@nhs.net)  
 Mon 8.45am-6.30pm Tue-Fri 8.45-6pm Sat 9am-12.30pm Closed 1pm-2pm daily

**EAGLE VILLAGE SHOP & POST OFFICE**

Now stocking local produce & offering an ordering service for:

- \* Meat / Pies from the Lakeside Butcher
- \* Fresh bread and pastries from Davisons Bakery & The Welbeck Bakehouse
- \* Fresh fruit & vegetables from Mark Cheetham
- \* Locally made cards, gifts, honey, chocolate, flowers, alcohol and much more!

**Post Office services including:**    Free cash withdrawals & deposits / pay cheques in / euros

By supporting your local shop you are supporting other local businesses too!  
#lovelocal

**Opening Hours:**

Monday, Tuesday, Thursday & Friday	8:30am – 5.30pm (Post Office 9am – 5.30pm)
Wednesday	8.30am – 1pm (Post Office 9am – 1pm)
Saturday	8:00 am – 1pm (Post Office 9am – 1pm)
Sunday	Closed

# TIGER HIRE

www.tigerhireuk.com  
TEL 01522 869641



Marquees & Party Tents  
Framed / Traditional  
50 - 350

Catering Equipment

Bouncy Castles & Slides  
Children / Adults / Fetes etc

Portable Toilets  
suitable for  
Parties &  
Construction site use

Corporate or  
Private Functions

## D&S ALARMS Ltd

*"Looking after Lincolnshire"*



DOMESTIC  
ALARMS AND  
CCTV

- SUPPLY
- INSTALL
- REPAIR
- MAINTAIN

For any enquires please  
contact:

07729261027  
dsalarmsltd@icloud.com

Based in  
Sturton By Stow



## EAGLE VILLAGE HALL - HIRE CHARGES

1st December 2019

### VILLAGE RESIDENTS

Sunday to Thursday £8.00 per hour

### NON-RESIDENTS

Sunday to Thursday £10.00 per hour



### VILLAGE RESIDENTS

Fridays & Saturdays - Daytime up to 6pm £8.00 per hour

Evenings £13.00 per hour

### NON-RESIDENTS

Fridays & Saturdays – Daytime up to 6pm £10.00 per hour

Evenings £13.00 per hour

(a £100 refundable deposit is required for evening bookings)



### FURNITURE HIRE – Residents only (per day)

Large Tables £2.00 each, Small Tables £1.50 each, Chairs £1.00 each

**THIS SERVICE IS NOT AVAILABLE FOR THE MOMENT DUE TO COVID-19 RESTRICTIONS**



Set-up Time (before 6pm) – Charged at day rates

Minimum booking period 1 hour - Bookings must be for the total time the hall is in use. (Please include preparation & clear up time.)

Eagle Village Hall are LICENSED PREMISES for the consumption of Alcohol. The Village Hall Committee is the licensee of these premises and you will need permission from the committee to sell or supply alcohol, our licence regulations must be observed & costs may apply.

Please contact us for details.

**EAGLE VILLAGE HALL will be reopening in a limited capacity from Monday 5 October, following government Covid-19 secure guidelines. Please contact booking secretary for details: Jackie Jinks 01522 868418**

# THE EAGLE EYE

Editor Jane Wallis, 15 Church Lane, Eagle LN6 9DJ  
01522 869094 janewallis41@btinternet.com

Treasurer Anne Rogers, 4 Church Lane, Eagle, LN6 9DJ  
01522 869996  
anne.horsman@outlook.com

Distribution Mike Waterton 01522 869876

## Advertising Rates (6 issues)

Full Page	£90
Half page	£50
Quarter page	£30
One-off advertisements	Full page £20, Half page £14, Quarter page £10
Family announcements	Free
Diary entries	Free

**Publication date** 1st week in February, April, June, August, October, December

*The views expressed in the magazine represent those of the individual contributors and not necessarily those of the Editor. Readers are advised to take their own precautions before entering into any agreement with advertisers to obtain goods or services.*

## Village Facebook Pages

**‘Eagle Local Information and What’s On in our Village’** - for posting information re events in the village, weekly groups/ clubs, useful numbers, suspicious activity etc.

**‘Eagle Sales and Wants’** For those looking to sell or gift items and others who are looking for that specific something.

**‘Eagle & Swinethorpe Parish Council’** for notices from the Parish Council



## USEFUL TELEPHONE NUMBERS

Collingham Medical Centre	General Enquiries	01636 892156
Collingham Pharmacy		01636 893038
Community Beat Team	See inside	Page 6
Eagle Bowls Club	Ted Coulson	704340
Eagle Indoor Bowls	Roger Bishop	869557
Eagle Post Office		868212
Eagle Primary School		868354
Eagle Churchwardens	Sue and Chris Stiles	869296
OAP Party Fund	Roy Bell	868567
Parish Clerk	Rachel Popplewell	Parishclerk@eaglevillage.co.uk
District Councillor NKDC	Cllr Sally Appleby*	07714 271450
Playing Field Committee	Parishclerk@eaglevillage.co.uk	
Village Hall Bookings	Jackie Jinks	868418
Village Hall Committee	Simon Spear	869490
Village Produce Ass'n	Clare Evans	07825 160985
Village Website		www.eaglevillage.co.uk
200 Club	Rodney Fagg	869123
Fellowship Lunch	Jean Roberts	868797

\*Cllr Appleby's email address is [cllr\\_sally\\_appleby@n-kesteven.gov.uk](mailto:cllr_sally_appleby@n-kesteven.gov.uk)

If you would like your telephone number added to this list or any of the above are incorrect please contact the Editor on 869094 or [janelwallis41@btinternet.com](mailto:janelwallis41@btinternet.com)

### EAGLE & SWINETHORPE NEIGHBOURHOOD WATCH CO-ORDINATORS

<b>Jon Faiers</b> , Fallowfields, Doddington Road, Whisby	694352
<b>Sue Ross</b> , 7 Kestrel Rise, Eagle	868411

Publisher accepts no responsibility for the validity of any of the advertisements.  
Printed by Pott Morton Printers, Lincoln